



Corticon Installation

Copyright

© 2021 Progress Software Corporation and/or its subsidiaries or affiliates. All rights reserved.

These materials and all Progress® software products are copyrighted and all rights are reserved by Progress Software Corporation. The information in these materials is subject to change without notice, and Progress Software Corporation assumes no responsibility for any errors that may appear therein. The references in these materials to specific platforms supported are subject to change.

DataDirect Cloud, DataDirect Connect, DataDirect Connect64, DataDirect XML Converters, DataDirect XQuery, DataRPM, Defrag This, Deliver More Than Expected, DevReach (and design), Icenium, Inspec, Ipswitch, iMacros, Kendo UI, Kinvey, MessageWay, MOVEit, NativeChat, NativeScript, OpenEdge, Powered by Chef, Powered by Progress, Progress, Progress Software Developers Network, SequeLink, Sitefinity (and Design), Sitefinity, Sitefinity (and design), SpeedScript, Stylus Studio, Stylized Design (Arrow/3D Box logo), Styleized Design (C Chef logo), Stylized Design of Samurai, TeamPulse, Telerik, Telerik (and design), Test Studio, WebSpeed, WhatsConfigured, WhatsConnected, WhatsUp, and WS_FTP are registered trademarks of Progress Software Corporation or one of its affiliates or subsidiaries in the U.S. and/or other countries.

Analytics360, AppServer, BusinessEdge, Chef Automate, Chef Compliance, Chef Desktop, Chef Habitat, Chef WorkStation, Corticon.js, Corticon Rules, Data Access, DataDirect Autonomous REST Connector, DataDirect Spy, DevCraft, Fiddler, Fiddler Everywhere, FiddlerCap, FiddlerCore, FiddlerScript, Hybrid Data Pipeline, iMail, JustAssembly, JustDecompile, JustMock, KendoReact, NativeScript Sidekick, OpenAccess, PASOE, Pro2, ProDataSet, Progress Results, Progress Software, ProVision, PSE Pro, Push Jobs, SafeSpaceVR, Sitefinity Cloud, Sitefinity CMS, Sitefinity Digital Experience Cloud, Sitefinity Feather, Sitefinity Insight, Sitefinity Thunder, SmartBrowser, SmartComponent, SmartDataBrowser, SmartDataObjects, SmartDataView, SmartDialog, SmartFolder, SmartFrame, SmartObjects, SmartPanel, SmartQuery, SmartViewer, SmartWindow, Supermarket, SupportLink, Unite UX, and WebClient are trademarks or service marks of Progress Software Corporation and/or its subsidiaries or affiliates in the U.S. and other countries. Java is a registered trademark of Oracle and/or its affiliates. Any other marks contained herein may be trademarks of their respective owners.

Last updated with new content: Corticon 6.2

Updated: 2021/06/04

Table of Contents

Learn about Corticon installations.....	7
System requirements.....	8
Download Corticon installer packages.....	9
How to prepare for a Corticon installation.....	11
If you are evaluating Corticon.....	11
If you are upgrading Corticon.....	12
Procedures for upgrading Corticon installations.....	12
How to install Corticon Studio.....	17
Run the Corticon Studio installer wizard.....	18
Perform silent installations of Studio.....	22
How to install Corticon Studio plugins into an existing Eclipse.....	22
Increase Corticon Studio memory allocation.....	23
Set Studio to run in another language.....	24
How to install Corticon Servers and Web Console.....	27
Run the Server and Web Console installer wizard.....	28
Perform silent installations of Server components.....	32
Perform command-line Linux installations of Server components.....	33
How to set up Corticon .NET Server resources on an IIS server.....	33
How to uninstall Corticon components.....	35

Learn about Corticon installations

This guide presents procedures for accessing, downloading, and running Corticon installers, as well as providing dynamic access to information about [supported platforms](#). Links to the Progress Corticon KnowledgeBase provide additional information about third-party software setup.

Progress® Corticon® is the Business Rules Management System with the patented rules engine that enables you to automate sophisticated decision processes—without having to write code.

Progress Corticon products

Progress Corticon distinguishes its development toolsets from its server deployment environments.

- **Corticon Studio** is the Windows-based development environment for creating and testing business rules:
 - When installed as a standalone application, Corticon Studio provides a complete Eclipse development environment for Corticon in the **Corticon Designer** perspective. You can use this Eclipse installation as the basis for adding other Eclipse tools.
 - When installed into an appropriate existing Eclipse environment, Corticon integrates with installed Eclipse tools to enable you to develop Corticon applications in the **Corticon Designer** perspective.

Note: Refer to [How to install Corticon Studio plugins into an existing Eclipse](#) on page 22 for details about integrating Corticon Studio into an existing Eclipse environment.

- **Corticon Servers** implement and manage web services and in-process servers for deploying business rules defined in Corticon Studio:
 - **Corticon Server for Java** is supported on various application servers, and client web browsers. After you install it on a supported Windows platform, its deployment artifacts can be redeployed on various UNIX and Linux web service platforms as Corticon Decision Services.

- **Corticon Server for .NET** facilitates deployment of Corticon Decision Services on Windows .NET Framework and Microsoft Internet Information Services (IIS).
- **Corticon Web Console** enables administration of multiple remote Corticon Servers. A Web Console server is deployed into an application server, and then is accessed by users through authenticated web browser connections.

For details, see the following topics:

- [System requirements](#)
- [Download Corticon installer packages](#)

System requirements

Progress Corticon products are supported on a variety of platforms and third-party components.

Corticon Studio

Refer to the Progress Software web page [Corticon 6.2 - Supported Platforms Matrix](#) to review the currently supported Corticon Studio operating systems, and Eclipse versions.

The target system for a Corticon Studio installation requires:

- Supported Windows operating system
- 8 GB System RAM (minimum of 2 GB available RAM)
- 650 MB disk space
- When an existing Eclipse will be used, a supported Eclipse version

Corticon Server for Java

Refer to the Progress Software web page [Corticon 6.2 - Supported Platforms Matrix](#) to review the currently supported platforms and application servers. Also see the Corticon KnowledgeBase entry [Corticon Server 6.X sample WAR installation for different Application Servers](#) for detailed instructions on configuring Apache Tomcat, JBoss, WebSphere, WebLogic, and Wildfly on all supported platforms.

The target system for a Corticon Server for Java installation requires:

- Supported Windows or Linux operating system
- When deploying on other platforms, a supported operating system and application server
- 8 GB System RAM (minimum of 2 GB available RAM)
- 600 MB disk space

Corticon Server for .NET

Refer to the Progress Software web page [Corticon 6.2 - Supported Platforms Matrix](#) for information on supported .NET Framework and IIS versions, and the Corticon Knowledgebase article appropriate for your target IIS/platform, as listed in the topic [How to set up Corticon .NET Server resources on an IIS server](#) on page 33.

The target system for a Corticon Server for .NET installation requires:

- Supported Windows operating system
- Supported .NET Framework and Internet Information Service (IIS)
- 8 GB System RAM (minimum of 2 GB available RAM)
- 500 MB disk space

Corticon Web Console

Refer to the Progress Software web page [Corticon 6.2 - Supported Platforms Matrix](#) for information on supported browser versions.

The target system for a Corticon Web Console installation requires:

- Supported Windows or Linux operating system
- 4 GB System RAM (minimum of 2 GB available RAM)
- Java option for MaxPermSize set to at least 256m
- 600 MB disk space

Note: When all three Corticon Server components are installed on one machine, the required space for the installation is about 1 GB.

Download Corticon installer packages

The Corticon Studio installer package

For supported Windows machines: `PROGRESS_CORTICON_6.2.0_STUDIO_WIN_64.exe`

The Corticon Server and Web Console packages

Microsoft Windows

Corticon Server and Web Console 6.2 products for Windows -- Java Server, .NET Server, and Web Console -- are packaged in executable installer applications and ZIP archives.

For supported Windows machines, download: `PROGRESS_CORTICON_6.2.0_SERVER_WIN_64.exe`

Zip Archives

Corticon Server and Web Console .war files are available in a Corticon Server .zip archive. Use it to install the Web Console on a supported application server without using the executable installers.

Linux

Corticon Server and Web Console 6.2 products for Linux -- Java Server, and Web Console -- are packaged in executable installer applications for supported Linux machines:

`PROGRESS_CORTICON_6.2.0_SERVER_LNX_64.bin`

Perform downloads

To download required Corticon installers:

1. Get credentials to access and download packages on the Progress Software Electronic Software Download (ESD) site, .
2. [Connect to the ESD](#), log in, and then navigate to the Corticon 6.2 page.
3. Locate, download, and save the required installers to a temporary location accessible by the target machine.

How to prepare for a Corticon installation

Before running installers

To avoid possible constraints on the installers, do the following:

- **Confirm that you have Administrator permissions on the target machine** - Administrator rights allow the installer to copy all the Corticon files to their proper locations. You must have Administrator rights and permissions to install this software. See your system administrator to obtain these rights.
- **Obtain system access** - Several Corticon features write files to the “home” directory structure. If the target machine for the Corticon installation does not have read and write access to this directory, you need to choose a directory location where Corticon will have both read and write access.
- **Disable anti-virus, anti-malware, and anti-spyware protection applications** - Before performing the installation, consider temporarily disabling any anti-virus and anti-spyware software that may be running on the target machine, as such software might interfere with correct installation.
- **Review the supported platforms** - Refer to the Progress Software web page [Corticon 6.2 - Supported Platforms Matrix](#) to review the operating system versions for Corticon Server and Corticon Studio and supporting software.

For details, see the following topics:

- [If you are evaluating Corticon](#)
- [If you are upgrading Corticon](#)

If you are evaluating Corticon

You can install Studio and Server, start them, and then get underway. The licensing will sustain you for a while:

- **Studio Licensing** - Corticon embeds a ninety-day evaluation license that enables development of business rules projects, as well as testing of the projects in an embedded test server. You must obtain Studio development licenses from your Progress representative.
- **Server Licensing** - Corticon embeds a limited evaluation license that enables testing of rule modeling projects on all supported platform configurations except .NET. You must obtain server deployment licenses and .NET evaluation licenses from your Progress representative. The license included in the default Corticon Server installation has pre-set limits on certain Corticon Server and Decision Service parameters. These limits are:
 - **Number of Decision Services** – Up to 20 Decision Services may be deployed at any given time. This means the sum total of all Decision Services loaded via .cdd files, Web Console, or APIs cannot exceed 20.
 - **Number of Rules** – All rules in all deployed Ruleflows (that is, all deployed Decision Services) must not exceed 500. A rule generally consists of a single Condition/Action Column or a single Action row in Column 0. Filter expressions do not count because they only modify other rules.

Note: The Corticon Server log can capture errors and exceptions caused by expired or under-strength licenses. These log messages are detailed in the *Corticon Server logs section of the Server Guide*.

If you are Progress Corticon customer, you should have access to an unlimited license that will lift these restrictions. If you are an evaluator, and discover that these limitations are preventing or inhibiting your evaluation, contact your Progress Software representative to get a license with expanded capabilities. For information on installing an updated license in Studio or Server, see the related topics in [Procedures for upgrading Corticon installations](#) on page 12.

If you are upgrading Corticon

Existing Corticon users advancing to this release will want to know whether their existing products can co-exist with the newer version, as well as any strategies for perpetuating the assets created in their current version.

Read through the [Procedures for upgrading Corticon installations](#) on page 12 to plan your upgrade processes.

Procedures for upgrading Corticon installations

Stepping through tasks that optimize upgrades of Corticon Studios and Servers ensures that your files and assets are synchronized with the updated product. These tasks are a checklist of good practices.

If your upgrade was a minimal step forward, such as a patch (such as 5.6.0.11 > 5.6.0.12), you should read the patch notes to see if there are tasks to consider. For a Service Pack (such as 5.7.0 > 5.7.1), it is more likely that there are changes in the product that you should handle, even though they might not present problems. For a minor release -- especially a big step (such as 5.5.2 > 6.2.0) -- every one of these tasks should be reviewed, considered, and performed.

IMPORTANT: Corticon Studio and Corticon Server versions must be consistent throughout your infrastructure.

Note: Do **not** copy a .war or .ear file from an older version's installation to a new one.

In the order of action:

ON STUDIO MACHINES

- [Update Studio installations](#)
- [Update the Studio's brms.properties](#)
- [Update eclipse.ini and Java](#)
- [Update the Studio license file](#)
- [Upgrade assets](#)
- [Update desktop shortcut](#)
- [Repackage Decision Services and their Datasource Configuration file](#)

ON SERVER MACHINES

- [Undeploy the old Decision Services](#)
- [Update Corticon Server and Web Console software](#)
- [Update the Server license files](#)
- [Update the Server's brms.properties](#)
- [Clear browser caches that use the Web Console](#)
- [Deploy regenerated Decision Services](#)
- [Stop load balancers and start the new server](#)

ON STUDIO MACHINES

Install Studios

See [How to install Corticon Studio](#) on page 17

Update the Studio's brms.properties

Compare the `brms.properties` files that are currently in use. Any property adjustments you made in the past, if still valid, should be copied into the newer installation. While a minor release installs into a separate location, a service pack overlays an existing installation and does not touch an existing `brms.properties`.

On .NET servers, you can copy the `brms.properties` file from the Corticon server root, paste it adjacent to the `axis.war` in the IIS location, and thereafter apply updates to it.

Update eclipse.ini and Java

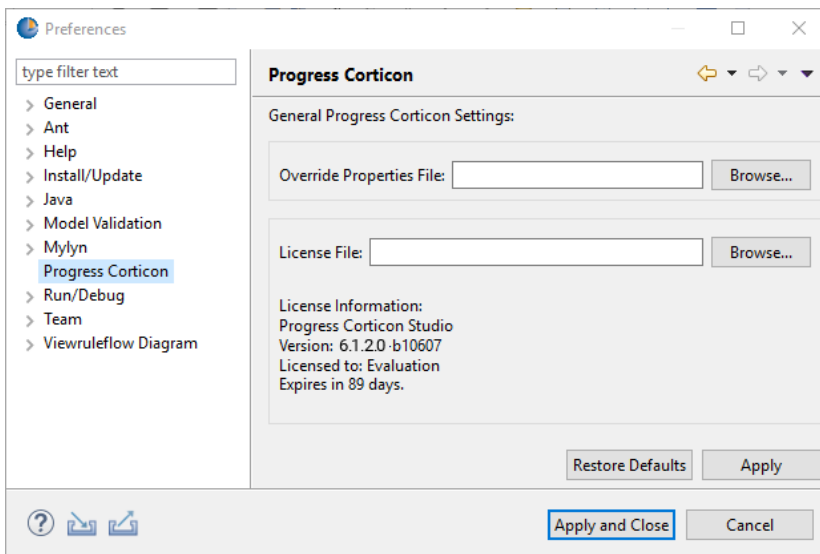
Some Studio installations benefit from tweaking the `eclipse.ini`, often for Studio *memory settings* section of the *Corticon Installation Guide*. If you are pointing to your preferred Java, it might not be optimal.

Update the Studio license file

A major release will likely require a new license file while minor releases typically do not. When you are provided a license for Corticon Studio and Server, you receive a JAR file, `CcLicense.jar`. Save the file on the target machine or at a location that is network-accessible to the installation. In this example, the license file that both Studio and Server will use is placed at `C:\licenses`.

To update a Studio license:

1. Select the menu command **Window > Preferences**.
2. Expand the **Progress Corticon** group. In the **License File** entry area, enter or browse to the location of the license JAR:



Click **Apply**, and then click **OK**.

Upgrade assets

In Studio, be sure to upgrade all project assets. While you could do this file by file or project by project, it is a good idea to advance all the assets you might work with in the current release. It is a good idea to run any Ruletest or unit tests to see that the behaviors are as expected.

Update desktop shortcut

Make changes to your desktop shortcut if you want your new Studio version to run in a different language.

Repackage Decision Services and their Datasource Configuration file

Use any of the several techniques in Studio to package projects as Decision Services, and then stage them for deployment on the new server installations together with a freshly generated Datasource Configuration file.

ON SERVER MACHINES

Undeploy old Decision Services

Undeploy every EDS on the target servers.

Install new Corticon Server and Web Console software

If you are using load balancers to carry the load during upgrade, take one of its peers offline, and stop it. Run the installers, and then start the new Server.

Note: Other application servers - The .war files can be downloaded in the `PROGRESS_CORTICON_6.2.0_SERVER.zip` package. The unpackaged files are typically installed in the Corticon directory `[CORTICON_HOME]\Server\Containers\WAR`. Refer to the Progress Software web page [Corticon 6.2 - Supported Platforms Matrix](#) to review the currently supported UNIX/Linux platforms and brands of application servers. Also see the Corticon KnowledgeBase entry [Corticon Server WAR installation for different Application Servers](#) for detailed instructions on configuring JBoss, WebSphere, WebLogic, and Wildfly on all supported platforms.

Update Server licenses

The Server requires you to copy the `CcLicense.jar` file, and then paste it to replace the existing file, as follows:

- **Java server license:**
 - `[CORTICON_HOME]\Server\lib\`The license used for Server tasks and operations.
 - `[CORTICON_HOME]\Server\tomcat\webapps\axis\WEB-INF\lib\`The license deployed to the runtime server. If you are managing a default Java server from the Web Console, you can perform this task through its *"Edit server groups and servers" in the Web Console Guide*.
 - When your installation is from the .war file for deployment onto other supported platforms and application servers, place the license file adjacent to the Corticon JARs.

- **.NET server license :**

Note: You must have a license issued to you that enables .NET server to work with Corticon. See [Knowledge Base article: Corticon 6 licensing](#)

- `[CORTICON_HOME]\Server .NET\ThirdParty\lib\`The license propagated to the IIS location by the install utility.
- The IIS location, typically: `C:\inetpub\wwwroot\axis\lib\`The license at the IIS location. If you are managing a .NET server from the Web Console, you can perform this task through its *"Edit server groups and servers" in the Web Console Guide*.

Update the Server's brms.properties

As with Studio, compare and update the `brms.properties` files on Java and .NET servers with consideration that many properties are effective only on servers.

Clear browser caches that use the Web Console

For administrators that use the Web Console, have them flush their browser caches.

For .NET servers:

- **Install to the IIS** - Run `install.bat` to refresh the IIS server's libraries and samples. Answer **Y** to all the overwrite choices. Then restart the IIS server.

Deploy the fresh Decision Services

Deploy the newly created Decision Services to the new server. When using CDDs, be aware that you might have two types of data access configuration files. The legacy format used a `.properties` file while new format is a `datasources.xml` file.

- Where you have a legacy `.properties` file with EDC, use CDD Property :

```
PROPERTY_DATABASE_ACCESS_PROPERTIES_PATH
```

- Where you are have a new style `.xml` file, use CDD Property :

```
PROPERTY_DATASOURCE_CONFIG_FILE_PATH
```

Stop load balancers and start the new server

Use Web Console (or other techniques) to deploy the upgraded EDS files and license to the new Server. Bring the other load balancers down, and then expose the upgraded server to carry the load. Uninstall old Servers, and then upgrade and provision to be peers.

How to install Corticon Studio

There are several techniques for installing Corticon Studio:

- [Run the Corticon Studio installer wizard](#) on page 18, the typical use, which enables a complete Corticon Studio Eclipse installation that can standalone, or be tailored into another Eclipse IDE on the same machine.
- [Perform silent installations of Studio](#) on page 22 that generates a file from an installer wizard run to let you perform silent Studio installations on other machines.
- [How to install Corticon Studio plugins into an existing Eclipse](#) on page 22 which enables scripted installation of Corticon Studio plugins into an existing Eclipse.

What Corticon Studio installers provide

The installer wizard package includes:

- Corticon Studio resources
- Eclipse Development Environment and Eclipse online documentation.
- Java Runtime Environment (JRE)
- Sample projects
- API documentation for extending Corticon
- Corticon Server runtime for use in testing rules you create in Corticon Studio

Installation options

A new Corticon Studio install lets you choose to install it standalone, or to add its plugins to an existing Eclipse 4.9 installation.

For details, see the following topics:

- [Run the Corticon Studio installer wizard](#)
- [Perform silent installations of Studio](#)
- [How to install Corticon Studio plugins into an existing Eclipse](#)
- [Increase Corticon Studio memory allocation](#)
- [Set Studio to run in another language](#)

Run the Corticon Studio installer wizard

The Studio installer will install or update Studio 6.2.

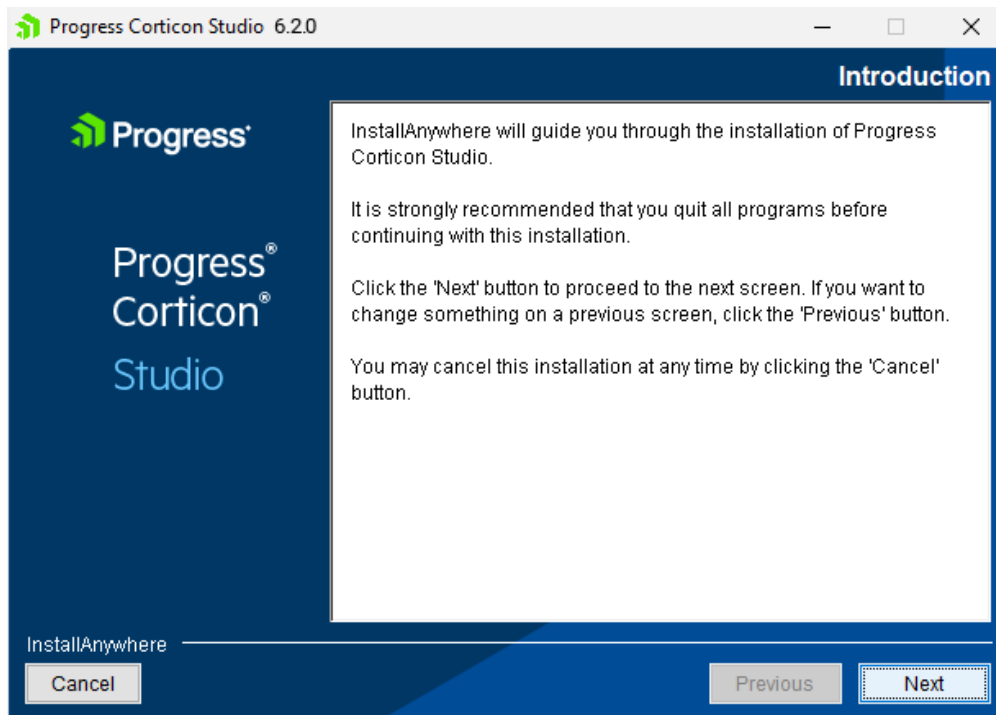
Installing or updating Studio 6.2

To perform an update installation of Corticon Studio 6.2.0:

1. Double click on the installer file, `PROGRESS_CORTICON_6.2.0_STUDIO_WIN_64.exe`, to launch the Corticon Studio installer.

The installer opens in the installer wizard.

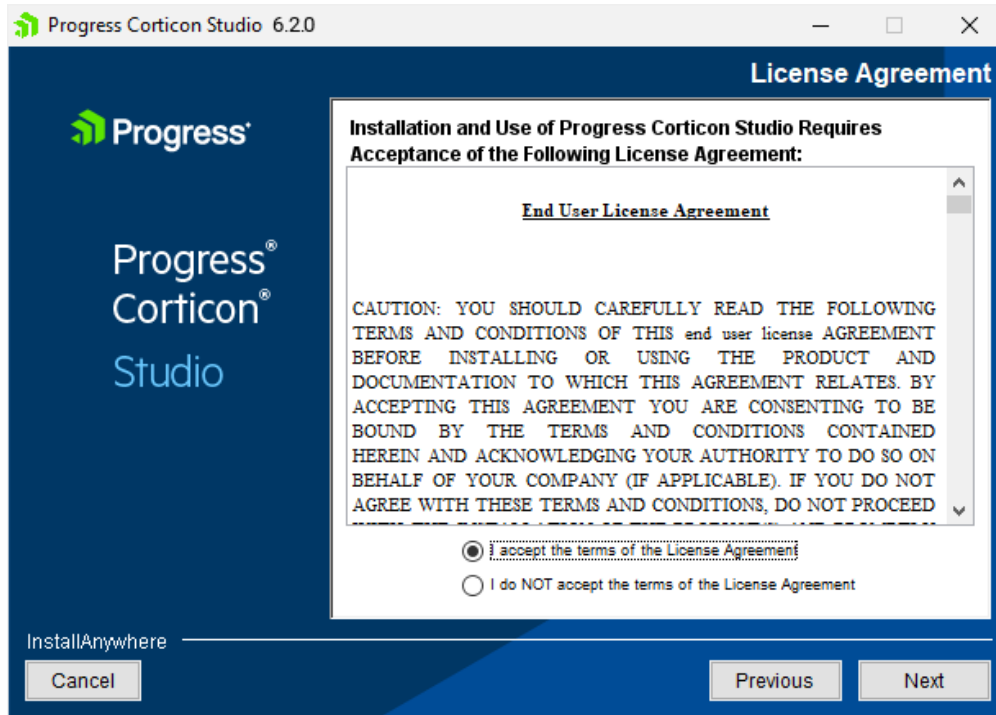
2. The first installer panel opens with information about the installer.



Note: If Corticon Studio 6.2 is installed at any location on the target machine, an alert is posted that denies permission to continue. You will be able to apply 6.2 Studio service packs and patches. You can have other versions of Corticon Studio installed in distinct folders and they can run concurrently, although they must keep their workspaces separate.

3. Click **Next** to continue.

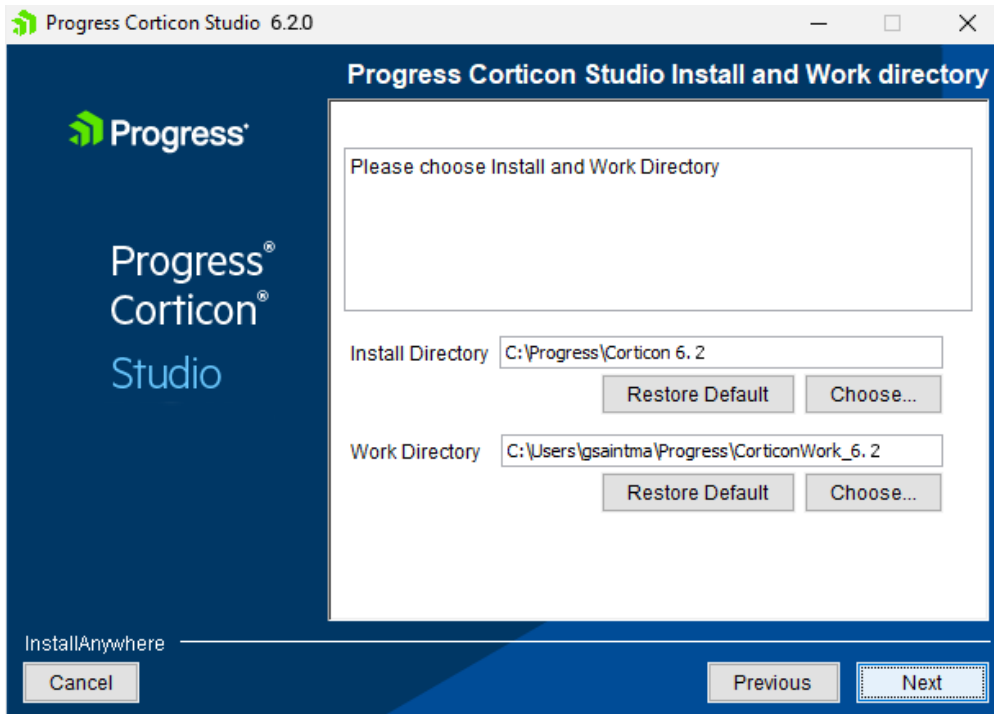
The **License Agreement** panel opens.



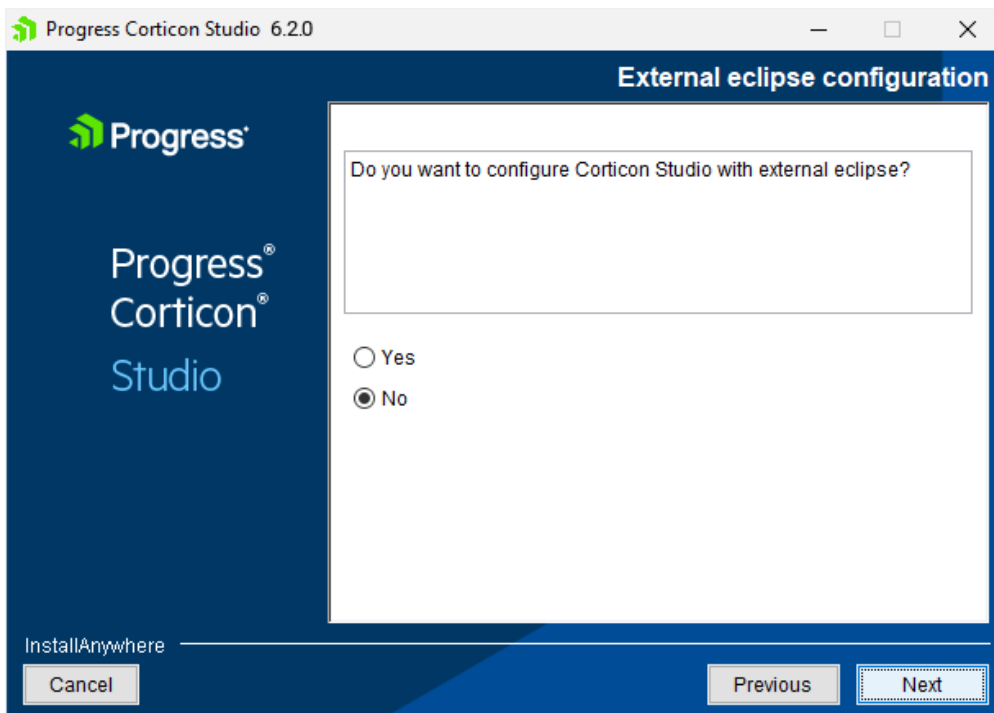
This panel displays the Progress Software End User License Agreement (EULA). Use the scroll bar at the right of the screen to read the agreement content.

4. When you understand and agree to the terms, choose **I accept the terms in the license agreement**, and then click **Next** to continue.

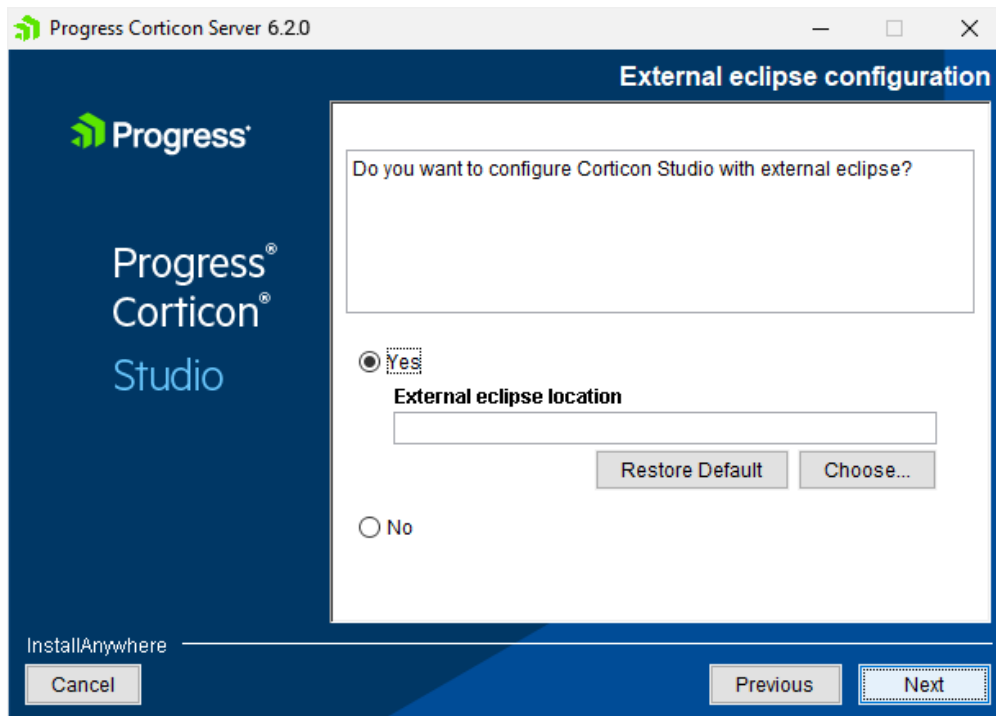
The **Choose Install Folder** panel opens.



5. Specify the installation location. The default location for the installation directory and the work directory are as shown above. (For the work directory, the default subdirectory under `Users` is the current username.) Either accept the default locations, or specify each preferred (and different) location.
6. Click **Next**.
7. The **External eclipse configuration** panel opens:



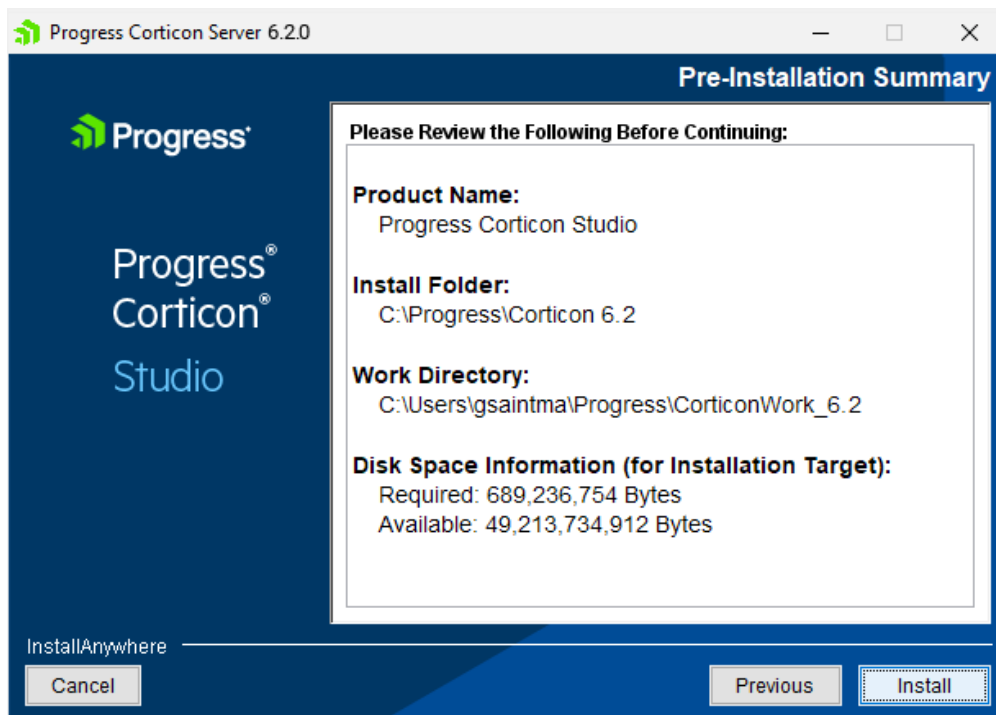
- If you select **Yes** on this panel, the entry area for the **External Eclipse location** in which you want to add Corticon Studio (in addition to a standard installation) is presented:



Enter or browse to the location of the existing Eclipse 4.9 64-bit installation.

- If you leave the selection as **No**, a normal installation will proceed.
When you have decided which path to take, click **Next** to continue.

8. The **Pre-installation Summary** panel opens.



Confirm that your installation location has adequate disk space for the Corticon Studio components as well as at least 100 MB of workspace.

9. Click **Install** to continue.

An installation status window opens to display the state of the installation process. When the process has finished, the **Install Complete** panel opens.

10. Click **Done** to quit and close the installer.

The installation or update of Corticon Studio 6.2.0 is complete.

Perform silent installations of Studio

An unattended (silent) install requires that you first run an installation or updater in the installer wizard to capture the selected options, and then use the captured response file on other targets to 'playback' the responses into the installer without any user interaction.

To perform silent installations for Corticon Studio:

1. Run the Studio installer with your preferred locations and options to capture a response file, using the syntax `installer.exe -r file` where *installer* is the preferred Studio installer, and *file* is the response file you will reuse. For example, `PROGRESS_CORTICON_6.2.0_STUDIO_WIN_64.exe -r C:\CorticonStudio64_620.responses`
2. On other target machines, access the Studio 6.2 installer executable and the response file.
3. On those machines, run the installer using the syntax `installer.exe -i silent -f file` where *installer* is the Studio installer, and *file* is your response file. For example, `PROGRESS_CORTICON_6.2.0_STUDIO_WIN_64.exe -i silent -f C:\CorticonStudio64_620.responses`.

How to install Corticon Studio plugins into an existing Eclipse

These instructions apply when you want to install Corticon functionality into an installed 64-bit Eclipse IDE.

1. A Java Software Development Kit (JDK) is required for Corticon, not just a Java Runtime Environment (JRE). If you do not have one installed locally, download and install a 1.8 or higher 64-bit version from the Oracle Java website <http://www.oracle.com/technetwork/java>

Note: For the installation of the Corticon Studio plugins, you can use the JRE that Eclipse is using. In Eclipse, choose **Window > Preferences**, then select **Java > Installed JREs**.

2. Download and perform a standard installation of Corticon Studio into a clean directory on the target machine. This installation will provide the script and the required files for the integration into your target Eclipse location.
3. In a Command Prompt window at the Corticon Studio's `[CORTICON_HOME]/Studio` location, check to see whether `JAVA_HOME` is set. If not, set `JAVA_HOME` to the JDK root. For example: `set JAVA_HOME=c:\jdk1.8.0_65`
4. Confirm that neither the installed Corticon Studio or the target Eclipse are running.

5. In the Command Prompt, run the integration script in the form:

```
integrateCorticon.bat -install eclipse_target
```

where *eclipse_target* is the root directory of the target Eclipse installation.

Eclipse installs its required plug-ins.

6. To ensure that Corticon Ruletests can locate `javac` to compile rules, add the path of the JDK to your `PATH` as the default Java to use. For example:

```
set PATH=%JAVA_HOME%\bin;%PATH%
```

7. Specify the Corticon work directory, the folder where you want Corticon to write its log and other temporary files. For example:

```
set CORTICON_WORK_DIR=c:\corticon_work_dir
```

8. When the script successfully completes, restart the Eclipse session, and then verify the installation by selecting the menu command **Help > About Eclipse**. Click **Installation Details** to confirm that **Progress Corticon Feature** is installed.
9. Open a project, and then run a Ruletest. A successful run indicates that the Java compiler is being accessed correctly.

The `integrateCorticon` script enables other functions:

```
COMMAND SYNTAX AND OTHER OPTIONS
=====
Usage: integrateCorticon [OPTION] [TARGET_ECLIPSE]
Manage installation of Corticon plugins in an Eclipse install
-install          Install Corticon plugins in TARGET_ECLIPSE
-uninstall        Uninstall Corticon plugins from TARGET_ECLIPSE
-update           Update Corticon plugins in TARGET_ECLIPSE
-updateParams     Update Corticon plugins parameters in TARGET_ECLIPSE
-help             Display this message
```

Increase Corticon Studio memory allocation

When working on large Rule Projects, you will get better performance by increasing the amount of memory available to Corticon Studio.

To change Corticon Studio memory allocation after installation, do the following:

1. Edit the command file `eclipse.ini` located at `[CORTICON_HOME]\Studio\eclipse`
2. Change (typically, increase) the `Xmx` value (maximum memory setting). The default `Xmx` setting is 2 gigabyte, specified as `Xmx2g`. Often, that is increased to 4g when appropriate memory is available.

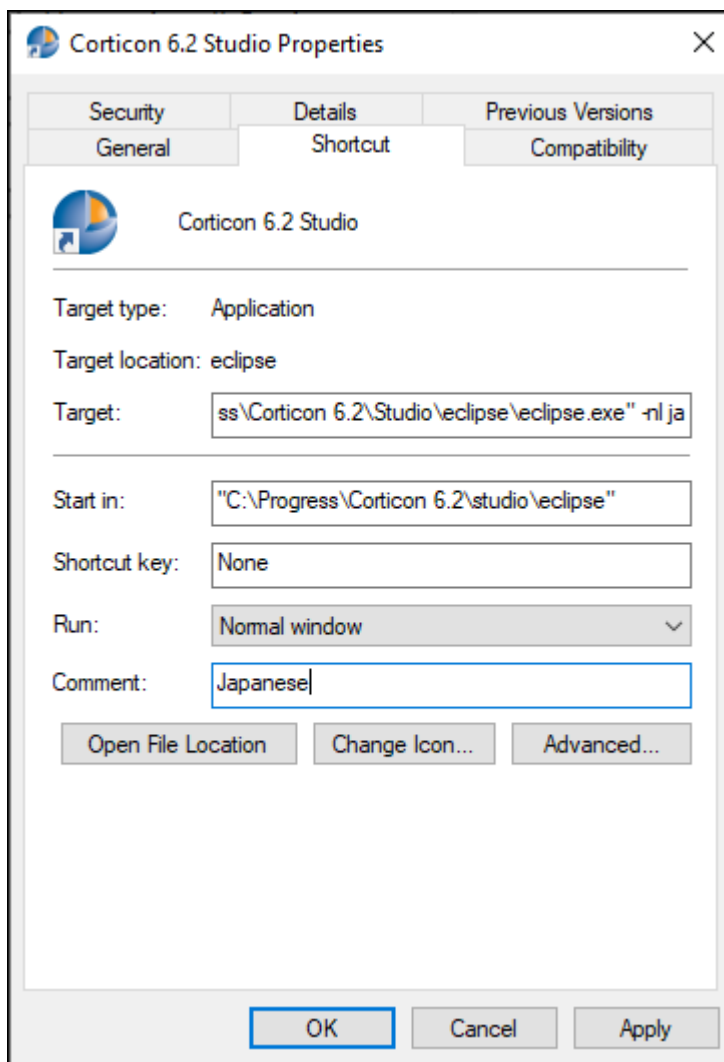
Set Studio to run in another language

You can specify a preferred language for Corticon Studio. The options are:

- English (en - default)
- French (fr)
- Japanese (ja)
- Portuguese (Brazilian) (pt_BR)
- Spanish (es)

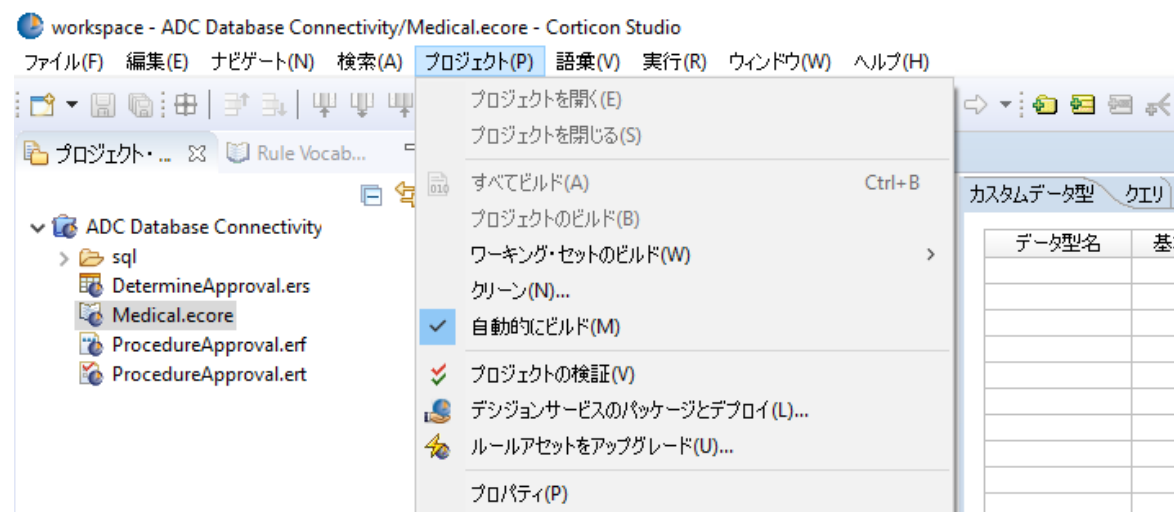
To set Corticon Studio to start in your preferred language:

1. On Windows 10, right-click on the **Start** menu item for **Corticon 6.2 Studio**, and then choose **More > Open file location**.
2. Right-click on the shortcut **Corticon 6.2 Studio**, and then choose **Properties**.
3. Choose the **Shortcut** tab, and then add to the **Target** value with the language option, `-nl` followed by a language value, as shown setting `ja` for Japanese:



4. Click **Apply**, and then **OK** to set the change.

When you start Corticon Studio its labels are in Japanese, as illustrated:



Note: A preferred user language might use different separator symbols than those documented for decimal values, list ranges, and dates.

How to install Corticon Servers and Web Console

This section provides information about the installation procedures for the deployment and administration components of Corticon Server as well as the web application server, Apache Tomcat, that is used by the Java Server and the Web Console.

Note: IMPORTANT: Default application server - Corticon Server and Web Console install a standard Tomcat distribution to help you quickly get started. This is a standard Tomcat distribution at the time of Corticon release. It may not have the latest security patches or other security configuration changes recommended for production use. When moving to production, it is recommended to deploy Corticon Server and Web Console to a supported application server that you have supplied and secured. If you choose to use the bundled Tomcat in production, you assume responsibility for applying Tomcat security patches and performing security configuration.

Note: Linux Installation - When you download and run the Linux server installer, you get shell (.sh) scripts for start/stop and utility tools that correspond to the batch (.bat) scripts in a Windows installation.

There are several techniques for installing Corticon Server components:

- [Run the Server and Web Console installer wizard](#) on page 28, the typical use, which enables a complete Corticon Server for Java, Corticon Server for .NET, and Corticon Web Console.
- [Perform silent installations of Server components](#) on page 32 that generates a file from an installer wizard run to let you perform silent installations of Server components on other Windows machines.
- [Perform command-line Linux installations of Server components](#) on page 33 enables the Linux installer to run from the shell as a command with parameters.
- **Performing a manual installation of Server components:** Corticon Server for Java and Web Console are available in zip archives. Use them to manually install Corticon WAR files into a supported application

server on any supported platform. For details about installing Corticon into specific application servers, see [Corticon Server 6.X sample WAR installation for different Application Servers](#) .

Considerations for Authentication

Confirm that servers that will host Corticon Server installations are enabled for authentication, and that Decision Service administrators have the credentials to deploy to those servers.

When you run the Corticon Server installer, the application server does not enable authentication by default. To do so, see *"How to set up authentication for secure Java server access" in the Web Services section.*

For details, see the following topics:

- [Run the Server and Web Console installer wizard](#)
- [Perform silent installations of Server components](#)
- [Perform command-line Linux installations of Server components](#)
- [How to set up Corticon .NET Server resources on an IIS server](#)

Run the Server and Web Console installer wizard

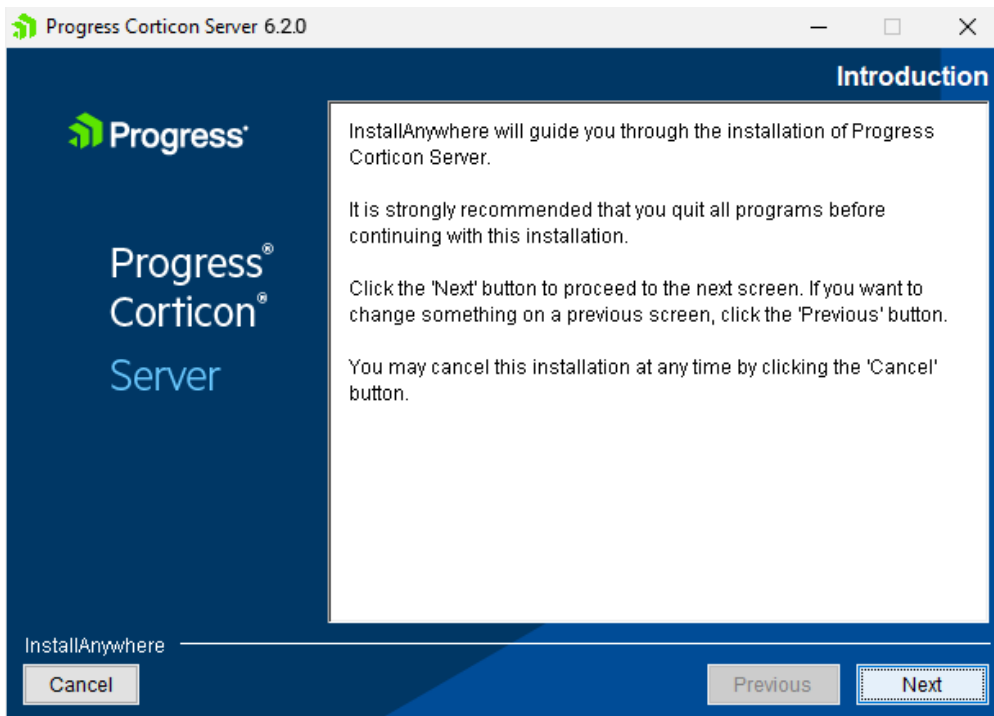
The Server installer will install or update Servers and Web Console 6.2.

Note: You can install Corticon Servers and the Web Console on a machine that has a previous version installed. Where a previous version is installed, you must manage any port overloads that might result from running both versions. However, an installed version of Corticon Server 5.2 or earlier on the target machine must be [uninstalled](#), then Corticon Server 6.2 installed. Consult with Progress Corticon Support or your Progress representative to consider your migration strategies for existing assets before you take action.

To create or update an installation of Corticon Servers (Java and .NET) and Web Console 6.2:

1. On the target machine, access the Corticon 6.2.0 installers you [downloaded](#).
2. To open the Progress Corticon Server Setup Wizard:
 - For Windows, double click on: `PROGRESS_CORTICON_6.2.0_SERVER_WIN_64.exe`
 - For Linux, run: `PROGRESS_CORTICON_6.2.0_SERVER_LNX_64.bin`

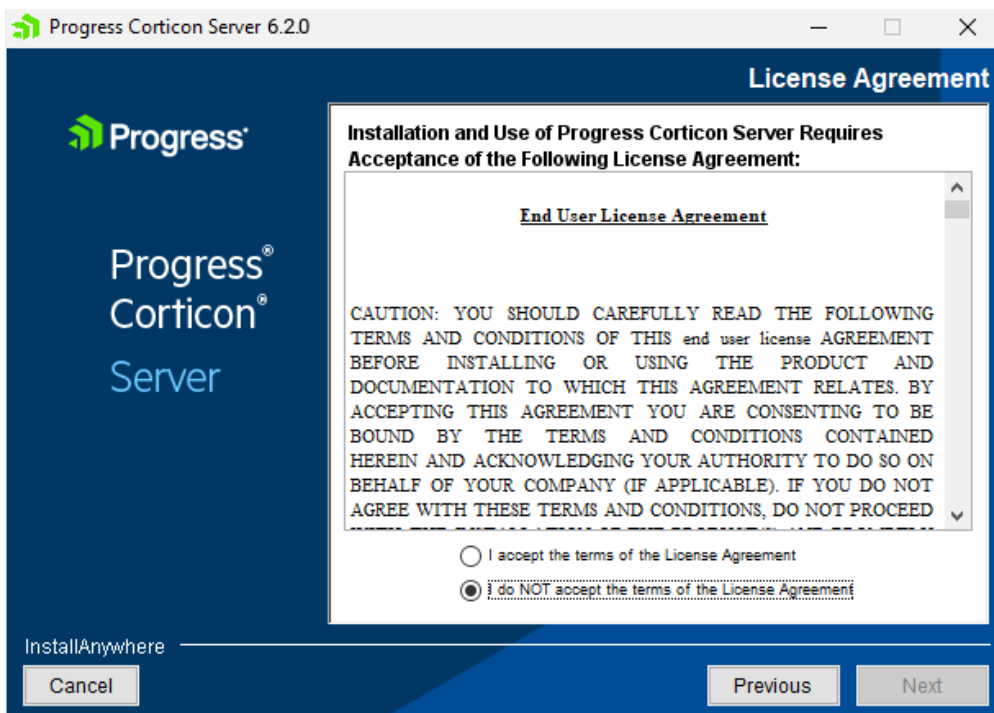
The installer opens in the installer wizard. The first installer panel opens with information about the installer.



Note: If Corticon Server 6.2 is installed at any location on the target machine, an alert is posted that denies permission to continue. You will be able to apply Server 6.2 service packs and patches. You can have other versions of Corticon Server installed in distinct folders and they can run concurrently, although they must run on separate ports.

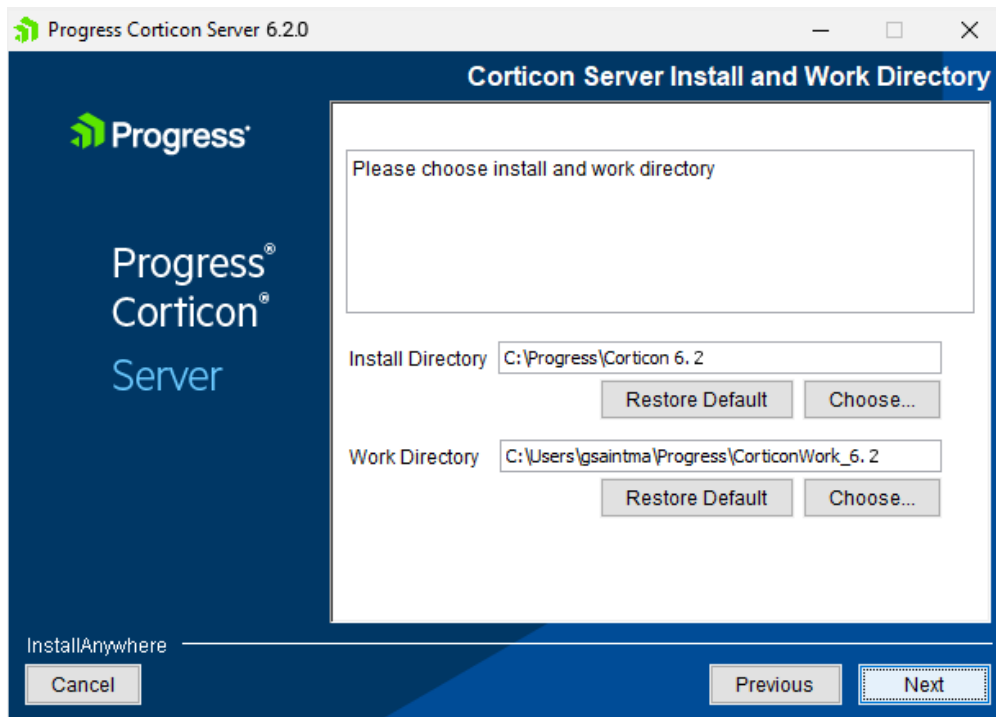
- Click **Next** to continue.

The **License Agreement** panel opens.



4. After you have read, understood, and agreed to the terms of the End User License Agreement, choose **I accept the terms of the license agreement**, and then click **Next**.

The **Choose Install Folder** panel opens.

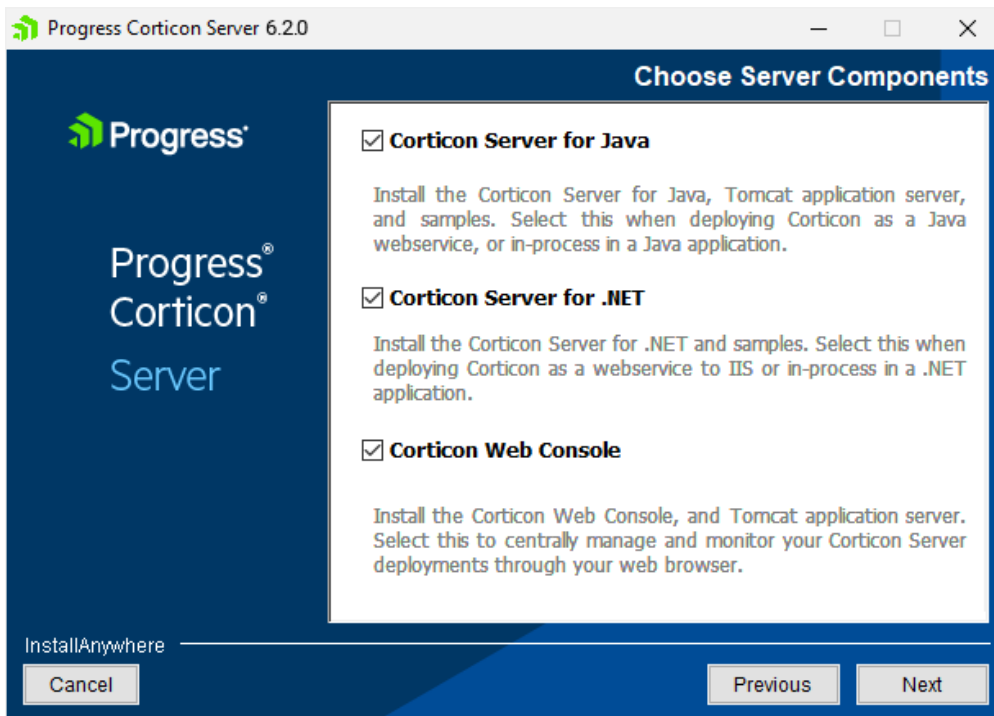


5. The default installation directories are shown. To specify preferred directories on each line, either enter the explicit path, or click **Choose** to browse to each preferred directory.

Note: For Linux installations, the work directory path must not contain spaces.

6. Click **Next**.

The **Choose Server Components** panel opens.

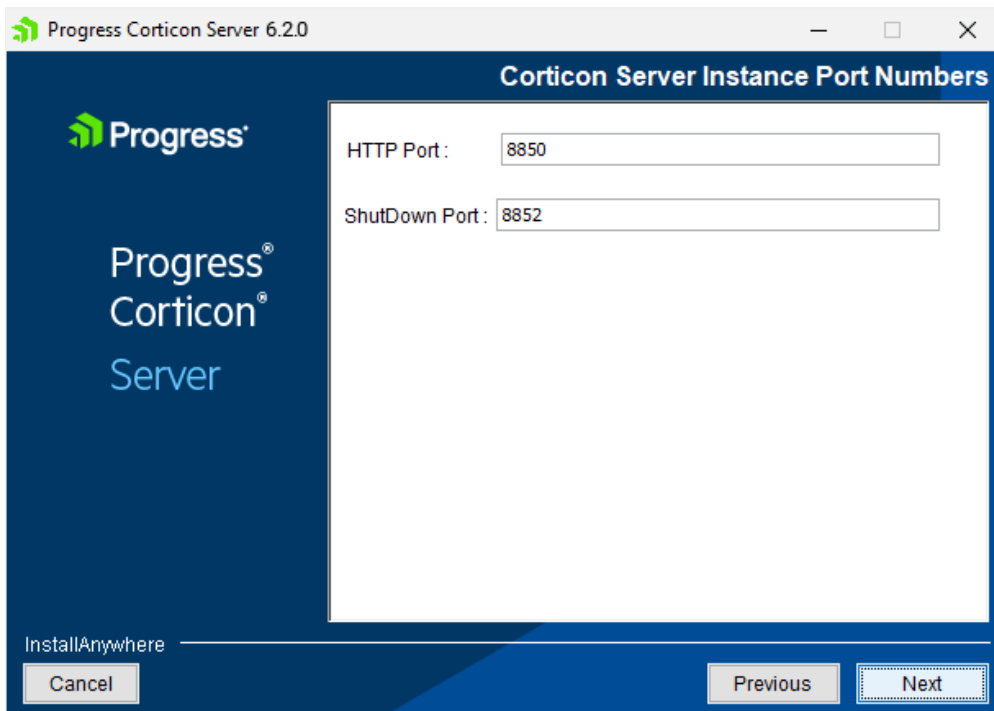


- Choose the one or more components you want to install at this time. Any components already installed are chosen and grayed out. If you choose Corticon Server for .NET as one of the components, see the topic [How to set up Corticon .NET Server resources on an IIS server](#) on page 33 for further instructions.

Note: The Linux installer does not enable a Corticon Server for .NET installation.

Click **Next**.

- If you selected the Java Server or Web Console, the **Corticon Port Numbers** panel opens.



9. If any of the preferred ports conflict with existing applications, you can change them at this time to an integer value from 1024 to 49151. Be aware that the documentation references these ports as though the default values, as shown, were accepted. Consult with your system administrator to identify alternate ports you might use, or to reset the ports on the conflicting applications.

Enter your preferred port numbers, and then click **Next**. The **Pre-Installation Summary** page opens.

10. Verify your selections in the **Pre-Installation Summary** panel. Nothing has happened yet so you can click **Previous** to go back to a panel to make changes, or click **Cancel** to quit this installation procedure.
11. Click **Install** to continue. The installation status window opens. When done, the **Install Complete** panel opens.
12. Click **Done** to complete the Corticon Server / Web Console installation and close the installer.

The installation and update of Corticon Servers and Web Console 6.2.0 is complete.

Note: Using an LDAP store for Web Console authentication - You can set up Corticon Web Console to authenticate users using an LDAP server. See the topic *"How to use LDAP for Web Console authentication"* in the *Web Console Guide*.

Perform silent installations of Server components

An unattended (silent) install requires that you first run an installation in the installer wizard (Windows or Linux) to capture the selected components and options, and then use the captured response file on targets on the same platform to 'playback' the responses into the installer without any user interaction.

Silent installations or updates for Corticon Server Components on Windows:

1. Run the Corticon Server for Windows installer with your preferred locations and options to capture a response file, using the syntax `installer.exe -r file` where *installer* is the preferred Server installer, and *file* is the response file you will reuse. For example:

```
PROGRESS_CORTICON_6.2.0_SERVER_WIN_64.exe -r C:\CorticonServer_620_WIN.responses
```

2. On other target Windows machines, access the Server 6.2 installer executable and the response file.
3. Run the installer using the syntax `installer.exe -i silent -f file` where *installer* is the Server installer, and *file* is your response file. For example:

```
PROGRESS_CORTICON_6.2.0_SERVER_WIN_64.exe -i silent -f  
C:\CorticonServer_620_WIN.responses
```

Silent installations or updates for Corticon Server Components on Linux:

1. Run the Corticon Server for Linux installer with your preferred locations and options to capture a response file, using the syntax `installer.bin -r file` where *installer* is the preferred Server installer, and *file* is the response file you will reuse. For example:

```
PROGRESS_CORTICON_6.2.0_SERVER_LNX_64.bin -r  
/usr/corticon/CorticonServer_620_LNX.responses
```

2. On other target Linux machines, access the Server 6.2 installer binary and the response file.
3. Run the installer using the syntax `installer.bin -i silent -f file` where *installer* is the Server installer, and *file* is your response file. For example:


```
PROGRESS_CORTICON_6.2.0_SERVER_LNX_64.bin -i silent -f  
/usr/corticon/CorticonServer_620_LNX.responses
```

Perform command-line Linux installations of Server components

A command-line install runs a Linux installation in a command shell as a text command with parameters.

To perform command-line installations for Corticon Server components:

1. On a supported 64-bit Linux platform, access the downloaded Linux installer binary file, `PROGRESS_CORTICON_6.2.0_SERVER_LNX_64.bin`
2. In a shell, run the binary with the console option. For example:

```
# ./PROGRESS_CORTICON_6.2.0_SERVER_LNX_64.bin -i console
```

3. Follow the prompts to complete the installation via the command-line.

Note: For Linux installations, the work directory path must not contain spaces.

How to set up Corticon .NET Server resources on an IIS server

The runtime server for Corticon Server for .NET is Microsoft Internet Information Services (IIS), a distinct setup into which you install and update with the latest Corticon Server for .NET resources.

- Obtain an appropriate Corticon license for Corticon Server.
- Confirm that your target machine meets the system requirements. See [System requirements](#) on page 8 for more information.
- See the Progress Software web page [Corticon 6.2 - Supported Platforms Matrix](#) for information on supported .NET Framework and IIS.

See the instructions for *"Web services on .NET" in the Web Services Guide*.

How to uninstall Corticon components

Uninstalling Corticon Studio or Corticon Server results in removing a complete major.minor version of those products, including any service packs or hotfixes applied. It is not possible then to uninstall just a service pack or hotfix.

Uninstalling Corticon Studio

To remove a version of Corticon Studio, do the following:

1. Close Corticon Studio.
2. Choose the **Start** menu **Control Panel** function **Programs and Features**, and then double-click on **Progress Corticon Studio 6.2** to launch its uninstaller.

Note: You could initiate the same task directly by navigating to [CORTICON_HOME]\Uninstall_Progress Corticon Studio 6.2, and then running Uninstall Progress Corticon Studio 6.2.exe.

The installed files in the Studio's [CORTICON_HOME] are removed. Files you created (including the complete workspace) are NOT removed or replaced during this process.

If the Uninstaller program is unable to fully remove components (usually because they are open), it will display messages, and might require a reboot to complete the process.

Uninstalling Corticon Server

The Corticon Server components -- Corticon Server for Java, Corticon Server for .NET, and the Corticon Web Console -- use common installation directories. As such, you cannot choose to uninstall just selected components. Uninstallation will remove all installed server components.

To uninstall Corticon Server on Windows:

1. Stop Corticon Server.
2. Backup any files you want to retain.
3. Choose the **Start** menu **Control Panel** function **Programs and Features**, and then double-click on **Progress Corticon Server 6.2.x** to launch its uninstaller.

Note: You could initiate the same task directly by navigating to [CORTICON_HOME]\Uninstall_Progress Corticon Studio 6.2, and then running Uninstall Progress Corticon Server 6.2.exe.

To uninstall Corticon Server on Linux:

1. Stop Corticon Server.
2. Backup any files you want to retain.
3. In a command shell, navigate to [CORTICON_HOME]\Uninstall_Progress Corticon Studio 6.2, and then run Uninstall Progress Corticon Server 6.2.bin.

The installed files in the Server's [CORTICON_HOME] are removed. Note that files you created are NOT removed or replaced during this process. No server files in the [CORTICON_WORK_DIR] are removed.