

Corticon

Installation Guide

Copyright

© 2018 Progress Software Corporation and/or one of its subsidiaries or affiliates. All rights reserved.

These materials and all Progress® software products are copyrighted and all rights are reserved by Progress Software Corporation. The information in these materials is subject to change without notice, and Progress Software Corporation assumes no responsibility for any errors that may appear therein. The references in these materials to specific platforms supported are subject to change.

Corticon, DataDirect (and design), DataDirect Cloud, DataDirect Connect, DataDirect Connect64, DataDirect XML Converters, DataDirect XQuery, DataRPM, Deliver More Than Expected, Icenium, Kendo UI, NativeScript, OpenEdge, Powered by Progress, Progress, Progress Software Developers Network, Rollbase, SequeLink, Sitefinity (and Design), SpeedScript, Stylus Studio, TeamPulse, Telerik, Telerik (and Design), Test Studio, and WebSpeed are registered trademarks of Progress Software Corporation or one of its affiliates or subsidiaries in the U.S. and/or other countries. Analytics360, AppServer, BusinessEdge, DataDirect Spy, SupportLink, DevCraft, Fiddler, JustAssembly, JustDecompile, JustMock, Kinvey, NativeScript Sidekick, OpenAccess, ProDataSet, Progress Results, Progress Software, ProVision, PSE Pro, Sitefinity, SmartBrowser, SmartComponent, SmartDataBrowser, SmartDataObjects, SmartDataView, SmartDialog, SmartFolder, SmartFrame, SmartObjects, SmartPanel, SmartQuery, SmartViewer, SmartWindow, and WebClient are trademarks or service marks of Progress Software Corporation and/or its subsidiaries or affiliates in the U.S. and other countries. Java is a registered trademark of Oracle and/or its affiliates. Any other marks contained herein may be trademarks of their respective owners.

Please refer to the Release Notes applicable to the particular Progress product release for any third-party acknowledgements required to be provided in the documentation associated with the Progress product.

Updated: 2018/02/08

Table of Contents

Chapter 1: Overview of Corticon Installations.....7

Chapter 2: Preparing for a Corticon Installation.....9

- Evaluation licensing.....10
- System requirements.....10
- About Corticon upgrades.....11
- Downloading Corticon installer packages.....11
- Applying a Service Pack or Hotfix.....12

Chapter 3: Installing Corticon Studio.....13

- Running the Corticon Studio installer wizard.....14
- Performing Silent Installations of Studio.....17
- Installing Corticon Studio plugins into an existing Eclipse.....18
- Increasing Corticon Studio memory allocation.....19
- Setting Studio to run in another language.....19

Chapter 4: Installing Corticon Servers and Web Console.....21

- Running the Server and Web Console installer wizard.....22
- Performing silent installations of Server components.....26
- Performing command-line Linux installations of Server components.....27
- Setting up and updating IIS for .NET Server.....28

Chapter 5: Registering your Corticon license.....29

- Updating your Corticon Studio license.....29
- Updating your Corticon Server license.....30
 - Limits of the Server evaluation license.....31

Chapter 6: Uninstalling Corticon Products.....33

Appendix A: Corticon 5.7 Online Tutorials and Documentation.....35

Overview of Corticon Installations

This guide presents procedures for accessing, downloading, and running Corticon 5.7 installers, as well as providing dynamic access to information about supported platforms. Links to the Progress Corticon KnowledgeBase provide additional information about third-party software setup.

Preparing for a Corticon Installation

Before running installers

To avoid possible constraints on the installer, do the following:

- **Confirm that you have Administrator permissions on the target machine** - Administrator rights allow the installer to copy all the Corticon files to their proper locations. You must have Administrator rights and permissions to install this software. See your system administrator to obtain these rights.
- **Obtain system access** - Several Corticon features write files to the “home” directory structure. If the target machine for the Corticon installation does not have read and write access to this directory, you need to choose a directory location where Corticon will have both read and write access.
- **Disable anti-virus, anti-malware, and anti-spyware protection applications** - Before performing the installation, consider temporarily disabling any anti-virus and anti-spyware software that may be running on the target machine, as such software might interfere with correct installation.

For details, see the following topics:

- [Evaluation licensing](#)
- [System requirements](#)
- [About Corticon upgrades](#)
- [Downloading Corticon installer packages](#)
- [Applying a Service Pack or Hotfix](#)

Evaluation licensing

Progress Corticon products are licensed for evaluation immediately after installation.

Studio Licensing - Corticon embeds a ninety-day evaluation license that enables development of business rules projects, as well as testing of the projects in an embedded test server. You must obtain Studio development licenses from your Progress representative.

Server Licensing - Corticon embeds a limited evaluation license that enables testing of rule modeling projects on supported platform configurations. You must obtain server deployment licenses from your Progress representative. See [Limits of the Server evaluation license](#) on page 31 to determine whether the evaluation license will constrain your evaluation.

System requirements

Progress Corticon products are supported on a variety of platforms and third-party components.

Corticon Studio

Refer to the Progress Software web page [Progress Corticon 5.7 - Supported Platforms Matrix](#) to review the currently supported Corticon Studio operating systems, and Eclipse versions.

The target system for a Corticon Studio installation requires:

- Supported Windows operating system
- 8 GB System RAM (minimum of 2 GB available RAM)
- 650 MB disk space
- When an existing Eclipse will be used, a supported Eclipse version

Corticon Server for Java

Refer to the Progress Software web page [Progress Corticon 5.7 - Supported Platforms Matrix](#) to review the currently supported platforms and application servers. Also see the Corticon KnowledgeBase entry [Corticon Server 5.X sample EAR/WAR installation for different Application Servers](#) for detailed instructions on configuring Apache Tomcat, JBoss, WebSphere, WebLogic on all supported platforms.

The target system for a Corticon Server for Java installation requires:

- Supported Windows or Linux operating system
- When deploying on other platforms, a supported operating system and application server
- 8 GB System RAM (minimum of 2 GB available RAM)
- 600 MB disk space

Corticon Server for .NET

Refer to the Progress Software web page [Progress Corticon 5.7 - Supported Platforms Matrix](#) for information on supported .NET Framework and IIS versions, and the Corticon Knowledgebase article appropriate for your target IIS/platform, as listed in the topic [Setting up and updating IIS for .NET Server](#) on page 28.

The target system for a Corticon Server for .NET installation requires:

- Supported Windows operating system
- Supported .NET Framework and Internet Information Service (IIS)
- 8 GB System RAM (minimum of 2 GB available RAM)
- 500 MB disk space

Corticon Web Console

Refer to the Progress Software web page [Progress Corticon 5.7 - Supported Platforms Matrix](#) for information on supported browser versions.

The target system for a Corticon Web Console installation requires:

- Supported Windows or Linux operating system
- 4 GB System RAM (minimum of 2 GB available RAM)
- Java option for MaxPermSize set to at least 256m
- 600 MB disk space

Note: When all three Server components are installed on one machine, the required space for the installation is about 1 GB.

About Corticon upgrades

Upgrading from an earlier release

Existing Corticon users advancing to this release will want to know whether their existing products can co-exist with the newer version, as well as any strategies for perpetuating the assets created in their current version.

If you have an existing installation of Corticon products on the target machine, do the following:

- **For an upgrade of a 5.3.x, 5.4.x, 5.5.x, or 5.6.x installation to 5.7** - If you are upgrading from 5.3, 5.4, 5.5, or 5.6 installed software on the same machine, 5.7 will install to new location and run independent of the other releases. You must manage any port overloads that might result from running both versions.
- **For an upgrade of a 5.2 or earlier version 5 installation to 5.7** - An installed version of Corticon 5.2 or earlier installed on the target machine must be [uninstalled](#), then the appropriate Corticon 5.7 product installed.

We recommend that you consult with Progress Corticon Support or your Progress representative to discuss your migration strategies for existing assets before you take action.

- **For an upgrade of a 4.3 or earlier installation to 5.7** - Download and install Corticon Studio 5.3.0 or 5.4.0, and then perform the procedures in its *Corticon Migration Guide*. Once completed, uninstall the 4.3 installation, and install 5.7 where its upgrade utility can bring project assets up to date. We recommend that you consult with Progress Corticon Support or your Progress representative to discuss your migration strategies for existing assets before you take action.

Downloading Corticon installer packages

To download required Corticon installers:

1. Get credentials to access and download packages on the Progress Software Electronic Software Download (ESD) site.
2. Connect to the ESD, and then navigate to the Corticon 5.7 page.
3. Locate, download, and save the required installers to a temporary location accessible by the target machine.

Downloading the Corticon Studio installer package

For supported Windows machines: `PROGRESS_CORTICON_5.7_STUDIO_WIN_64.exe`

Downloading the Corticon Server and Web Console packages

Microsoft Windows

Corticon Server and Web Console 5.7 products for Windows -- Java Server, .NET Server, and Web Console -- are packaged in executable installer applications and ZIP archives.

For supported Windows machines, download: `PROGRESS_CORTICON_5.7_SERVER_WIN_64.exe`

Zip Archives

Corticon Server and Web Console .war files are available in a Corticon Server .zip archive. Use it to install the Server Console or Web Console on a supported application server without using the executable installers.

Linux

Corticon Server and Web Console 5.7 products for Linux -- Java Server, and Web Console -- are packaged in executable installer applications for supported Linux machines:

`PROGRESS_CORTICON_5.7_SERVER_LNX_64.bin`

Applying a Service Pack or Hotfix

Install Corticon Service Packs and Hotfixes with new installations of Corticon when necessary, or to upgrade an existing installation. To apply a service pack or hotfix, navigate to the Progress Software Electronic Software Distribution (ESD) download web site for Corticon products, and locate the appropriate package. Then, install it on your target machine.

Installing Corticon Studio

There are several techniques for installing Corticon Studio:

- [Running the Corticon Studio installer wizard](#) on page 14, the typical use, which enables a complete Corticon Studio Eclipse installation that can standalone, or be tailored into another Eclipse IDE on the same machine.
- [Performing Silent Installations of Studio](#) on page 17 that generates a file from an installer wizard run to let you perform silent Studio installations on other machines.
- [Installing Corticon Studio plugins into an existing Eclipse](#) on page 18 which enables scripted installation of Corticon Studio plugins into an existing Eclipse.

What Corticon Studio installers provide

The installer wizard package includes:

- Corticon Studio resources
- Eclipse Development Environment and Eclipse online documentation.
- Java Runtime Environment (JRE)
- Sample projects
- API documentation for extending Corticon
- Corticon Server runtime for use in testing rules you create in Corticon Studio

Installation options

A new Corticon Studio install lets you choose to install it standalone, or to add its plugins to an existing Eclipse 4.5 installation.

For details, see the following topics:

- [Running the Corticon Studio installer wizard](#)
- [Performing Silent Installations of Studio](#)
- [Installing Corticon Studio plugins into an existing Eclipse](#)
- [Increasing Corticon Studio memory allocation](#)
- [Setting Studio to run in another language](#)

Running the Corticon Studio installer wizard

The Studio installer will install or update Studio 5.7.

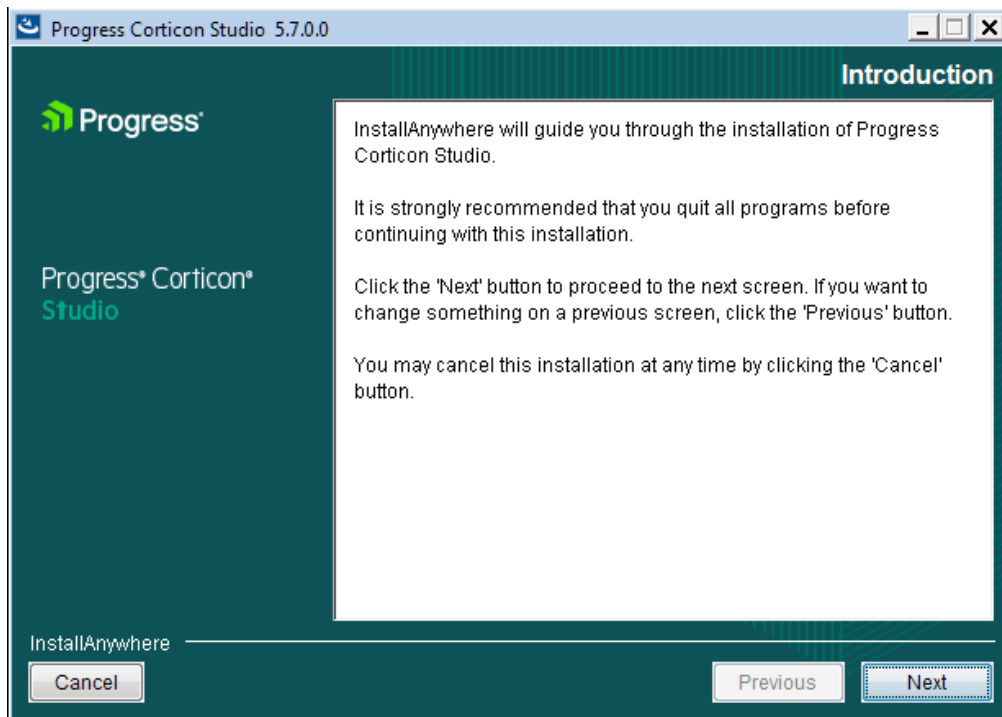
Installing or updating Studio 5.7

To perform a new installation of Corticon Studio 5.7:

1. Double click on the installer file, `PROGRESS_CORTICON_5.7_STUDIO_WIN_64.exe`, to launch the Corticon Studio installer.

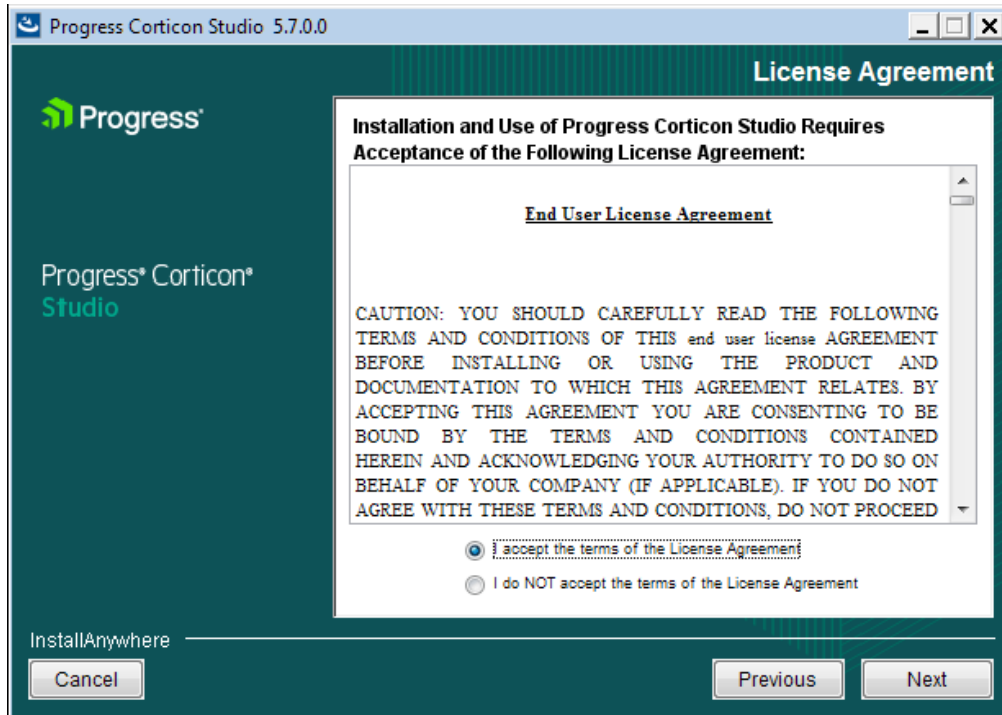
The installer opens in the installer wizard.

2. The first installer panel opens with information about the installer.



3. Click **Next** to continue.

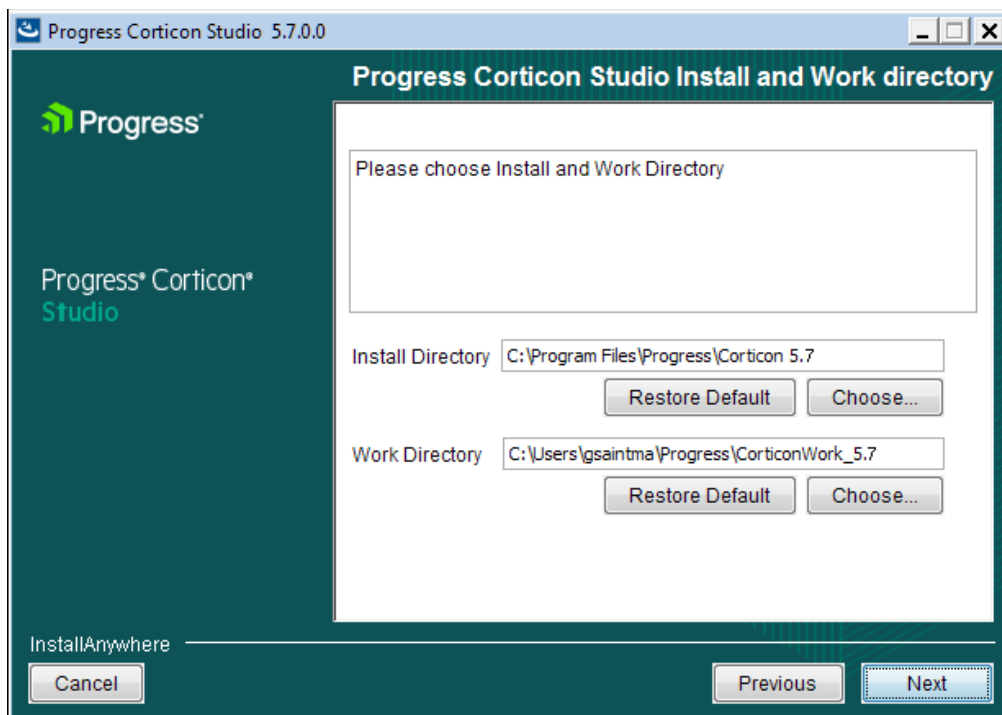
The **License Agreement** panel opens.



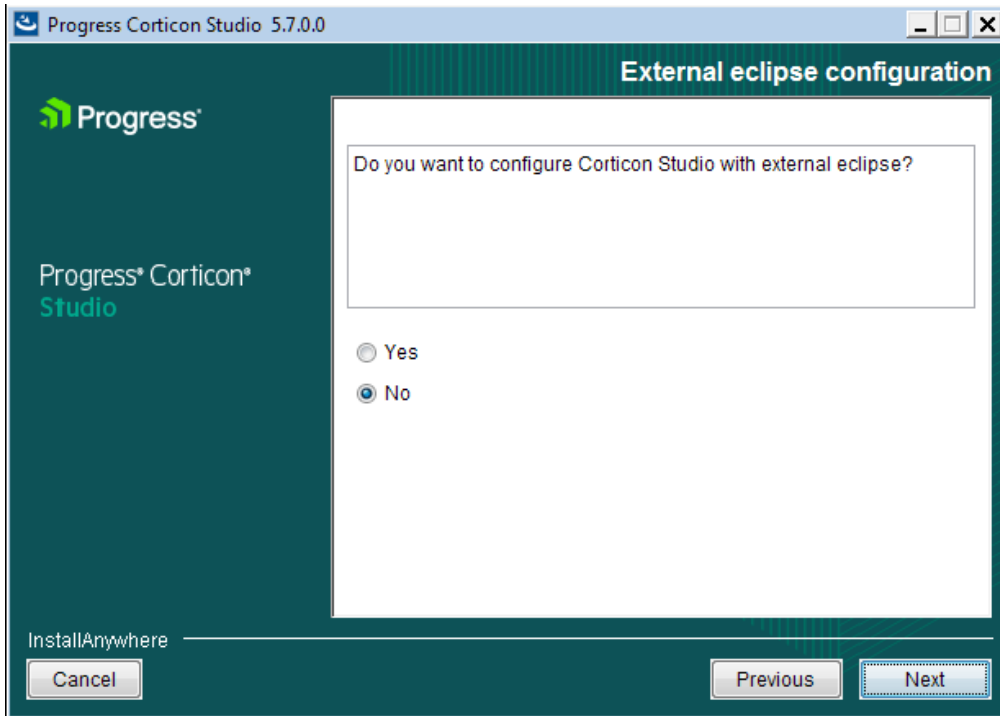
This panel displays the Progress Software End User License Agreement (EULA). Use the scroll bar at the right of the screen to read the agreement content.

4. When you understand and agree to the terms, choose **I accept the terms in the license agreement**, and then click **Next** to continue.

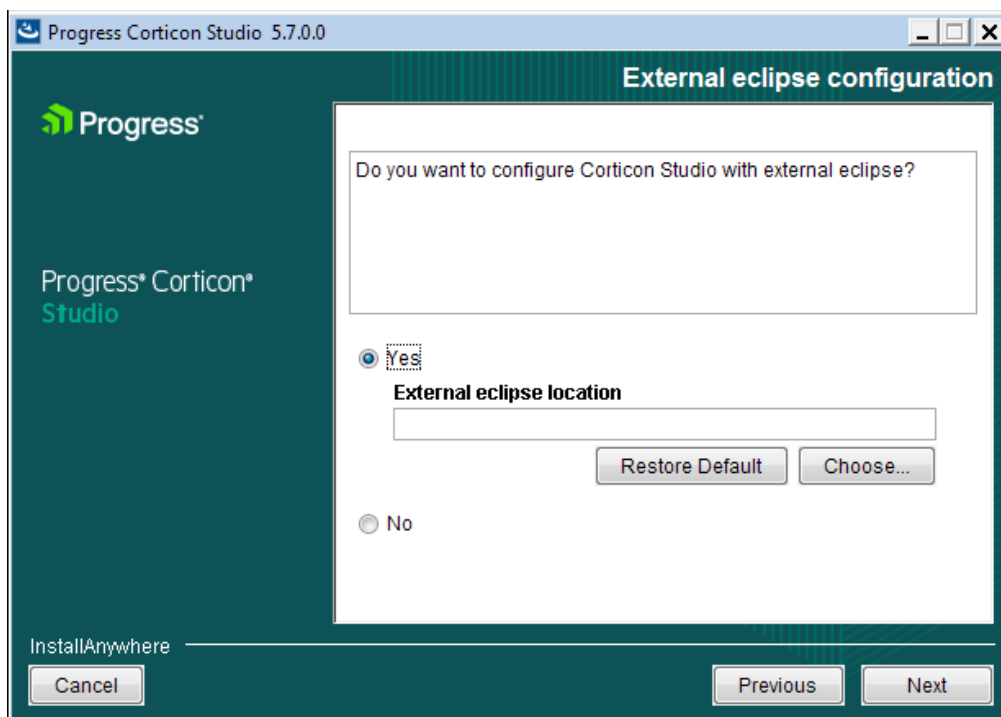
The **Choose Install Folder** panel opens.



- Specify the installation location. The default location for the installation directory and the work directory are as shown above. (For the work directory, the default subdirectory under `Users` is the current username.) Either accept the default locations, or specify each preferred (and different) location.
- Click **Next**.
- The **External eclipse configuration** panel opens:



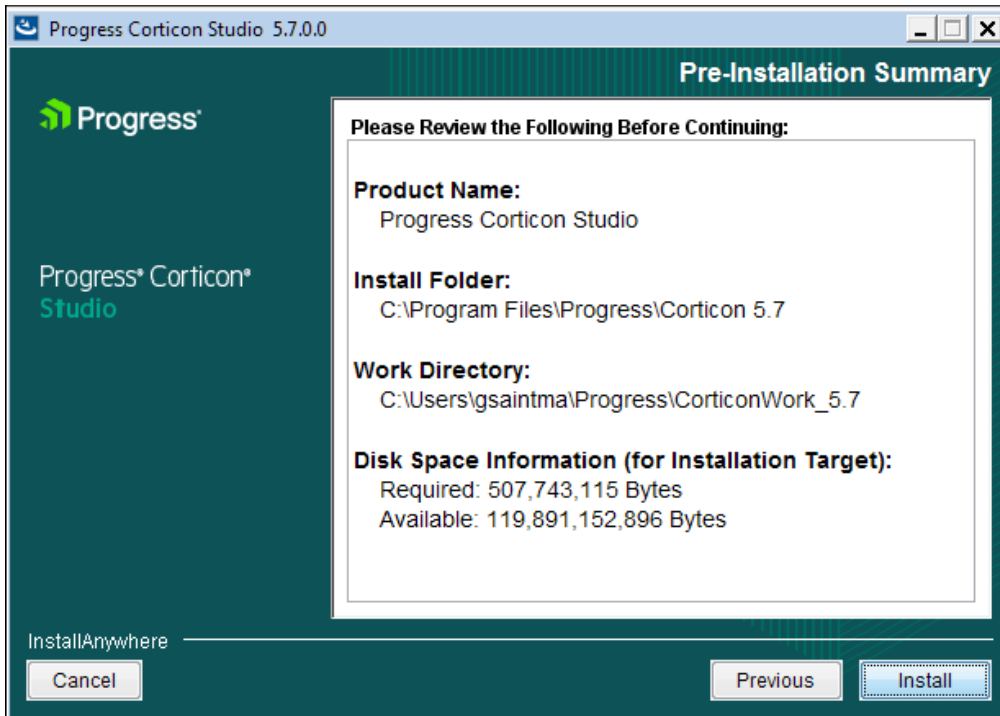
- If you select **Yes** on this panel, the entry area for the **External Eclipse location** in which you want to add Corticon Studio (in addition to a standard installation) is presented:



Enter or browse to the location of the existing Eclipse 4.5 64-bit installation.

- If you leave the selection as **No**, a normal installation will proceed.
When you have decided which path to take, click **Next** to continue.

8. The **Pre-installation Summary** panel opens.



Confirm that your installation location has adequate disk space for the Corticon Studio components as well as at least 100 MB of workspace.

9. Click **Install** to continue.

An installation status window opens to display the state of the installation process. When the process has finished, the **Install Complete** panel opens.

10. Click **Done** to quit and close the installer.

The installation or update of Corticon Studio 5.7 is complete.

Performing Silent Installations of Studio

An unattended (silent) install requires that you first run an installation or updater in the installer wizard to capture the selected options, and then use the captured response file on other targets to 'playback' the responses into the installer without any user interaction.

To perform silent installations for Corticon Studio:

1. Run the Studio installer with your preferred locations and options to capture a response file, using the syntax `installer.exe -r file` where `installer` is the preferred Studio installer, and `file` is the response

file you will reuse. For example, `PROGRESS_CORTICON_5.7_STUDIO_WIN_64.exe -r C:\CorticonStudio64_57.responses`

2. On other target machines, access the Studio 5.7 installer executable and the response file.
3. On those machines, run the installer using the syntax `installer.exe -i silent -f file` where `installer` is the Studio installer, and `file` is your response file. For example, `PROGRESS_CORTICON_5.7_STUDIO_WIN_64.exe -i silent -f C:\CorticonStudio64_57.responses`.

Installing Corticon Studio plugins into an existing Eclipse

These instructions apply when you want to install Corticon functionality into an installed 64-bit Eclipse IDE.

1. A Java Software Development Kit (JDK) is required for Corticon, not just a Java Runtime Environment (JRE). If you do not have one installed locally, download and install a 1.7 or higher 64-bit version from the Oracle Java website <http://www.oracle.com/technetwork/java>

Note: For the installation of the Corticon Studio plugins, you can use the JRE that Eclipse is using. In Eclipse, choose **Window > Preferences**, then select **Java > Installed JREs**.

2. Download and perform a standard installation of Corticon Studio into a clean directory on the target machine. This installation will provide the script and the required files for the integration into your target Eclipse location.
3. In a Command Prompt window at the Corticon Studio's `[CORTICON_HOME]/Studio` location, check to see whether `JAVA_HOME` is set. If not, set `JAVA_HOME` to the JDK root. For example: `set JAVA_HOME=c:\jdk1.7u67_64`
4. Confirm that neither the installed Corticon Studio or the target Eclipse are running.
5. In the Command Prompt, run the integration script in the form:

```
integrateCorticon.bat -install eclipse_target
```

where `eclipse_target` is the root directory of the target Eclipse installation.

Eclipse installs its required plug-ins.

6. To ensure that Corticon Ruletests can locate `javac` to compile rules, add the path of the JDK to your `PATH` as the default Java to use. For example:

```
set PATH=%JAVA_HOME%\bin;%PATH%
```

7. Specify the Corticon work directory, the folder where you want Corticon to write its log and other temporary files. For example:

```
set CORTICON_WORK_DIR=c:\corticon_work_dir
```

8. When the script successfully completes, restart the Eclipse session, and then verify the installation by selecting the menu command **Help > About Eclipse**. Click **Installation Details** to confirm that **Progress Corticon Feature** is installed.
9. Open a project, and then run a Ruletest. A successful run indicates that the Java compiler is being accessed correctly.

The `integrateCorticon` script enables other functions:

```

COMMAND SYNTAX AND OTHER OPTIONS
=====
Usage: integrateCorticon [OPTION] [TARGET_ECLIPSE]
Manage installation of Corticon plugins in an Eclipse install
-install          Install Corticon plugins in TARGET_ECLIPSE
-uninstall        Uninstall Corticon plugins from TARGET_ECLIPSE
-update           Update Corticon plugins in TARGET_ECLIPSE
-updateParams    Update Corticon plugins parameters in TARGET_ECLIPSE
-help            Display this message
    
```

Increasing Corticon Studio memory allocation

When working on large Rule Projects, you will get better performance by increasing the amount of memory available to Corticon Studio.

To change Corticon Studio memory allocation after installation, do the following:

1. Edit the command file `eclipse.ini` located at `[CORTICON_HOME]\Studio\eclipse`
2. Change (typically, increase) the `Xmx` value (maximum memory setting). The default `Xmx` setting is 2 gigabytes, specified as `Xmx2g`.

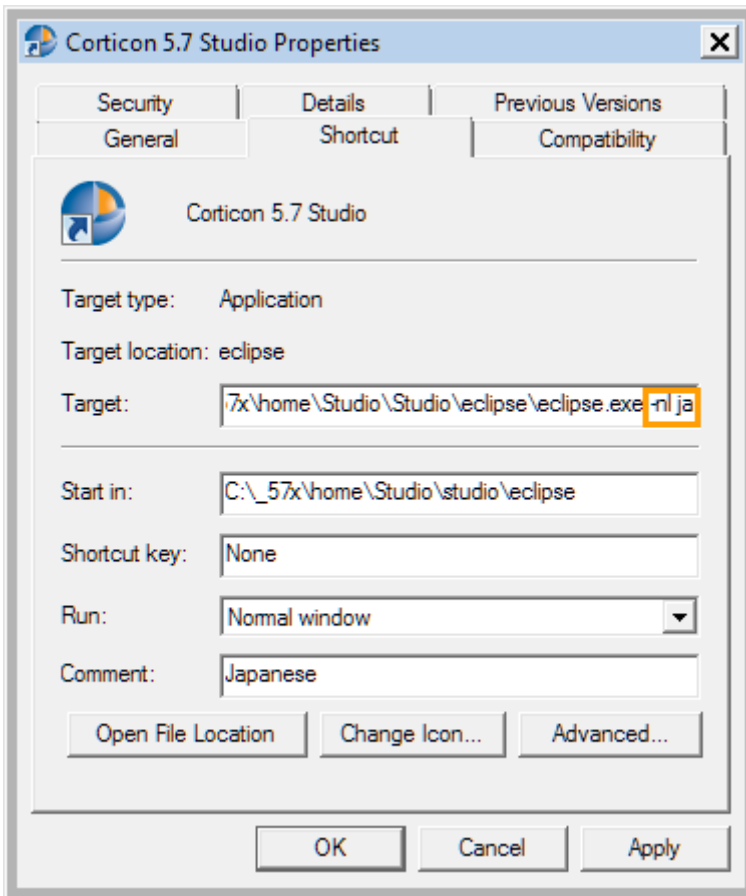
Setting Studio to run in another language

You can specify a preferred language for Corticon Studio. the options are:

- English (`en` - default)
- French (`fr`)
- Japanese (`ja`)
- Portuguese (Brazilian) (`pt_BR`)
- Spanish (`es`)

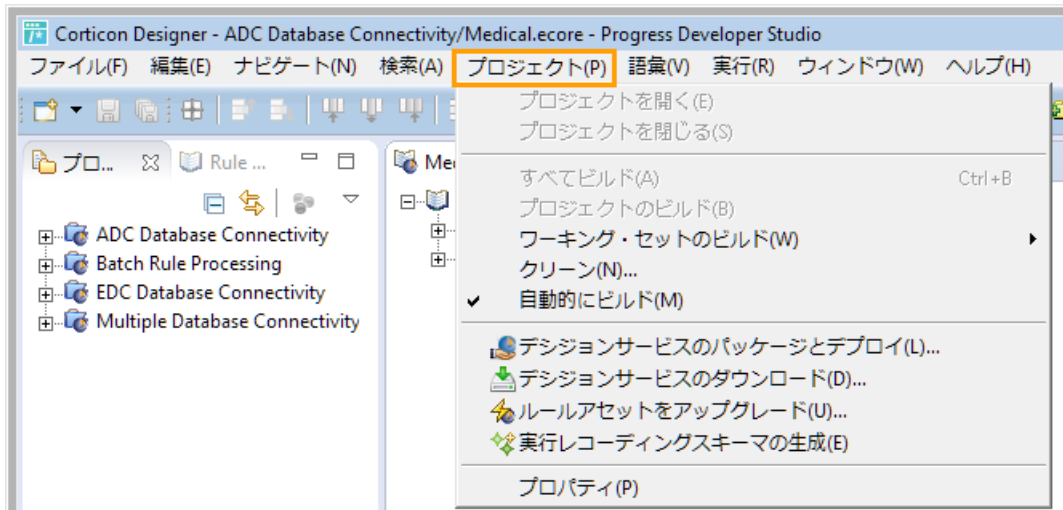
To set Corticon Studio to start in your preferred language:

1. Right-click on the **Start** menu item for **Corticon 5.7 Studio**, and then choose **Properties**.
2. In the properties dialog box, add the language option, `-nl` followed by the language value, as shown in this example setting `ja` for Japanese:



3. Click **Apply**, and then **OK** to set the change.

When you start Corticon Studio its labels are in Japanese, as illustrated:



Installing Corticon Servers and Web Console

This section provides information about the installation procedures for the deployment and administration components of Corticon Server as well as the [Progress Application Server \(PAS\)](#) -- a Web application server based on Apache Tomcat -- that is used by the Java Server and the Web Console.

Note: Linux Installation - When you download and run the Linux server installer, you get shell (.sh) scripts for start/stop and utility tools that correspond to the batch (.bat) scripts in a Windows installation.

There are several techniques for installing Corticon Server components:

- [Running the Server and Web Console installer wizard](#) on page 22, the typical use, which enables a complete Corticon Server for Java, Corticon Server for .NET, and Corticon Web Console.
- [Performing silent installations of Server components](#) on page 26 that generates a file from an installer wizard run to let you perform silent installations of Server components on other Windows machines.
- [Performing command-line Linux installations of Server components](#) on page 27 enables the Linux installer to run from the shell as a command with parameters.
- **Performing a manual installation of Server components:** Corticon Server for Java and Web Console are available in zip archives. Use them to manually install Corticon WAR/EAR files into a supported application server on any supported platform. For details about installing Corticon into specific application servers, see [Corticon Server 5.X sample EAR/WAR installation for different Application Servers](#) .

Considerations for Authentication

Confirm that servers that will host Corticon Server installations are enabled for authentication, and that Decision Service administrators have the credentials to deploy to those servers.

When you run the Corticon Server installer, the [Progress Application Server \(PAS\)](#) does not enable authentication by default. To do so, see *"Setting up authentication for secure server access" in the Integration and Deployment Guide*.

For details, see the following topics:

- [Running the Server and Web Console installer wizard](#)
- [Performing silent installations of Server components](#)
- [Performing command-line Linux installations of Server components](#)
- [Setting up and updating IIS for .NET Server](#)

Running the Server and Web Console installer wizard

The Server installer will install or update Servers and Web Console to 5.7.

Installing or updating Server and Web Console 5.7

You can install Corticon Servers and the Web Console on a machine that does or does not already have a previous version installed. If a previous version is installed, you must manage any port overloads that might result from running both versions.

Note: An installed version of Corticon Server 5.2 or earlier on the target machine must be [uninstalled](#), then Corticon Server 5.7 installed. Consult with Progress Corticon Support or your Progress representative to consider your migration strategies for existing assets before you take action.

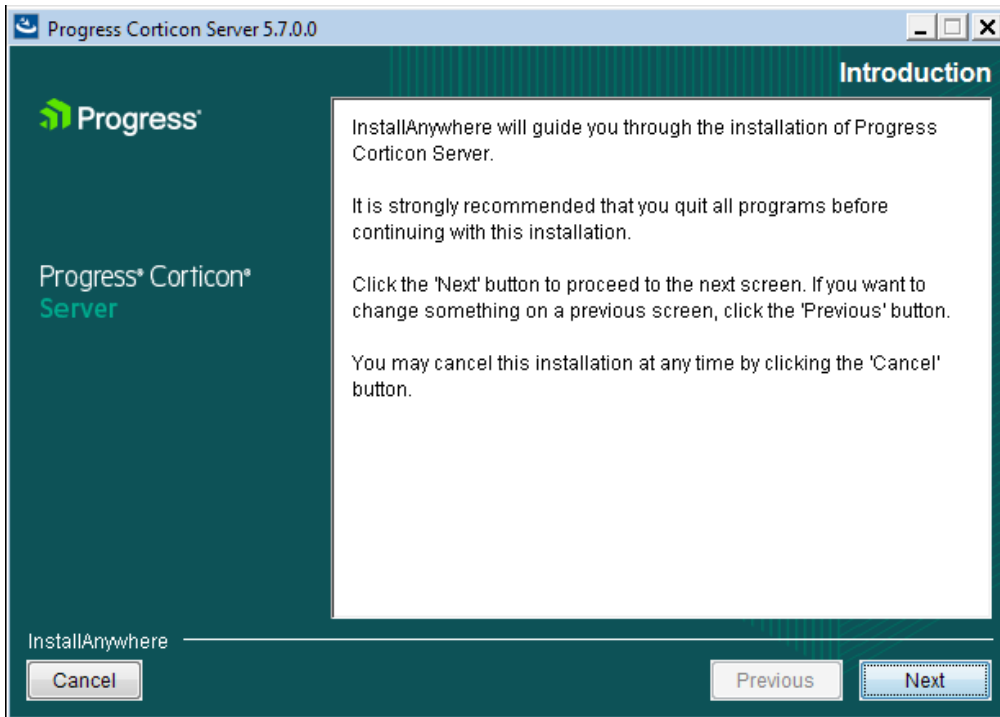
Installation procedure

If you have already installed either of the 5.7 Servers or the Web Console, the installer will allow you to install components not previously installed, as well as update all installed components to the latest Service Pack.

To create or update an installation of Corticon Servers (Java and .NET) and Web Console 5.7:

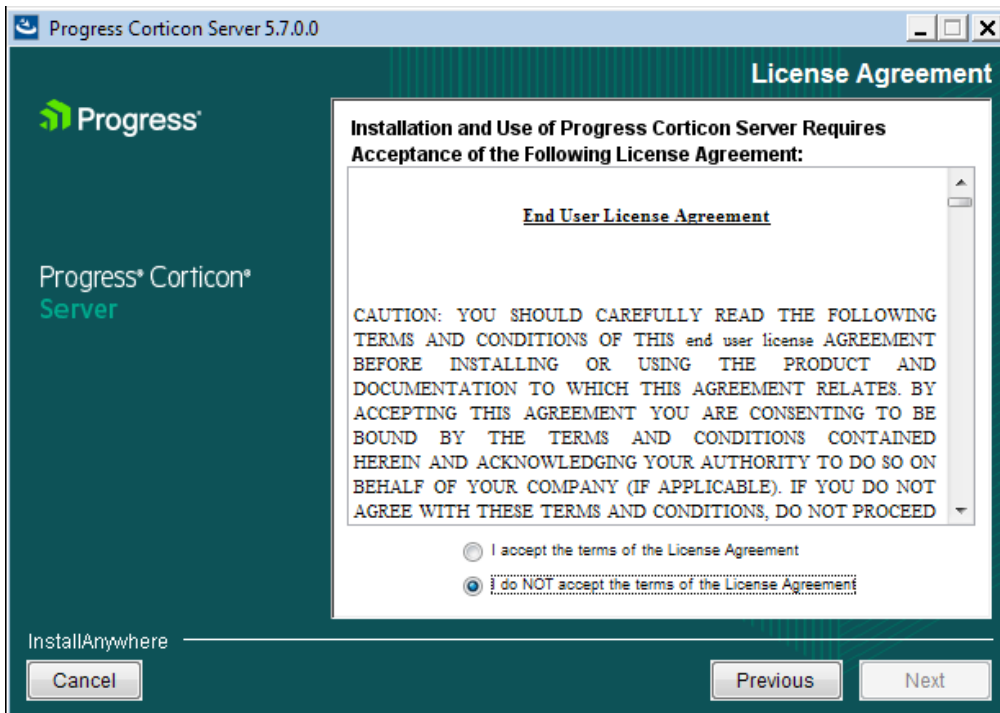
1. On the target machine, access the Corticon 5.7 installers you [downloaded](#).
2. To open the Progress Corticon Server Setup Wizard:
 - For Windows, double click on: `PROGRESS_CORTICON_5.7_SERVER_WIN_64.exe`
 - For Linux, run: `PROGRESS_CORTICON_5.7_SERVER_LNX_64.bin`

The installer opens in the installer wizard. The first installer panel opens with information about the installer.



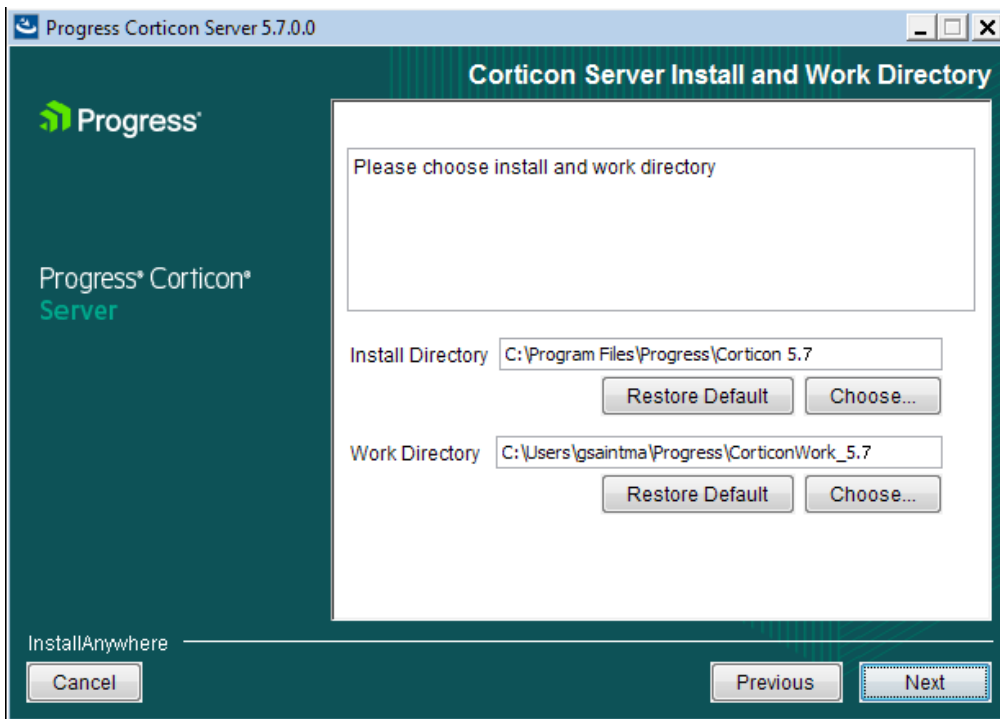
3. Click **Next** to continue.

The **License Agreement** panel opens.



4. After you have read, understood, and agreed to the terms of the End User License Agreement, choose **I accept the terms of the license agreement**, and then click **Next**.

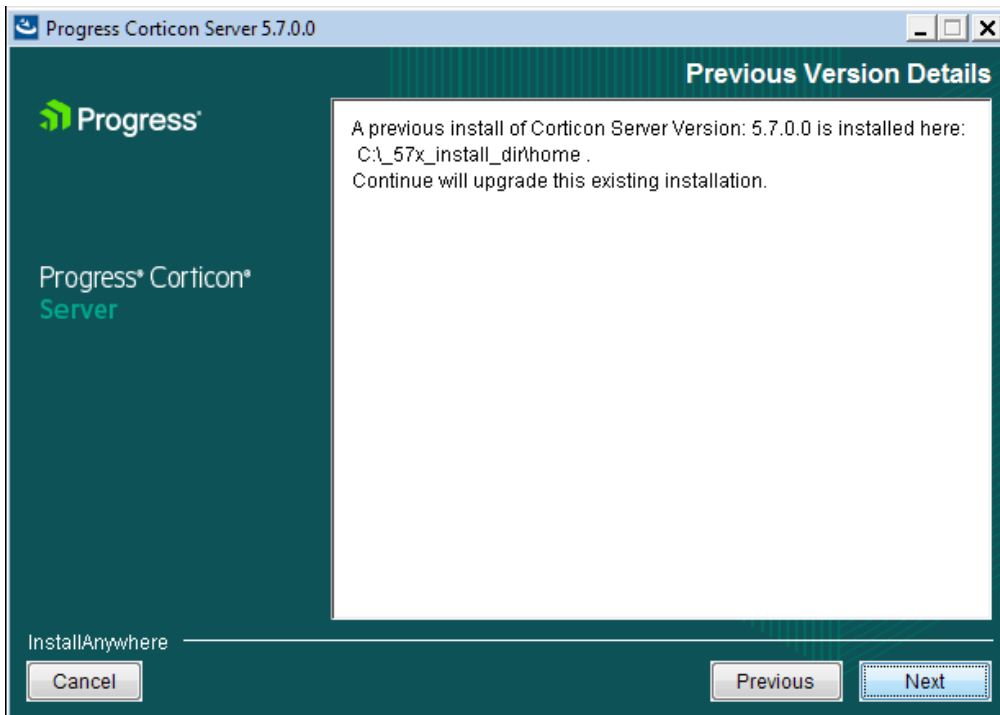
The **Choose Install Folder** panel opens.



5. The default installation directories are shown. To specify preferred directories on each line, either enter the explicit path, or click **Choose** to browse to each preferred directory.

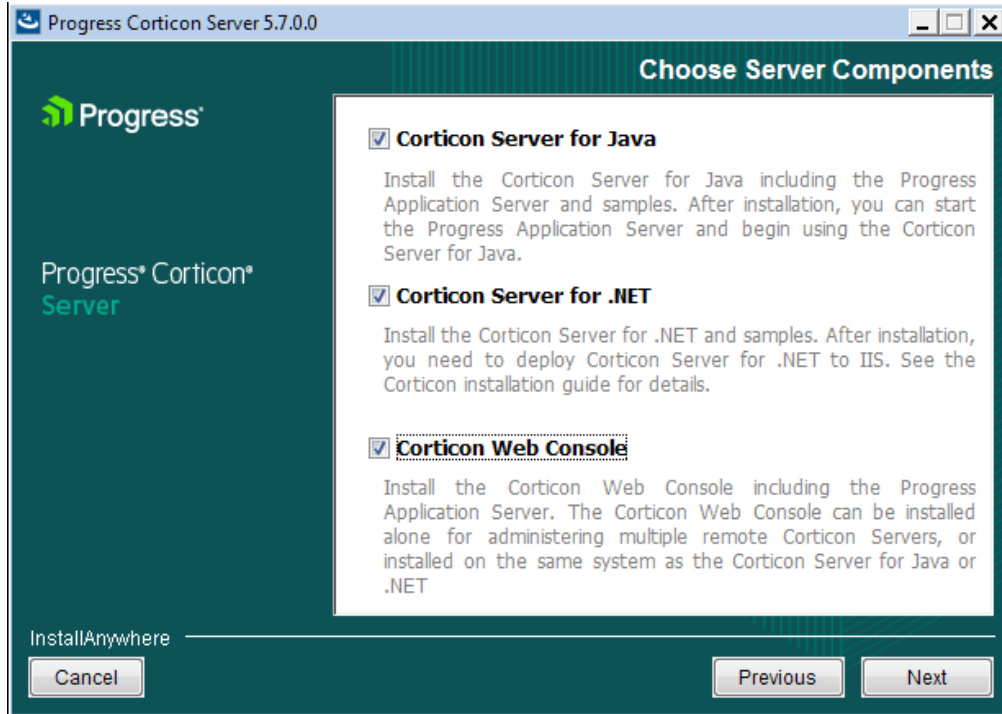
Note: For Linux installations, the work directory path must not contain spaces.

6. If you see the upgrade panel instead, Corticon Server components are already installed. You can add previously unselected components but you cannot change the install location or uninstall existing components.



7. Click **Next**.

The **Choose Server Components** panel opens.

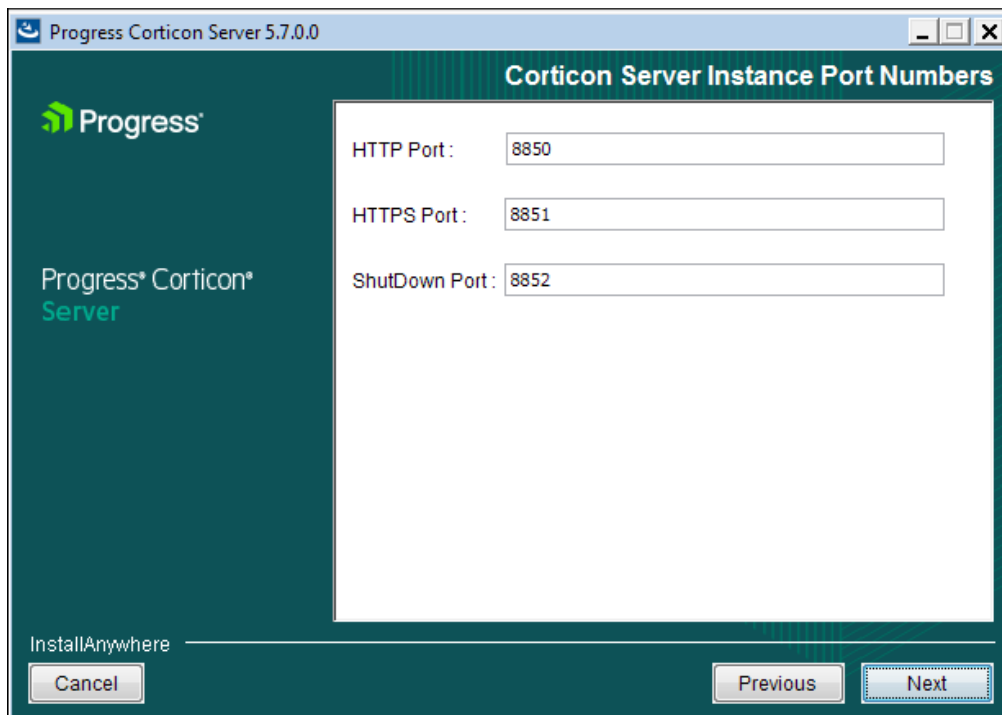


- Choose the one or more components you want to install at this time. Any components already installed are chosen and grayed out.

Note: The Linux installer does not enable a Corticon Server for .NET installation.

Click **Next**.

If you selected the Java Server or Web Console, the **Corticon Port Numbers** panel opens.



9. If any of the preferred ports conflict with existing applications, you can change them at this time to an integer value from 1024 to 49151. Be aware that the documentation references these ports as though the default values, as shown, were accepted. Consult with your system administrator to identify alternate ports you might use, or to reset the ports on the conflicting applications.

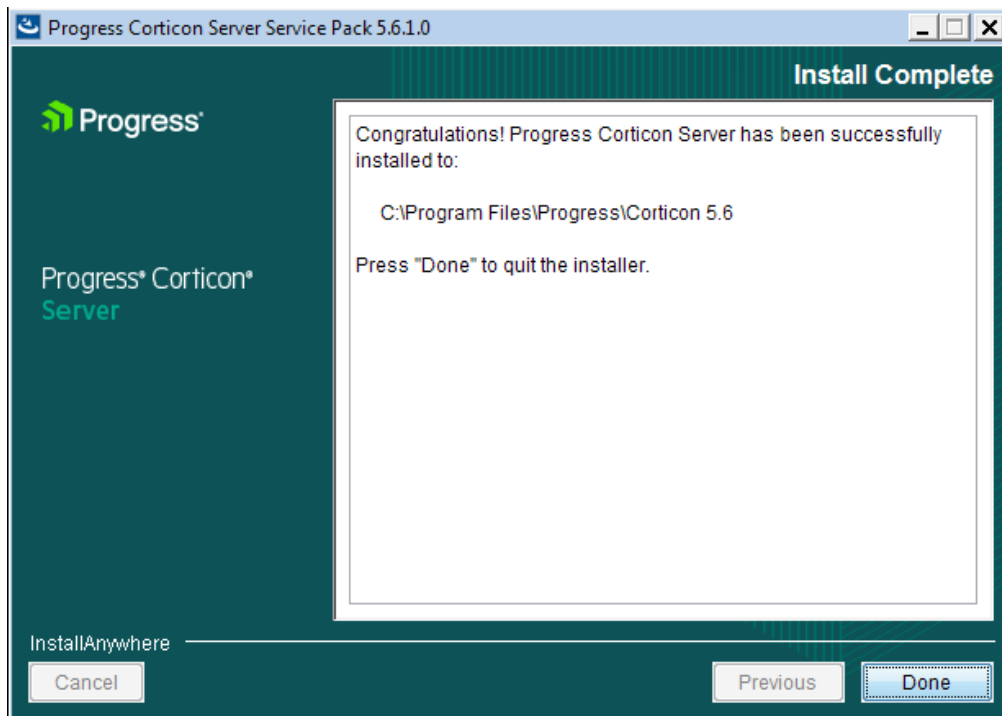
Enter your preferred port numbers, and then click **Next**.

The **Pre-Installation Summary** page opens.

10. Verify your selections in the **Pre-Installation Summary** panel. Nothing has happened yet so you can click **Previous** to go back to a panel to make changes, or click **Cancel** to quit this installation procedure.
11. Click **Install** to continue.

The installation status window opens.

When done, the **Install Complete** panel opens.



12. Choose **Done** to complete the Corticon Server / Web Console installation and close the installer.

The installation and update of Corticon Servers and Web Console 5.7 is complete.

Note: Using an LDAP store for Web Console authentication - You can set up Corticon Web Console to authenticate users using an LDAP server. See the topic *"Using LDAP for Web Console authentication"* in the *Web Console Guide*.

Performing silent installations of Server components

An unattended (silent) install requires that you first run an installation in the installer wizard (Windows or Linux) to capture the selected components and options, and then use the captured response file on targets on the same platform to 'playback' the responses into the installer without any user interaction.

Silent installations or updates for Corticon Server Components on Windows:

1. Run the Corticon Server for Windows installer with your preferred locations and options to capture a response file, using the syntax `installer.exe -r file` where `installer` is the preferred Server installer, and `file` is the response file you will reuse. For example:

```
PROGRESS_CORTICON_5.7_SERVER_WIN_64.exe -r C:\CorticonServer_57_WIN.responses
```

2. On other target Windows machines, access the Server 5.7 installer executable and the response file.
3. Run the installer using the syntax `installer.exe -i silent -f file` where `installer` is the Server installer, and `file` is your response file. For example:

```
PROGRESS_CORTICON_5.7_SERVER_WIN_64.exe -i silent -f
C:\CorticonServer_57_WIN.responses
```

Silent installations or updates for Corticon Server Components on Linux:

1. Run the Corticon Server for Linux installer with your preferred locations and options to capture a response file, using the syntax `installer.bin -r file` where `installer` is the preferred Server installer, and `file` is the response file you will reuse. For example:

```
PROGRESS_CORTICON_5.7_SERVER_LNX_64.bin -r
/usr/corticon/CorticonServer_57_LNX.responses
```

2. On other target Linux machines, access the Server 5.7 installer binary and the response file.
3. Run the installer using the syntax `installer.bin -i silent -f file` where `installer` is the Server installer, and `file` is your response file. For example:

```
PROGRESS_CORTICON_5.7_SERVER_LNX_64.bin -i silent -f
/usr/corticon/CorticonServer_57_LNX.responses
```

Performing command-line Linux installations of Server components

A command-line install runs a Linux installation in a command shell as a text command with parameters.

To perform command-line installations for Corticon Server components:

1. On a supported 64-bit Linux platform, access the downloaded Linux installer binary file, `PROGRESS_CORTICON_5.7_SERVER_LNX_64.bin`
2. In a shell, run the binary with the console option. For example:


```
# ./PROGRESS_CORTICON_5.7_SERVER_LNX_64.bin -i console
```
3. Follow the prompts to complete the installation via the command-line.

Note: For Linux installations, the work directory path must not contain spaces.

Setting up and updating IIS for .NET Server

The runtime server for Corticon Server for .NET is Microsoft Internet Information Services (IIS), a distinct setup into which you install the latest Corticon resources. This topic links to initial setup of IIS, adjustments to its setup when upgrading, and the follow-up task to every upgrade or service pack update that copies the latest resources to the IIS location.

To setup IIS to support Corticon Server for .NET 5.7.x, access the appropriate Corticon Knowledgebase article that describes the complete configuration of .NET Framework and IIS:

- [Steps to set up IIS 7.5 on Windows Server 2008 or Windows 7 for Corticon Server for .NET 5.x](#). These instructions are also appropriate for Windows 10.
- [Steps to set up IIS 8.0 and 8.5 on Windows Server 2012 R1 and R2 for Corticon Server for .NET 5.x](#) These instructions are also appropriate for Windows Server 2016.

Note:

Corticon on IIS needs to use **Common HTTP Features**. You can confirm or set these features in the **Control Panel > Programs and Features**. Select **Turn Windows feature on or off**, and then expand to **Internet Information Services > World Wide Web Services**. Turn on all the features in the IIS program feature group **Common HTTP Features**

To upgrade or update Corticon Server for .NET into the IIS location:

1. Start **Administrative Tool > IIS Manager**. In the **Actions** panel, click **Stop**.
2. In `[CORTICON_HOME_5.7]\Server .NET\IIS`, launch `install.bat`.
3. Accept or adjust the target location, and then press **Enter**. The 5.7 resources and the deployment descriptor files are copied. The corresponding assets are copied to the IIS path, `/Samples/Rules Projects`.
4. In the **IIS Manager**, on the **Actions** panel, click **Start**.

Registering your Corticon license

Progress Corticon customers must replace the evaluation license to enable the licensed features and time limits.

When you obtain a license file, it applies to Studios as well as Servers. You must perform configuration tasks to record it for each Corticon Studio, each Corticon Server, and each Deployment Console.

For details, see the following topics:

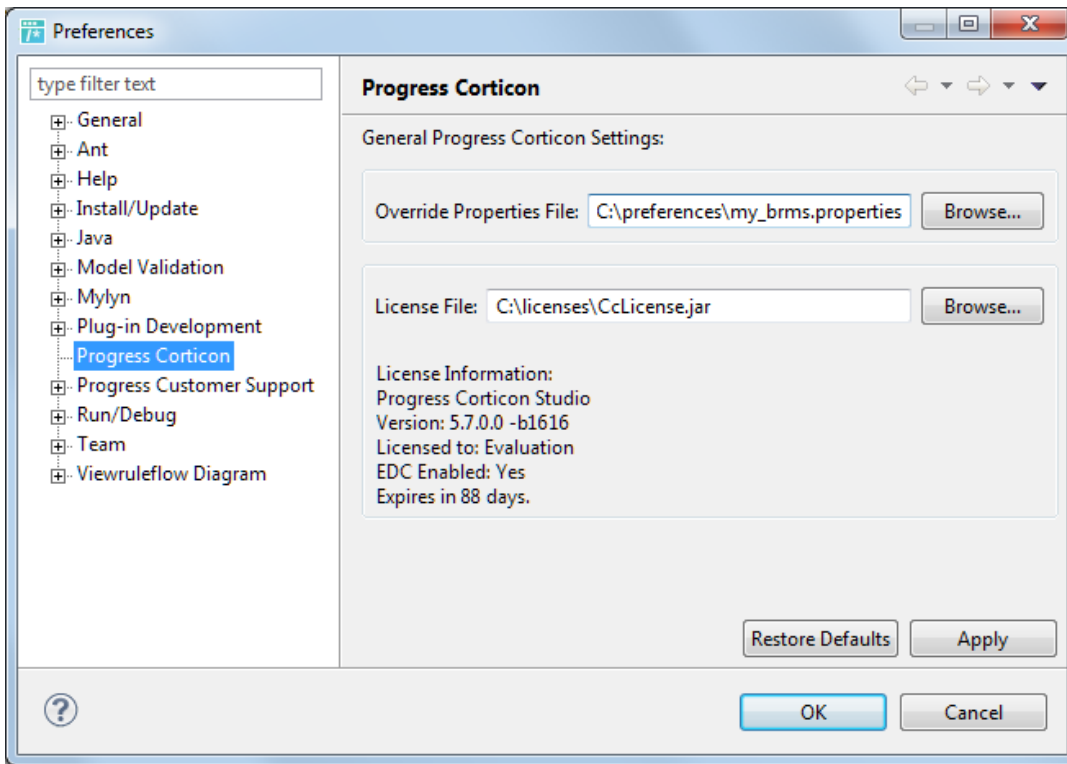
- [Updating your Corticon Studio license](#)
- [Updating your Corticon Server license](#)

Updating your Corticon Studio license

When you are provided a license for Corticon Studio, you receive a JAR file. Save the file on the target machine or at a location that is network-accessible to the installation. The default license file for evaluation is embedded within the installation and cannot be replaced directly. In this example, the license file that both Studio and Server will use, `CcLicense.jar`, is placed at `C:\licenses`.

To update a Studio license, do the following:

1. With Studio running, select the menu command **Window > Preferences**.
2. Expand the **Progress Corticon** group.
3. In the **License File** entry area, enter or browse to the location of the license JAR:



4. Click **Apply**, and then click **OK**.
5. Restart Corticon Studio.

Updating your Corticon Server license

When you obtain a Server license file as a customer, you need to locate it at the default locations as well as the runtime locations. Then, when you stop and restart Corticon Server again, your license file is referenced.

Updating the .NET server license

Copy your `CcLicense.jar` file, and then paste it to replace the existing file at:

- `[CORTICON_HOME]\Server .NET\samples\lib\`
- `[CORTICON_HOME]\Server .NET\webservice\lib\`
- The IIS location, typically: `C:\inetpub\wwwroot\axis\lib\`

Updating the Java server license

Copy your `CcLicense.jar` file, and then paste it to replace the existing file at:

- `[CORTICON_HOME]\Server\lib\`
- `[CORTICON_WORK_DIR]\Server\pas\server\webapps\axis\WEB-INF\lib`

Note: When you download `.ear` and `.war` files for deployment onto other supported platforms and application servers, they contain the evaluation `CcLicense.jar`. Once you are a Corticon customer, you are provided a permanent version of this file. Inserting the `CcLicense.jar` file into the `.ear` or `.war` will replace the evaluation file to redefine the license limitations.

Note:

You can choose to locate the license by another JAR name at a preferred location, and then expressly identify it to the server.

To custom configure Corticon Java Server's license location:

1. Navigate in the file system to the installation's `[CORTICON_HOME]\Server\bin` subdirectory.
 2. Double-click on `testServerAxis.bat`, then do the following:
 - a. Type `416` and then press **Enter**.
 - b. Enter (or copy/paste) the complete path to the location of the license JAR file, as in this example, `C:\licenses\myCorticon_CcLicense.jar`. The command echoes back `Transaction completed`.
 - c. To confirm the setting, type `415`, and then press **Enter**. The path is echoed back.
 3. For the in-process instance, double-click on `testServer.bat` to perform the same `416` and `415` tasks as in Step 2 above
-

Limits of the Server evaluation license

The license included in the default Corticon Server installation has pre-set limits on certain Corticon Server and Decision Service parameters. These limits are:

- **Number of Decision Services** – Up to 20 Decision Services may be deployed at any given time. This means the sum total of all Decision Services loaded via `.cdd` files, Web Console, or APIs cannot exceed 20.
- **Number of Rules** – All rules in all deployed Ruleflows (that is, all deployed Decision Services) must not exceed 500. A rule generally consists of a single Condition/Action Column or a single Action row in Column 0. Filter expressions do not count because they only modify other rules.

The Corticon Server log can capture errors and exceptions caused by expired or “under-strength” licenses. These log messages are detailed in the *Using Corticon Server logs section of the Integration and Deployment Guide*.

If you are Progress Corticon customer, you should have access to an unlimited license that will lift these restrictions. If you are an evaluator, and discover that these limitations are preventing or inhibiting your evaluation, contact your Progress Software representative to get a license with expanded capabilities.

Uninstalling Corticon Products

Uninstalling Corticon Studio or Corticon Server results in removing a complete major.minor version of those products, including any service packs or hotfixes applied. It is not possible then to uninstall just a service pack or hotfix.

Uninstalling Corticon Studio

To remove a version of Corticon Studio, do the following:

1. Close Corticon Studio.
2. Choose the **Start** menu **Control Panel** function **Programs and Features**, and then double-click on **Progress Corticon Studio 5.7.x** to launch its uninstaller.

Note: You could initiate the same task directly by navigating to `[CORTICON_HOME]\Uninstall_Progress Corticon Studio 5.7`, and then running `Uninstall Progress Corticon Studio 5.7.exe`.

The installed files in the Studio's `[CORTICON_HOME]` are removed. Files you created (including the complete workspace) are NOT removed or replaced during this process.

If the Uninstaller program is unable to fully remove components (usually because they are open), it will display messages, and might require a reboot to complete the process.

Uninstalling Corticon Server

The Corticon Server components -- Corticon Server for Java, Corticon Server for .NET, and the Corticon Web Console -- use common installation directories. As such, you cannot choose to uninstall just selected components. Uninstallation will remove all installed server components.

To uninstall Corticon Server on Windows:

1. Stop Corticon Server.
2. Backup any files you want to retain.
3. Choose the **Start** menu **Control Panel** function **Programs and Features**, and then double-click on **Progress Corticon Server 5.7.x** to launch its uninstaller.

Note: You could initiate the same task directly by navigating to `[CORTICON_HOME]\Uninstall_Progress Corticon Studio 5.7`, and then running `Uninstall_Progress Corticon Server 5.7.exe`.

To uninstall Corticon Server on Linux:

1. Stop Corticon Server.
2. Backup any files you want to retain.
3. In a command shell, navigate to `[CORTICON_HOME]\Uninstall_Progress Corticon Studio 5.7`, and then run `Uninstall_Progress Corticon Server 5.7.bin`.

The installed files in the Server's `[CORTICON_HOME]` are removed. Note that files you created are NOT removed or replaced during this process. No server files in the `[CORTICON_WORK_DIR]` are removed.

A

Corticon 5.7 Online Tutorials and Documentation

TUTORIALS: Learn about Corticon from online lessons at the [Corticon Learning Center](#).

DOCUMENTATION: About this release	
<i>What's New in Corticon</i> PDF HTML	Describes the enhancements and changes to the product since its last point release.
<i>Corticon Installation Guide</i> PDF HTML	Step-by-step procedures for installing Corticon Studio and Servers in this release on Windows and Linux platforms.

DEVELOPMENT DOCUMENTATION: Define and Model Business Rules	
<i>Rule Modeling Guide</i> PDF HTML	Introduces how business rules are modeled in Corticon Studio including the creation of Vocabularies, Rulesheets, Ruleflows, and Ruletests. This is the starting point for new rule modelers.
<i>Quick Reference Guide</i> PDF HTML	Reference guide to the Corticon Studio user interface, including descriptions of all menu options, buttons, and actions.
<i>Rule Language Guide</i> PDF HTML	Reference information for all operators available in the Corticon Studio Vocabulary.

Guide to Creating Extensions PDF HTML	Detailed technical information about the Corticon extension framework for extended operators and service callouts.
Javadoc for Extensions API HTML	Complete Java API reference for Corticon Extensions.

DEPLOYMENT DOCUMENTATION: Run Decision Services on Servers	
Integration and Deployment Guide PDF HTML	Provides details on deploying and managing Corticon decision services. Start here to learn about the options for deploying Corticon, the best practices for managing your deployment, and the APIs for integrating Corticon with clients executing rules.
Data Integration Guide PDF HTML	Provides details on how to integrate Corticon with external data sources and how to use Corticon for batch rule processing. Includes details on Corticon EDC and ADC features for accessing data from decision services.
Web Console Guide PDF HTML	Presents the Corticon Web Console which can be used to manage your Corticon deployment. This GUI interface simplifies the management and monitoring of Corticon servers and decision services.
Deploying Web Services with Java PDF HTML	Provides details on deploying Corticon as a REST or SOAP web service on Java application servers.
Deploying Web Services with .NET PDF HTML	Provides details on deploying Corticon as a REST or SOAP web service on Microsoft IIS.
Javadoc for Corticon Server API HTML	Complete Java API reference for Corticon Server.