



Installation Guide Hardware LoadMaster

24 July 2024

Copyright

Visit the following page online to see Progress Software Corporation's current Product Documentation Copyright Notice/Trademark Legend: [Product Documentation Copyright Notice & Trademarks | Progress](#)

Table of Contents

Chapter 1: Introduction. 4

Document Purpose. 4

Intended Audience. 5

Prerequisites. 5

Chapter 2: Installing a Hardware LoadMaster. 6

Connect and Power On the Equipment. 6

IPMI / BMC Security Support. 7

Configure Networking. 7

License and Configure the LoadMaster. 9

Chapter 3: References. 13

Introduction

Introduction

There is a variety of hardware LoadMaster models to choose from. For details on each please consult the Progress Kemp website: www.kemptechnologies.com.

Each of the hardware LoadMasters can be installed and licensed in the same way, as described in this document.

Related Links

- [Document Purpose](#)
- [Intended Audience](#)
- [Prerequisites](#)

Document Purpose

Document Purpose

This document outlines how to install a hardware LoadMaster.

Intended Audience

Intended Audience

This document is intended to be read by anyone who is interested in finding out how to install a hardware LoadMaster.

Prerequisites

Prerequisites

The following requirements are needed before installing a hardware LoadMaster:

- A monitor with a standard VGA 15-pin connection
- A USB keyboard or a workstation with a terminal emulator:
 - Speed: 115200
 - Data bits: 8
 - Parity: None
 - Stop bits: 1
 - Flow control: None
- Serial cable (included)

Installing a Hardware LoadMaster

Installing a Hardware LoadMaster

A hardware LoadMaster package includes the following items:

- Hardware LoadMaster appliance
- Power cable
- Serial cable
- Mounting brackets

Related Links

- [Connect and Power On the Equipment](#)
- [IPMI / BMC Security Support](#)
- [Configure Networking](#)
- [License and Configure the LoadMaster](#)

Connect and Power On the Equipment

Connect and Power On the Equipment

To connect and power on the LoadMaster, follow the steps below:

1. Install into a 19-inch rack or another safe location.
2. Connect the Ethernet cable(s) to the port(s) on the LoadMaster.

Note: For single arm setups, the switch only needs to be connected to port 0.

3. Connect a monitor and keyboard to the LoadMaster (or just a serial cable).
4. Connect the power cable to the LoadMaster.
5. Turn on power to the unit.

IPMI / BMC Security Support

IPMI / BMC Security Support

LoadMaster hardware models **LM-X25/LM-X25-NG** and larger capacity models are equipped with a Baseboard Management Controller (BMC) that provides the ability to monitor the hardware configuration using an HTTP-based web interface and through the Intelligent Processor Management Interface (IPMI) command-line interface. Please note the following:

- The BMC is on by default and obtains an IPv4 address using DHCP by default.
- The BMC is delivered with one pre-configured user named “admin”; the password is also set by default, as follows:
 - On newer LoadMaster NG models, the pre-configured password is the serial number of the hardware device.
 - On legacy LoadMaster hardware, the pre-configured password is “admin”.

It is therefore vital to the security of your hardware that you follow these best practices when you connect LoadMaster to the network for the first time:

- Connect the LoadMaster management interface to a secure, internal-only network that is only accessible by trusted personnel.
- Reset the BMC “admin” user password to a strong password that you will remember.

It is also possible to disable access to the IPMI interface entirely.

For further details, refer to the following Knowledge Base article: [IPMI / BMC Support on LoadMaster](#).

Configure Networking

Configure Networking

Note: If you do not have the ability to connect to the LoadMaster using a VGA or serial connection, skip to the [License and Configure the LoadMaster](#) section. The default IP address for the unit is **192.168.1.101**.

Once the LoadMaster is powered on, networking needs to be configured to make the LoadMaster available on your network. To do this, follow the steps below:

1. Log in to the console with the default credentials.

Network Side Interface Address

Please input the IP address of the NETWORK side of the LoadMaster.

device eth0: 10.11.0.125

10.11.0.125/8_

< OK > <Cancel>

Note: The default credentials are below: - Login: **bal** - Password: **1fourall**

2. Enter the **IP address** of the eth0 interface, the network-facing interface of the LoadMaster, in the input field within the **Network Side Interface Address** field and press **Enter** on the keyboard.

Default Gateway

Please enter the IP address of the default gateway.
This must be an IP address on network 10.0.0.0/8.

10.11.0.1

< OK > <Cancel>

3. Enter the IP address of the **Default Gateway**.

Name Server IP Addresses

Please enter a space separated list of nameserver IP addresses

Name servers: 192.168.11.34

192.168.11.34_

< OK > <Cancel>

4. Enter a space-separated list of **nameserver IP addresses**.
5. A message will appear asking to continue licensing using the Web User Interface (WUI). Try to access the IP address using a web browser. Ensure to enter **https://** before the IP address.

Note: Contact the local Progress Kemp Customer Services Representative for further support if needed.

License and Configure the LoadMaster

License and Configure the LoadMaster

Follow the steps below on a computer that is connected to the same network as the LoadMaster:

1. Open a web browser.
2. In the address bar, enter **https://** followed by the LoadMaster IP address, for example **https://192.168.1.1**.
3. A warning may appear regarding website security certificates. Please click the continue/ignore option.
4. The LoadMaster End User License Agreement screen appears.

License Required To Continue

Please select License Method to proceed: Online Licensing ▾

Please enter your Kemp ID and password below to license this LoadMaster.

If you do not have a Kemp ID, please create one by visiting:

<https://kemptechnologies.com/kemp-id-registration>

Kemp ID:

Password:

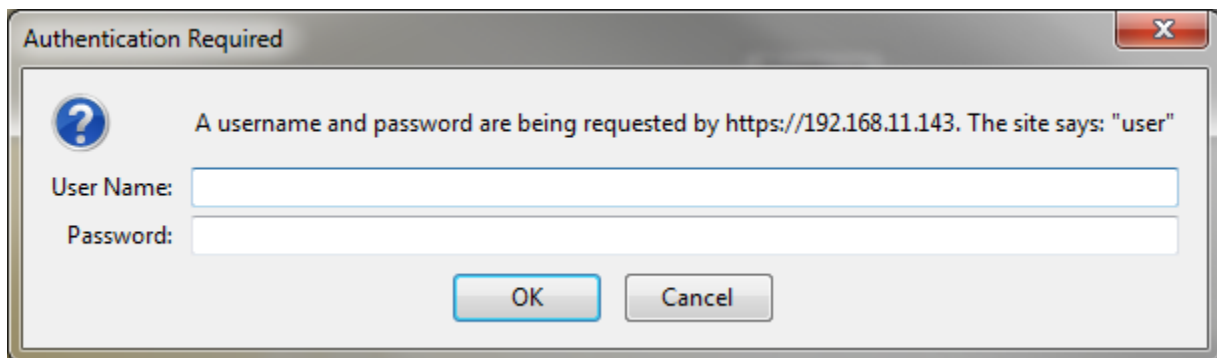
License Now

Order ID# (optional):

HTTP(S) Proxy (optional):

Note: Please read the license agreement and, if willing to accept the conditions therein, click the **Agree** button to proceed.

5. If using the **Online** licensing method, fill out the fields and click **License Now**.



Note: When licensing a hardware box, ensure to not enter an Order ID. Licensing is performed based on the Serial Number entered during pre-provisioning.

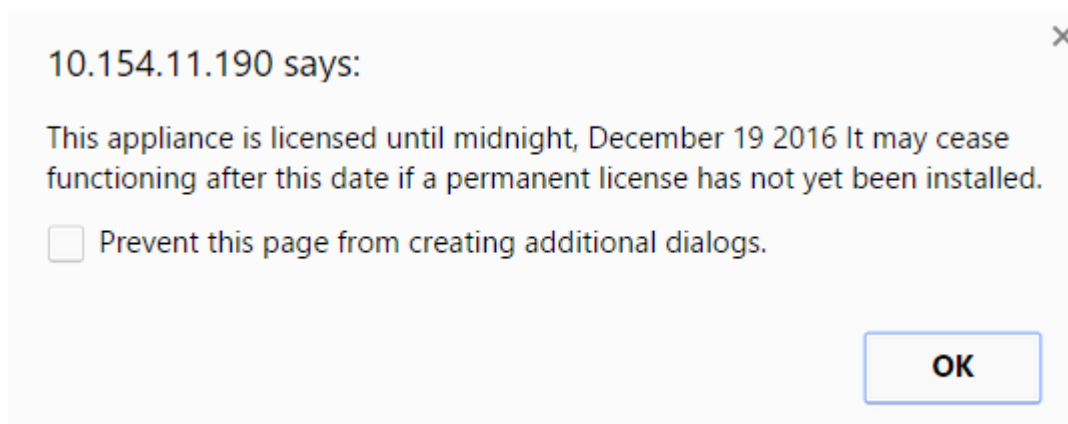
Note: If using the **Offline Licensing** method, select **Offline Licensing**, obtain the license text, paste it into the **License** field and click **Apply License**. For detailed instructions on how to register for a Kemp ID and license the LoadMaster, refer to the [Licensing, Feature Description](#).

6. The **Change Password** screen appears

A Password is required to access the Appliance

Password	<input type="password"/>
Retype Password	<input type="password"/>

7. Enter a password for the **bal** user in the **Password** input field and retype it in the **Retype Password** input field.
8. The login screen appears again, enter the **bal** user name and the new password as defined in the previous step.
9. In the screen informing that the password has changed, click the **Continue** button
10. If the machine has shipped with a temporary license, a warning will appear informing that a temporary license has been installed on the machine and for how long the license is valid.



11. Click **OK**.
12. The **Appliance Vitals** screen of the LoadMaster will appear.

Last Login: Mon Dec 5 13:38:34 UTC 2016 from 10.0.30.86
111 Successful logins in last 30 days

IP address 10.154.11.180
 LoadMaster Version 7.2.37.0.14221.DEV.20161129-1027
 Serial Number 446312
 Boot Time Mon Dec 5 11:32:33 UTC 2016

13. Go to **System Configuration > Network Setup** in the main menu.
14. Click the **eth0** menu option within the **Interfaces** section.

Network Interface 0

Interface Address (address[/prefix])	<input type="text"/>	Set Address
Link Status	Speed: 10000Mb/s, Full Duplex	Automatic Force Link
MTU:	<input type="text" value="1500"/>	Set MTU
Additional addresses (address[/prefix])	<input type="text"/>	Add Address

VLAN Configuration
Interface Bonding

15. In the **Network Interface 0** screen, enter the IP address of the eth0 interface, the network facing interface of the LoadMaster, in the **Interface Address** input field.
16. Click the **Set Address** button.
17. Click the **eth1** menu option within the **Interfaces** section.
18. In the **Network Interface 1** screen, enter the IP address of the eth1 interface, the farm-side interface of the LoadMaster, in the **Interface Address** text box.
19. Click the **Set Address** button.

Note: This interface is optional, depending on the network configuration.

20. In the main menu, go to **System Configuration > Local DNS Configuration > Hostname Configuration** menu option.

Set Hostname

Hostname	<input type="text"/>	Set Hostname
----------	----------------------	---------------------

21. Enter the hostname in the **Current Hostname** text box and click **Set Hostname**.
22. Click the **Set Hostname** button.
23. In the main menu, go to **Local DNS Configuration > DNS Configuration**.

DNS Servers

DNS NameServer (IP Address)

Operation

10.154.75.25	Delete
--------------	--------

Add Nameserver

IP Address Add Search Domain

Domain

24. In the **DNS configuration** screen, enter the IP address(es) of the DNS Server(s) which will be used to resolve names locally on the LoadMaster into the **DNS NameServer** text box.
25. Click **Add**.
26. Enter the domain name that is to be prepended to requests to the DNS nameserver into the **DNS NameServer** text box.
27. Click **Add**.
28. In the main menu, go to **System Configuration > Network Setup > Default Gateway**.

The IPv4 default gateway must be on the 10.154.0.0/16 network

IPv4 Default Gateway Address

29. Enter the IP address of the default gateway in the **IPv4 Default Gateway Address** text box and click **Set IPv4 Default Gateway**.
30. If you have an IPv6 Default Gateway, please enter the value in the **IPv6 Default Gateway Address** text box and click **Set IPv4 Default Gateway**.

The LoadMaster is now fully installed and ready to be used. For further information on how to configure and implement the LoadMaster, such as steps on how to configure High Availability (HA), please refer to the LoadMaster documentation which can be accessed on here: <https://docs.progress.com/>.

References

References

Unless otherwise specified, the following documents can be found at <https://docs.progress.com/>.

Licensing, Feature Description