



Technical Note Bare Metal Boot Options

8 January 2024

Copyright

Visit the following page online to see Progress Software Corporation's current Product Documentation Copyright Notice/Trademark Legend: [Product Documentation Copyright Notice & Trademarks | Progress](#)

Table of Contents

Chapter 1: Introduction. 4

 Document Purpose. 4

 Intended Audience. 5

Chapter 2: Boot Options. 6

 LoadMaster-installation Main Menu. 7

 Run the Bare Metal Compatibility Check. 7

 Select Disk/Partition. 9

Chapter 3: References. 10

Introduction

Introduction

The LoadMaster is supported on a number of bare metal platforms. For further details about the supported platforms, please refer to the Progress Kemp website:

<http://kemptechnologies.com/loadmaster-family-bare-metal-software-load-balancers-application-delivery-controllers/>

Installation files for each of the supported bare metal platforms are available on the Progress Kemp website.

During the LoadMaster bare metal installation, a number of boot options are available such as running a compatibility check and/or selecting the disk/partition.

Related Links

- [Document Purpose](#)
- [Intended Audience](#)

Document Purpose

Document Purpose

This document provides further information on each of the bare metal boot options.

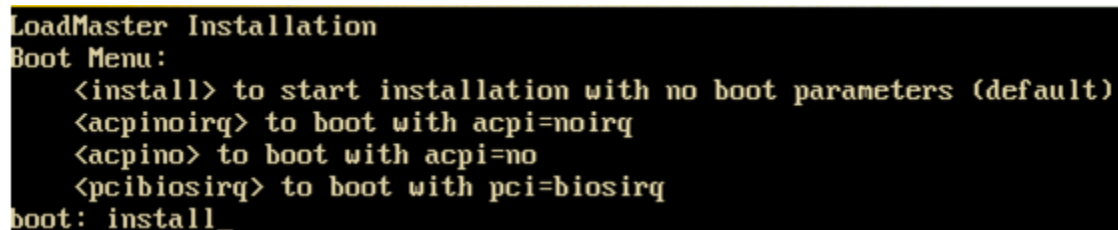
Intended Audience

Intended Audience

This document is intended to be read by anyone who needs to find out further information about the LoadMaster bare metal boot options.

Boot Options

Boot Options



```
LoadMaster Installation
Boot Menu:
  <install> to start installation with no boot parameters (default)
  <acpinoirq> to boot with acpi=noirq
  <acpino> to boot with acpi=no
  <pcibiosirq> to boot with pci=biosirq
boot: install
```

During the bare metal installation, there is a pause which allows you to specify the boot parameters. A number of boot options are available:

- **install** - Start the installation with no boot parameters. This is the default boot option and will be executed if no boot parameters are entered.
- **acpinoirq** - Boot with `acpi=noirq`. This disables PCI Interrupt Request (IRQ) routing in Advanced Configuration and Power Interface (ACPI).
- **acpino** - Boot with `acpi=no`. This disables ACPI.
- **pcibiosirq** - Boot with `pci=biosirq`. This uses PCI BIOS calls to get the interrupt routing table.

To specify the desired boot option, type the parameter value as outlined in bold in the points above. If a boot parameter is mistyped, an error will be displayed.

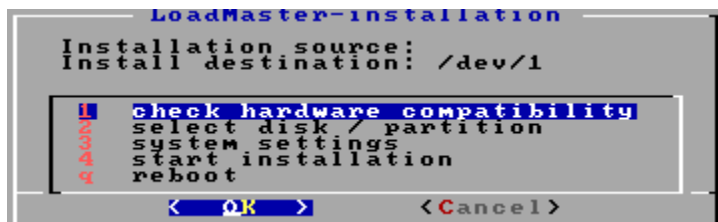
When one of the above boot parameters are specified, the settings will be applied to the LoadMaster Operating System (OS).

Related Links

- [LoadMaster-installation Main Menu](#)

LoadMaster-installation Main Menu

LoadMaster-installation Main Menu



Regardless of what boot parameters are specified, the **LoadMaster-installation** main menu will be displayed. This menu has the following options:

- Check hardware compatibility - Refer to the [Run the Bare Metal Compatibility Check](#) section for further information on this option.
- Select disk/partition - Refer to the [Select Disk/Partition](#) section for further information on this option.

Note: It is best practice to select a disk/partition before starting the installation.

- System settings - Please do not use this option.
- Start installation - Begin the LoadMaster installation.
- Reboot - Reboot the machine.

Select the relevant option either by using the arrow keys, or entering the corresponding number/letter. Then, press the return key to proceed.

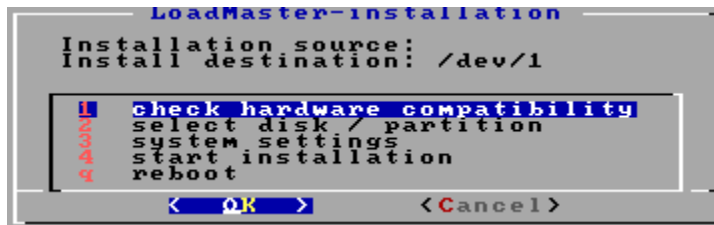
Related Links

- [Run the Bare Metal Compatibility Check](#)
- [Select Disk/Partition](#)

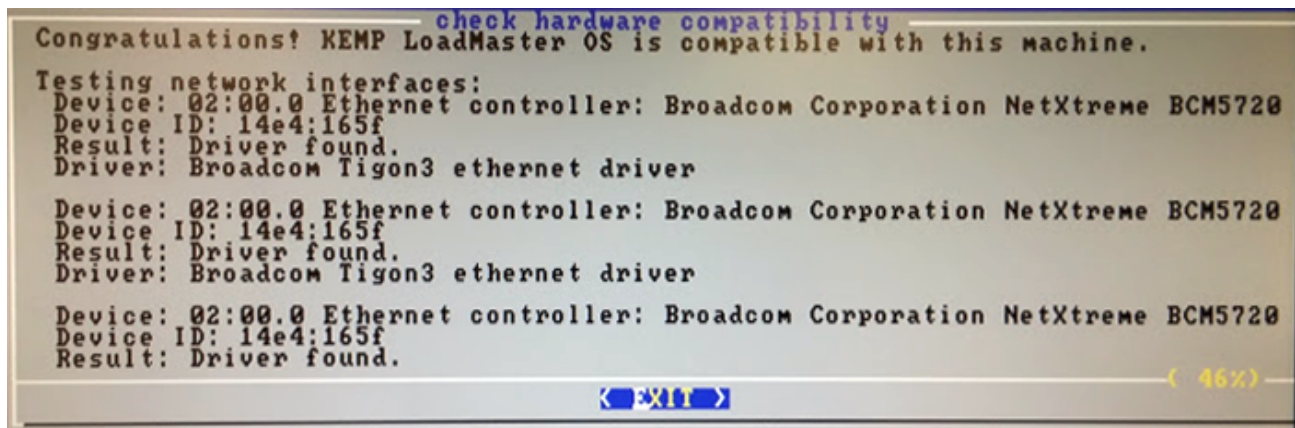
Run the Bare Metal Compatibility Check

Run the Bare Metal Compatibility Check

It is possible to run a compatibility check to ensure that the user's hardware configuration (including network interfaces and storage controllers) is compatible with the LoadMaster OS.



To run the check, select **check hardware compatibility** and press **OK**.



The results of the compatibility check will be displayed. There are two possible messages:

- **Success:** Congratulations! LoadMaster OS is compatible with this machine. This means that the installation can continue. Press return on the keyboard to exit the results screen and return to the **LoadMaster-installation** main menu. Select **start installation** to begin the LoadMaster installation. Refer to the relevant Installation Guide on the Progress Kemp documentation page for further steps on initially configuring the LoadMaster: <https://docs.progress.com/> Refer to the [Licensing, Feature Description](#) document for instructions on how to license the LoadMaster.
- **Fail:** The LoadMaster OS is not compatible with this machine. Press return to exit the results screen and return to the **LoadMaster-installation** main menu. Please consult the Progress Kemp website for more details on hardware compatibility.

If the check fails, the installation will not work. If desired, please contact a Progress Kemp representative with the details from the hardware compatibility check to discuss compatibility.

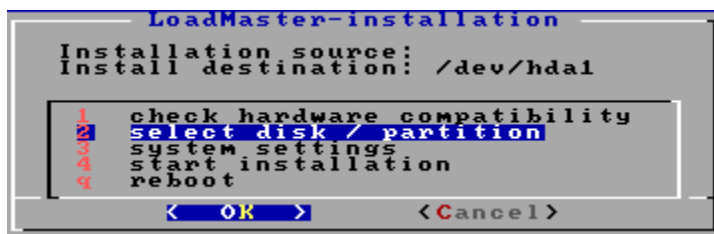
For a list of server platforms and hardware devices supported by the LoadMaster OS, refer to the LoadMaster - Bare Metal Hardware Compatibility list:

<http://kemptechnologies.com/loadmaster-hardware-compatability-list>

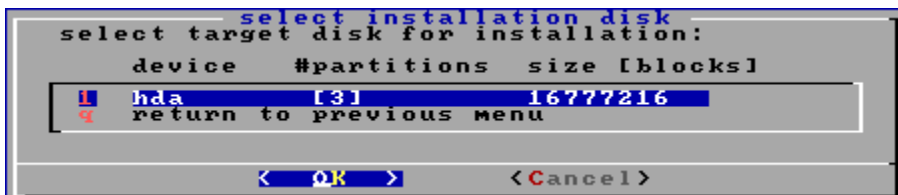
Select Disk/Partition

Select Disk/Partition

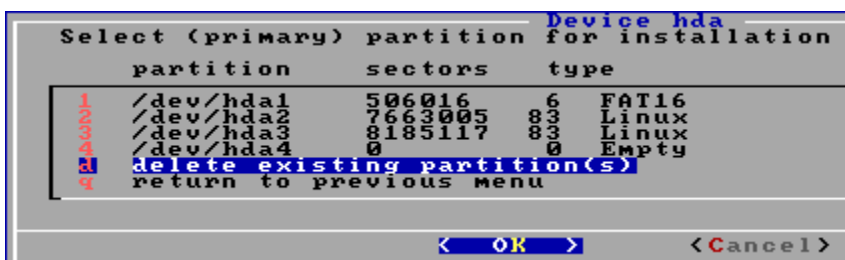
The recommended best practice is to select the disk, delete all existing partitions and then start the installation. To do this, complete the following steps:



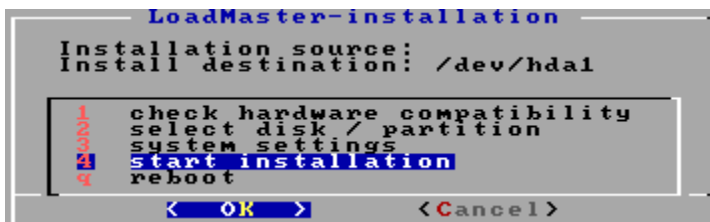
1. Select select disk/partition and press **OK**.



2. Select the target disk for installation and press **OK**.



3. Select delete existing partition(s) and press **OK**.



4. Select start installation and press **OK**.

References

References

Useful links are provided below.

The LoadMaster Family of Bare Metal Load Balancers & ADCs

<http://kemptechnologies.com/loadmaster-family-bare-metal-software-load-balancers-application-delivery-controllers/>

LoadMaster - Bare Metal Hardware Compatibility list

<http://kemptechnologies.com/loadmaster-hardware-compatibility-list>

Licensing, Feature Description

<https://docs.progress.com/>