



Configuring DSR

Technical Note

UPDATED: 28 July 2023

© 2022 Progress Software Corporation and/or one of its subsidiaries or affiliates. All rights reserved.

These materials and all Progress® software products are copyrighted and all rights are reserved by Progress Software Corporation. The information in these materials is subject to change without notice, and Progress Software Corporation assumes no responsibility for any errors that may appear therein. The references in these materials to specific platforms supported are subject to change.

#1 Load Balancer in Price/Performance, 360 Central, 360 Vision, Chef, Chef (and design), Chef Habitat, Chef Infra, Code Can (and design), Compliance at Velocity, Corticon, Corticon.js, DataDirect (and design), DataDirect Cloud, DataDirect Connect, DataDirect Connect64, DataDirect XML Converters, DataDirect XQuery, DataRPM, Defrag This, Deliver More Than Expected, DevReach (and design), Driving Network Visibility, Flowmon, Inspec, Ipswitch, iMacros, K (stylized), Kemp, Kemp (and design), Kendo UI, Kinvey, LoadMaster, MessageWay, MOVEit, NativeChat, OpenEdge, Powered by Chef, Powered by Progress, Progress, Progress Software Developers Network, SequeLink, Sitefinity (and Design), Sitefinity, Sitefinity (and design), Sitefinity Insight, SpeedScript, Stylized Design (Arrow/3D Box logo), Stylized Design (C Chef logo), Stylized Design of Samurai, TeamPulse, Telerik, Telerik (and design), Test Studio, WebSpeed, WhatsConfigured, WhatsConnected, WhatsUp, and WS_FTP are registered trademarks of Progress Software Corporation or one of its affiliates or subsidiaries in the U.S. and/or other countries.

Analytics360, AppServer, BusinessEdge, Chef Automate, Chef Compliance, Chef Desktop, Chef Workstation, Corticon Rules, Data Access, DataDirect Autonomous REST Connector, DataDirect Spy, DevCraft, Fiddler, Fiddler Classic, Fiddler Everywhere, Fiddler Jam, FiddlerCap, FiddlerCore, FiddlerScript, Hybrid Data Pipeline, iMail, InstaRelinker, JustAssembly, JustDecompile, JustMock, KendoReact, OpenAccess, PASOE, Pro2, ProDataSet, Progress Results, Progress Software, ProVision, PSE Pro, Push Jobs, SafeSpaceVR, Sitefinity Cloud, Sitefinity CMS, Sitefinity Digital Experience Cloud, Sitefinity Feather, Sitefinity Thunder, SmartBrowser, SmartComponent, SmartDataBrowser, SmartDataObjects, SmartDataView, SmartDialog, SmartFolder, SmartFrame, SmartObjects, SmartPanel, SmartQuery, SmartViewer, SmartWindow, Supermarket, SupportLink, Unite UX, and WebClient are trademarks or service marks of Progress Software Corporation and/or its subsidiaries or affiliates in the U.S. and other countries. Java is a registered trademark of Oracle and/or its affiliates. Any other marks contained herein may be trademarks of their respective owners.

Please refer to the NOTICE.txt or Release Notes – Third-Party Acknowledgements file applicable to a particular Progress product/hosted service offering release for any related required third-party acknowledgements.

Table of Contents

1 Introduction	4
2 Configuring a VIP on the loopback interface on Linux	5
3 DSR Configuration on Windows	7
3.1 Add a loopback interface on Windows Server 2012, 2016 and 2019	7
3.1.1 Loopback Adapter Configuration for IPv6	15
References	16
Web User Interface (WUI), Configuration Guide	16
Last Updated Date	17

1 Introduction

Direct Server Return (DSR) is a method whereby traffic hits the LoadMaster on the way in and bypasses the LoadMaster on the way out.

The primary advantage of DSR is that the LoadMaster only handles a portion of the work associated with load balancing, specifically the inbound traffic. The servers respond directly to the clients, bypassing the LoadMaster on the way out.

If the particular traffic profile for a site is for every packet in, eight packets are sent out, this would result in the LoadMaster handling around 87% less traffic than it would without DSR.

For DSR to work, the Virtual IP (VIP) address on a Real Server must be configured so that the server does not respond to ARP requests on the VIP address.

For Linux with a recent 2.4 kernel, this can be done by creating the VIP as an IP alias on the loopback interface. On Windows this involves creating a loopback adapter with specific configuration parameters. Refer to the **Configuring a VIP on the loopback interface on Linux** and **DSR Configuration on Windows** sections for detailed steps on how to do this in both operating systems.

When you create the Virtual Service, enable **Force L4 in Standard Options** and select **Direct return** as the **Forwarding method** when adding the Real Server. This means that the LoadMaster just routes the packets from a client to a Real Server without modifying the IP addresses. The Real Server accepts requests for the VIP destination address because it has configured the VIP as an IP alias. The Real Server will then reply to the IP address of the requesting client with the source IP address of the reply set to the VIP.

The table below shows an example of DSR steps.

Step	Source IP	Destination IP	MAC Address
1	216.139.43.10	195.30.70.200	Dest.: 00:00:00:00:00:aa
2	216.139.43.10	195.30.70.200	Dest.: 00:00:00:00:00:bb
3	195.30.70.200	216.139.43.10	Source: 00:00:00:00:00:bb

2 Configuring a VIP on the loopback interface on Linux

On a linux machine, the “ifconfig -a” command will look something like this:

```
root@RS1 $ ifconfig -a

eth0 Link encap:Ethernet HWaddr 00:00:00:00:00:bb inet addr: 195.30.70.11 Bcast:
195.30.70.255 Mask:255.255.255.0

UP BROADCAST RUNNING MULTICAST MTU:1500 Metric:1 RX packets:96561817 errors:526
dropped:0 overruns:5 frame:0 TX
packets:97174301 errors:0 dropped:0 overruns:0 carrier:0 collisions:0 txqueuelen:100
Interrupt:10 Base address:0x4000

lo Link encap:Local Loopback inet addr:127.0.0.1 Mask:255.0.0.0 UP LOOPBACK RUNNING
MTU:3924 Metric:1 RX packets:3985923
errors:0 dropped:0 overruns:0 frame:0 TX packets:3985923 errors:0 dropped:0 overruns:0
carrier:0 collisions:0 txqueuelen:0
```

To create an additional loopback interface with an IP alias, use the “ifconfig” command like this:

```
root@RS1 $ ifconfig lo:1 <VirtualServiceIPAddress> broadcast 195.30.70.200 netmask
255.255.255.255

root@RS1 $ ifconfig lo:1

lo:1 Link encap:Local Loopback inet addr:195.30.70.200 Mask:255.255.255.255 UP
LOOPBACK RUNNING MTU:3924 Metric:1
```

If the machine reboots, this configuration will no longer be available. To set this permanently, some Linux configuration files need to be edited. Steps on how to do this vary from distribution to distribution.

The next step is to disable invalid ARP replies. Add the following to the /etc/sysctl.conf file:

```
net.ipv4.conf.all.arp_ignore=1
```

2 Configuring a VIP on the loopback interface on Linux

```
net.ipv4.conf.eth0.arp_ignore=1  
net.ipv4.conf.eth1.arp_ignore=1  
net.ipv4.conf.all.arp_announce=2  
net.ipv4.conf.eth0.arp_announce=2  
net.ipv4.conf.eth1.arp_announce=2
```

3 DSR Configuration on Windows

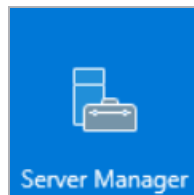
For Windows, it is typically best to use the loopback address. However, to use the loopback address, the loopback adapter needs to be added first. To add the loopback adapter for the relevant version of Windows and to configure the VIP of the loopback interface, follow the instructions in the **Add a loopback interface on Windows Server 2012, 2016 and 2019** section.

1.

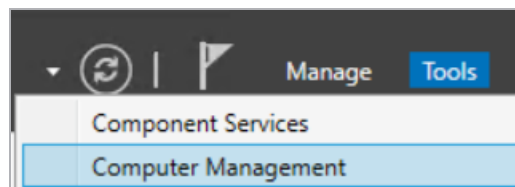
3.1 Add a loopback interface on Windows Server 2012, 2016 and 2019

To add a loopback adapter on Windows Server 2012, 2016 and 2019, follow the steps below:

1. Click **Start** and select **Server Manager**.

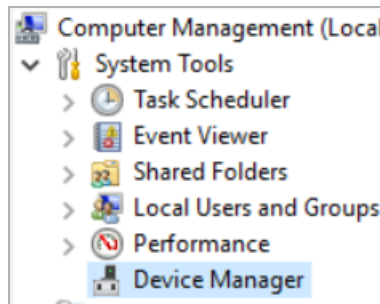


2. Click **Tools** and select **Computer Management**.

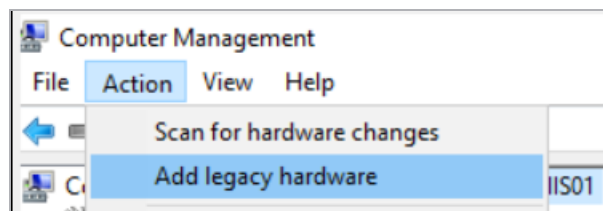


3. Click **Device Manager**.

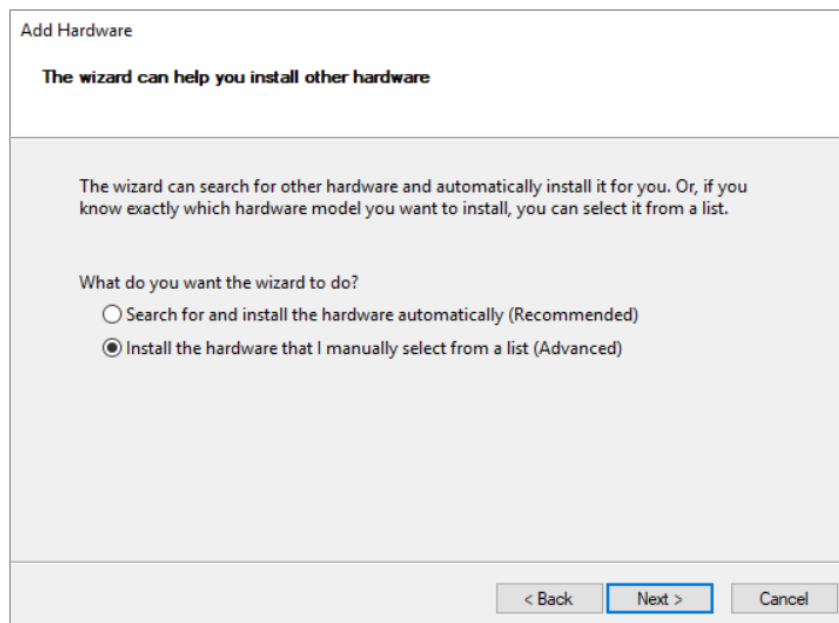
3 DSR Configuration on Windows



4. Click the computer name, click **Action** from the top menu bar and select **Add Legacy Hardware**.



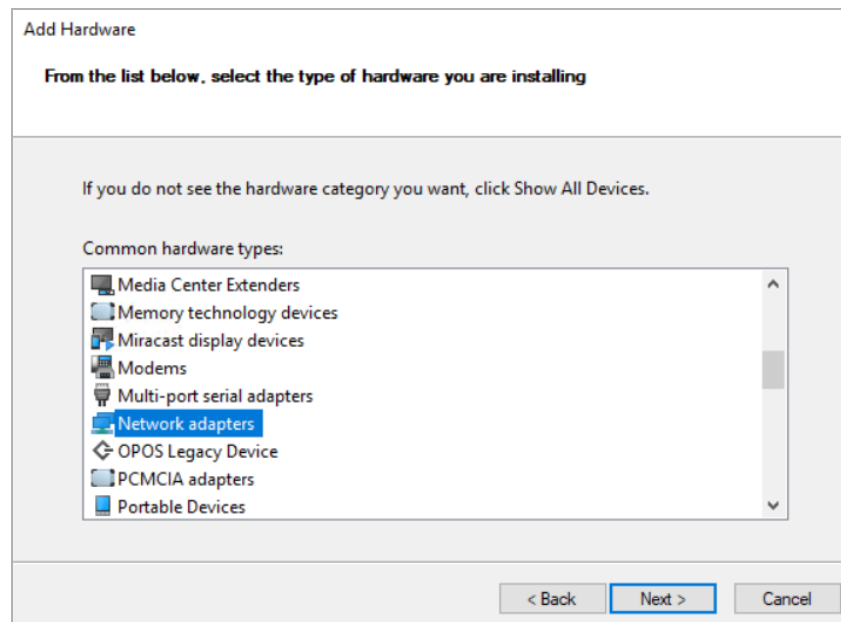
5. Click **Next**.



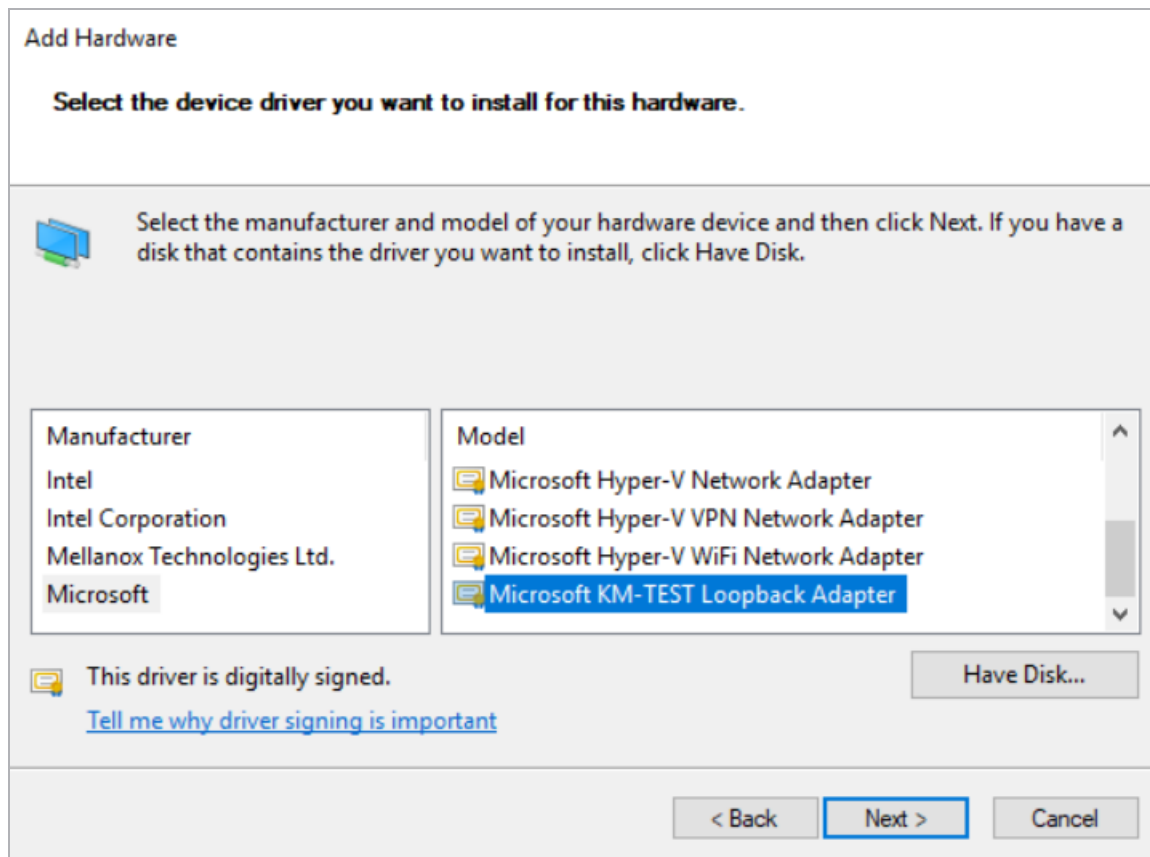
6. Select **Install the hardware that I manually select from a list (Advanced)**.

7. Click **Next**.

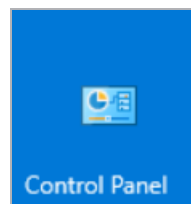
3 DSR Configuration on Windows



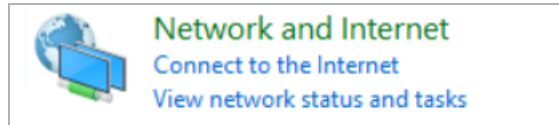
8. Select **Network adapters**.
9. Click **Next**.
10. Select **Microsoft** on the left.



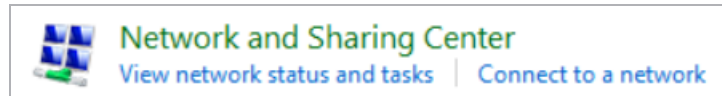
11. Select **Microsoft KM-TEST Loopback Adapter** on the right.
12. Click **Next**.
13. Click **Next** again.
14. Click **Finish**.
15. Click **Start** and select **Control Panel**.



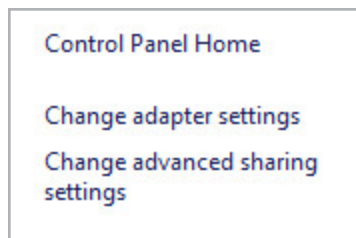
16. Click **Network and Internet**.



17. Click **Network and Sharing Center**.



18. Click **Change adapter settings**.

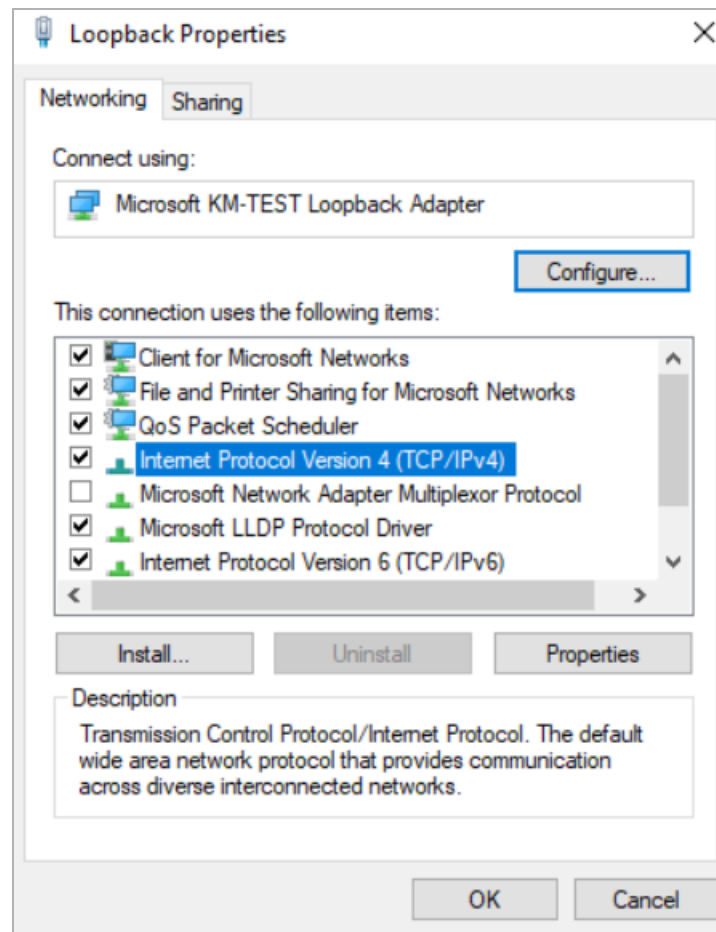


It is a good idea to rename the adapters so that they are distinguishable, for example; rename the new adapter to **loopback** and the real network adapter to **network**.

19. Configure the loopback adapter with the Virtual Service IP.

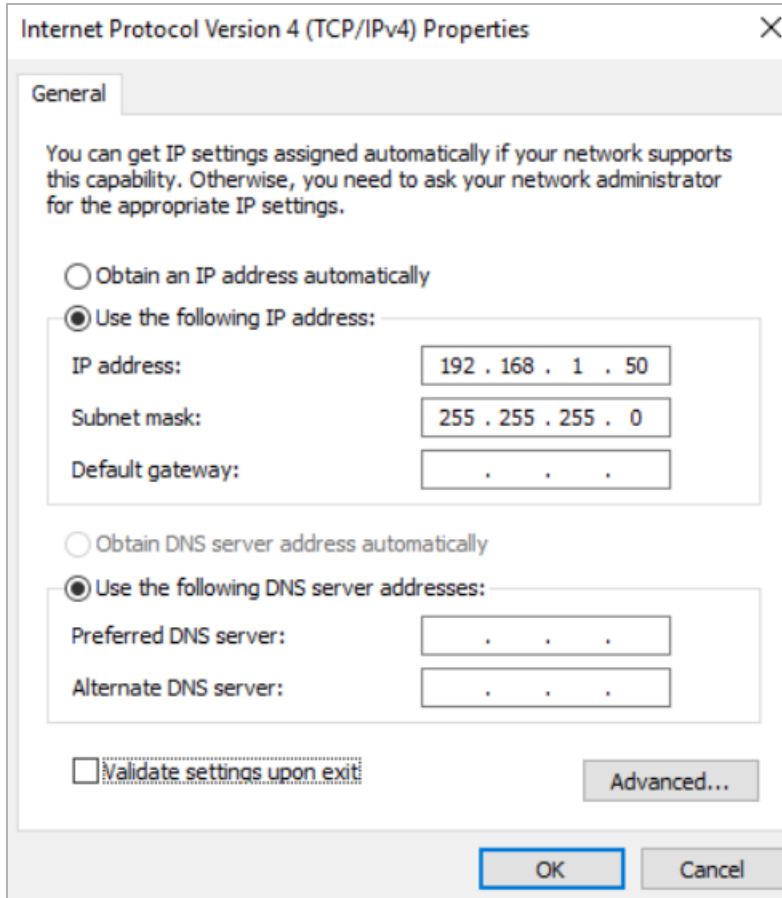
a) Right-click the loopback interface and select **Properties**.

3 DSR Configuration on Windows



b) Select **Internet Protocol Version 4 (TCP/IP)** and click **Properties**.

3 DSR Configuration on Windows



Internet Protocol Version 4 (TCP/IPv4) Properties

General

You can get IP settings assigned automatically if your network supports this capability. Otherwise, you need to ask your network administrator for the appropriate IP settings.

☐ Obtain an IP address automatically

☒ Use the following IP address:

IP address: 192 . 168 . 1 . 50

Subnet mask: 255 . 255 . 255 . 0

Default gateway: . . .

☐ Obtain DNS server address automatically

☒ Use the following DNS server addresses:

Preferred DNS server: . . .

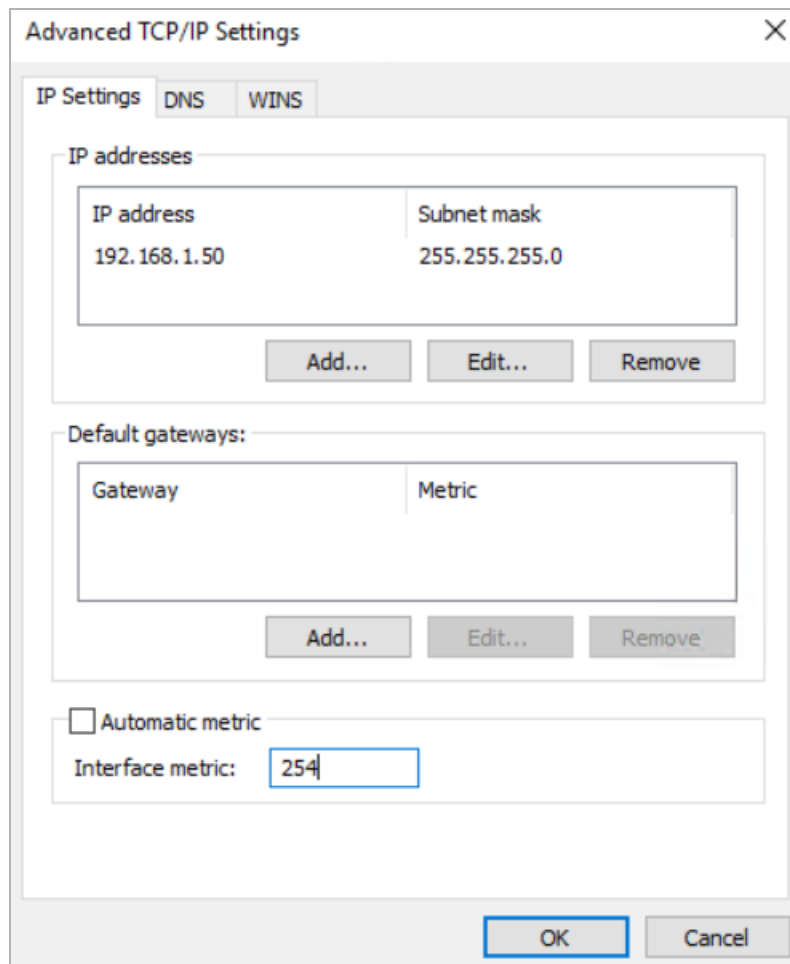
Alternate DNS server: . . .

☐ Validate settings upon exit

Advanced...

OK Cancel

c) The TCP/IP properties window will appear. This is where the Virtual Service **IP address** can be configured. Enter the Virtual Service **IP address** and click **Advanced...**



d) In Advanced TCP/IP Settings, remove the check from the **Automatic metric** checkbox.

e) Enter **254** in the **Interface metric** text box.

Setting the **Interface metric** is an important step. This will disable this server so that it will not respond to ARP requests for the MAC address for the Virtual Service IP.

f) Click **OK** to activate the change.

g) Click **OK** and **Close**.

Ensure the “network” adapter is the actual network adapter that will send and receive traffic.

20. On the Windows command line, run the following commands:

```
netsh interface ipv4 set interface "network" weakhostreceive=enabled  
netsh interface ipv4 set interface "loopback" weakhostreceive=enabled  
netsh interface ipv4 set interface "loopback" weakhostsend=enabled
```

3.1.1 Loopback Adapter Configuration for IPv6

On the Windows command line, run the following commands:

- netsh interface ipv6 set interface LAN weakhostreceive=enabled
- netsh interface *ipv6 *set interface Kemp-SMTP-LOOPBACK weakhostreceive=enabled
- netsh interface *ipv6 *set interface Kemp-SMTP-LOOPBACK weakhostsend=enabled

In the loopback adapter properties:

- **IPv6 address:** *<IPAddressOf TheVIP>*
- **Subnet prefix length:** 128

In Advanced Properties, set the **Interface metric** to **254**.

If you want IPv6 DSR, you must have the IPv6 address as the primary address on the interface. Additional addresses may be IPv6 or IPv4, as required.

References

Unless otherwise specified, the following documents can be found at <http://kemptechnologies.com/documentation>.

Web User Interface (WUI), Configuration Guide

Last Updated Date

This document was last updated on 28 July 2023.