



Bare Metal Boot Options

Technical Note

UPDATED: 28 July 2023

© 2022 Progress Software Corporation and/or one of its subsidiaries or affiliates. All rights reserved.

These materials and all Progress® software products are copyrighted and all rights are reserved by Progress Software Corporation. The information in these materials is subject to change without notice, and Progress Software Corporation assumes no responsibility for any errors that may appear therein. The references in these materials to specific platforms supported are subject to change.

#1 Load Balancer in Price/Performance, 360 Central, 360 Vision, Chef, Chef (and design), Chef Habitat, Chef Infra, Code Can (and design), Compliance at Velocity, Corticon, Corticon.js, DataDirect (and design), DataDirect Cloud, DataDirect Connect, DataDirect Connect64, DataDirect XML Converters, DataDirect XQuery, DataRPM, Defrag This, Deliver More Than Expected, DevReach (and design), Driving Network Visibility, Flowmon, Inspec, Ipswitch, iMacros, K (stylized), Kemp, Kemp (and design), Kendo UI, Kinvey, LoadMaster, MessageWay, MOVEit, NativeChat, OpenEdge, Powered by Chef, Powered by Progress, Progress, Progress Software Developers Network, SequeLink, Sitefinity (and Design), Sitefinity, Sitefinity (and design), Sitefinity Insight, SpeedScript, Stylized Design (Arrow/3D Box logo), Stylized Design (C Chef logo), Stylized Design of Samurai, TeamPulse, Telerik, Telerik (and design), Test Studio, WebSpeed, WhatsConfigured, WhatsConnected, WhatsUp, and WS_FTP are registered trademarks of Progress Software Corporation or one of its affiliates or subsidiaries in the U.S. and/or other countries.

Analytics360, AppServer, BusinessEdge, Chef Automate, Chef Compliance, Chef Desktop, Chef Workstation, Corticon Rules, Data Access, DataDirect Autonomous REST Connector, DataDirect Spy, DevCraft, Fiddler, Fiddler Classic, Fiddler Everywhere, Fiddler Jam, FiddlerCap, FiddlerCore, FiddlerScript, Hybrid Data Pipeline, iMail, InstaRelinker, JustAssembly, JustDecompile, JustMock, KendoReact, OpenAccess, PASOE, Pro2, ProDataSet, Progress Results, Progress Software, ProVision, PSE Pro, Push Jobs, SafeSpaceVR, Sitefinity Cloud, Sitefinity CMS, Sitefinity Digital Experience Cloud, Sitefinity Feather, Sitefinity Thunder, SmartBrowser, SmartComponent, SmartDataBrowser, SmartDataObjects, SmartDataView, SmartDialog, SmartFolder, SmartFrame, SmartObjects, SmartPanel, SmartQuery, SmartViewer, SmartWindow, Supermarket, SupportLink, Unite UX, and WebClient are trademarks or service marks of Progress Software Corporation and/or its subsidiaries or affiliates in the U.S. and other countries. Java is a registered trademark of Oracle and/or its affiliates. Any other marks contained herein may be trademarks of their respective owners.

Please refer to the NOTICE.txt or Release Notes – Third-Party Acknowledgements file applicable to a particular Progress product/hosted service offering release for any related required third-party acknowledgements.

Table of Contents

1 Introduction	4
1.1 Document Purpose	4
1.2 Intended Audience	4
2 Boot Options	5
2.1 LoadMaster-installation Main Menu	5
2.1.1 Run the Bare Metal Compatibility Check	6
2.1.2 Select Disk/Partition	7
References	9
The LoadMaster Family of Bare Metal Load Balancers & ADCs	9
Kemp LoadMaster - Bare Metal Hardware Compatibility list	9
Licensing, Feature Description	9
Last Updated Date	10

1 Introduction

The Kemp LoadMaster is supported on a number of bare metal platforms. For further details about the supported platforms, please refer to the Kemp website:

<http://kemptechnologies.com/loadmaster-family-bare-metal-software-load-balancers-application-delivery-controllers/>

Installation files for each of the supported bare metal platforms are available on the Kemp website.

During the Kemp LoadMaster bare metal installation, a number of boot options are available such as running a compatibility check and/or selecting the disk/partition.

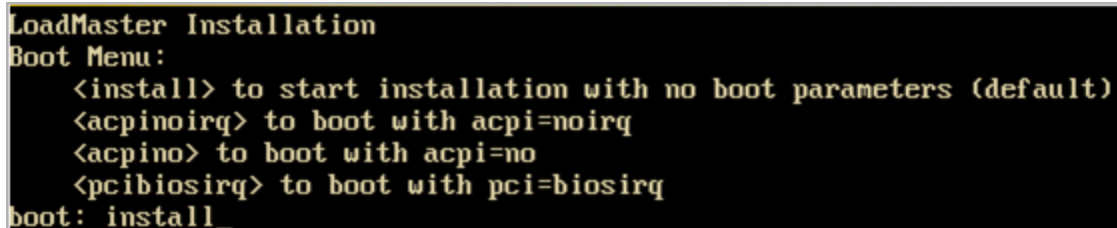
1.1 Document Purpose

This document provides further information on each of the bare metal boot options.

1.2 Intended Audience

This document is intended to be read by anyone who needs to find out further information about the Kemp LoadMaster bare metal boot options.

2 Boot Options



```
LoadMaster Installation
Boot Menu:
  <install> to start installation with no boot parameters (default)
  <acpinoirq> to boot with acpi=noirq
  <acpino> to boot with acpi=no
  <pcibiosirq> to boot with pci=biosirq
boot: install_
```

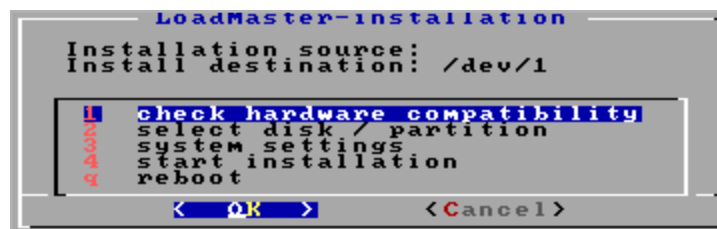
During the bare metal installation, there is a pause which allows you to specify the boot parameters. A number of boot options are available:

- **install** - Start the installation with no boot parameters. This is the default boot option and will be executed if no boot parameters are entered.
- **acpinoirq** - Boot with acpi=noirq. This disables PCI Interrupt Request (IRQ) routing in Advanced Configuration and Power Interface (ACPI).
- **acpino** - Boot with acpi=no. This disables ACPI.
- **pcibiosirq** - Boot with pci=biosirq. This uses PCI BIOS calls to get the interrupt routing table.

To specify the desired boot option, type the parameter value as outlined in bold in the points above. If a boot parameter is mistyped, an error will be displayed.

When one of the above boot parameters are specified, the settings will be applied to the LoadMaster Operating System (OS).

2.1 LoadMaster-installation Main Menu



Regardless of what boot parameters are specified, the **LoadMaster-installation** main menu will be displayed. This menu has the following options:

2 Boot Options

- Check hardware compatibility - Refer to the **Run the Bare Metal Compatibility Check** section for further information on this option.
- Select disk/partition - Refer to the **Select Disk/Partition** section for further information on this option.

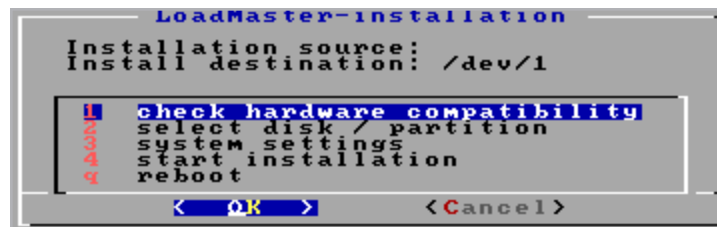
It is best practice to select a disk/partition before starting the installation.

- System settings - Please do not use this option.
- Start installation - Begin the LoadMaster installation.
- Reboot - Reboot the machine.

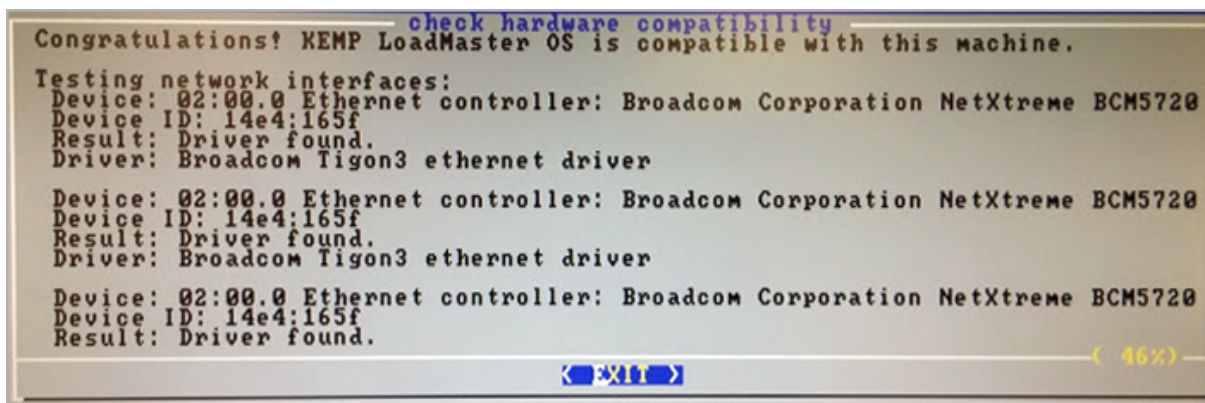
Select the relevant option either by using the arrow keys, or entering the corresponding number/letter. Then, press the return key to proceed.

2.1.1 Run the Bare Metal Compatibility Check

It is possible to run a compatibility check to ensure that the user's hardware configuration (including network interfaces and storage controllers) is compatible with the Kemp LoadMaster OS.



To run the check, select **check hardware compatibility** and press **OK**.





The results of the compatibility check will be displayed. There are two possible messages:

- Success:** Congratulations! Kemp LoadMaster OS is compatible with this machine. This means that the installation can continue. Press return on the keyboard to exit the results screen and return to the **LoadMaster-installation** main menu. Select **start installation** to begin the LoadMaster installation.
 Refer to the relevant Installation Guide on the Kemp documentation page for further steps on initially configuring the LoadMaster: <http://kemptechnologies.com/documentation>
 Refer to the [Licensing, Feature Description](#) document for instructions on how to license the LoadMaster.
- Fail:** The Kemp LoadMaster OS is not compatible with this machine. Press return to exit the results screen and return to the **LoadMaster-installation** main menu.
 Please consult the Kemp website for more details on hardware compatibility.

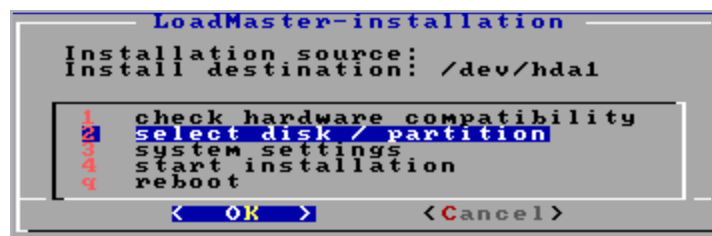
If the check fails, the installation will not work. If desired, please contact a Kemp representative with the details from the hardware compatibility check to discuss compatibility.

For a list of server platforms and hardware devices supported by the LoadMaster OS, refer to the Kemp LoadMaster - Bare Metal Hardware Compatibility list:

<http://kemptechnologies.com/loadmaster-hardware-compatibility-list>

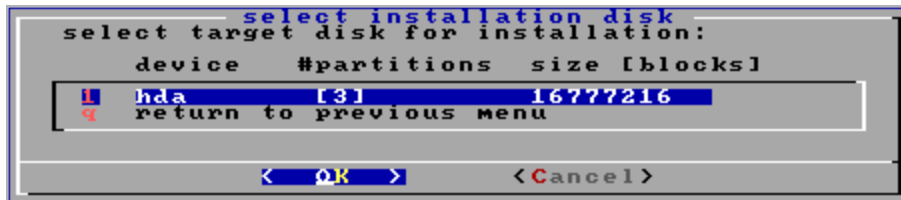
2.1.2 Select Disk/Partition

The recommended best practice is to select the disk, delete all existing partitions and then start the installation. To do this, complete the following steps:



2 Boot Options

1. Select select disk/partition and press **OK**.



2. Select the target disk for installation and press **OK**.



3. Select delete existing partition(s) and press **OK**.



4. Select start installation and press **OK**.

References

Useful links are provided below.

The LoadMaster Family of Bare Metal Load Balancers & ADCs

<http://kemptechnologies.com/loadmaster-family-bare-metal-software-load-balancers-application-delivery-controllers/>

Kemp LoadMaster - Bare Metal Hardware Compatibility list

<http://kemptechnologies.com/loadmaster-hardware-compatibility-list>

Licensing, Feature Description

<http://kemptechnologies.com/documentation>

Last Updated Date

This document was last updated on 28 July 2023.