



Dell R-Series

Installation Guide

UPDATED: 28 July 2023

© 2022 Progress Software Corporation and/or one of its subsidiaries or affiliates. All rights reserved.

These materials and all Progress® software products are copyrighted and all rights are reserved by Progress Software Corporation. The information in these materials is subject to change without notice, and Progress Software Corporation assumes no responsibility for any errors that may appear therein. The references in these materials to specific platforms supported are subject to change.

#1 Load Balancer in Price/Performance, 360 Central, 360 Vision, Chef, Chef (and design), Chef Habitat, Chef Infra, Code Can (and design), Compliance at Velocity, Corticon, Corticon.js, DataDirect (and design), DataDirect Cloud, DataDirect Connect, DataDirect Connect64, DataDirect XML Converters, DataDirect XQuery, DataRPM, Defrag This, Deliver More Than Expected, DevReach (and design), Driving Network Visibility, Flowmon, Inspec, Ipswitch, iMacros, K (stylized), Kemp, Kemp (and design), Kendo UI, Kinvey, LoadMaster, MessageWay, MOVEit, NativeChat, OpenEdge, Powered by Chef, Powered by Progress, Progress, Progress Software Developers Network, SequeLink, Sitefinity (and Design), Sitefinity, Sitefinity (and design), Sitefinity Insight, SpeedScript, Stylized Design (Arrow/3D Box logo), Stylized Design (C Chef logo), Stylized Design of Samurai, TeamPulse, Telerik, Telerik (and design), Test Studio, WebSpeed, WhatsConfigured, WhatsConnected, WhatsUp, and WS_FTP are registered trademarks of Progress Software Corporation or one of its affiliates or subsidiaries in the U.S. and/or other countries.

Analytics360, AppServer, BusinessEdge, Chef Automate, Chef Compliance, Chef Desktop, Chef Workstation, Corticon Rules, Data Access, DataDirect Autonomous REST Connector, DataDirect Spy, DevCraft, Fiddler, Fiddler Classic, Fiddler Everywhere, Fiddler Jam, FiddlerCap, FiddlerCore, FiddlerScript, Hybrid Data Pipeline, iMail, InstaRelinker, JustAssembly, JustDecompile, JustMock, KendoReact, OpenAccess, PASOE, Pro2, ProDataSet, Progress Results, Progress Software, ProVision, PSE Pro, Push Jobs, SafeSpaceVR, Sitefinity Cloud, Sitefinity CMS, Sitefinity Digital Experience Cloud, Sitefinity Feather, Sitefinity Thunder, SmartBrowser, SmartComponent, SmartDataBrowser, SmartDataObjects, SmartDataView, SmartDialog, SmartFolder, SmartFrame, SmartObjects, SmartPanel, SmartQuery, SmartViewer, SmartWindow, Supermarket, SupportLink, Unite UX, and WebClient are trademarks or service marks of Progress Software Corporation and/or its subsidiaries or affiliates in the U.S. and other countries. Java is a registered trademark of Oracle and/or its affiliates. Any other marks contained herein may be trademarks of their respective owners.

Please refer to the NOTICE.txt or Release Notes – Third-Party Acknowledgements file applicable to a particular Progress product/hosted service offering release for any related required third-party acknowledgements.

Table of Contents

1 Introduction	4
2 Connect the Dell R-Series	5
2.1 Install the LoadMaster	5
2.2 Boot the Installed LoadMaster	7
2.3 License and Configure the LoadMaster	7
2.4 Update from Temporary to Permanent License	12
3 Configuring the LoadMaster Using the Console	13
4 The iDRAC Module	15
4.1 Configure the iDRAC Module	15
4.2 Restore Functionality Using the iDRAC Module	20
References	26
WUI, Configuration Guide	26
Licensing, Feature Description	26
Kemp LoadMaster, Product Overview	26
Bare Metal Boot Options, Technical Note	26
Last Updated Date	27

1 Introduction

The Kemp LoadMaster is a purpose-built, hardware load balancing and Application Delivery Controller (ADC).

The LoadMaster enables data center clusters which power Internet sites and large intranets to intelligently and efficiently distribute network traffic among web and application servers. A resource optimization layer in front of applications and infrastructure servers gives IT administrators greater control to adapt to network changes and enable the best network and infrastructure performance.

The LoadMaster delivers on these requirements through the inclusion of the latest advancements in Layer 4 and 7 load balancing, content switching, SSL acceleration, Layer 7 content switching, caching, compression, Intrusion Prevention System (IPS), IP and Layer 7 persistence. All Kemp load balancers are optimized for a broad range of IP applications including core Microsoft Enterprise workloads such as Exchange, Lync, SharePoint, RDS and Dynamics.

2 Connect the Dell R-Series

To connect the Dell R-Series, follow the steps below:

1. Install the Dell R-Series into a 19 inch rack or another safe location.
2. Connect Ethernet cables to the ports on the Dell R-Series. Please use the worksheet included in the pack to determine which ports to connect. For single-arm setups, the switch only needs to be connected to port 0 (or eth0). You can configure multiple arm setups using the console or Web User Interface (WUI) after the LoadMaster is licensed.
3. Connect the monitor and keyboard to the Dell R-Series (or just a serial cable).
4. Connect the power cable to the Dell R-Series.
5. Turn on power to the unit.

2.1 Install the LoadMaster

To install the LoadMaster, follow the steps below:

1. Prepare the CD/USB with the image you downloaded from the Kemp website.
2. Insert the CD into the CD-ROM drive.

PXE and USB booting options are also supported by the LoadMaster installation ISO file.

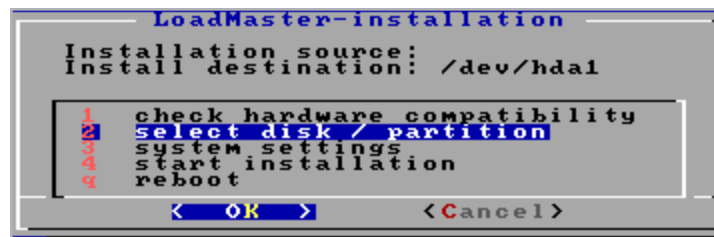
3. Boot the server.

```
LoadMaster Installion:
Boot Menu:
<install> to start installation with no boot parameters
<acpinoirq> to boot with acpi=noirq
<acpino> to boot with acpi=no
<pcibiosirq> to boot with pci=biosirq
boot: _
```

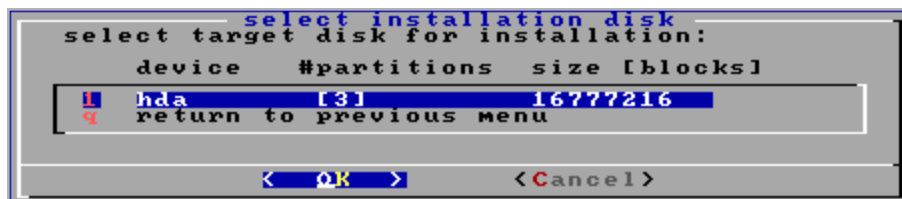
4. Once the server boots from the CD, the LoadMaster installation begins automatically with no parameters if no boot parameters are entered.

For further information on the different boot options that are available, refer to the [Bare Metal Boot Options, Technical Note](#).

The serial number should be automatically pulled from the LoadMaster. If it is not, please enter it when prompted. The serial number should be provided in the licensing email you received from Kemp. If you do not have this, you can log in to the Kemp website using your Kemp ID and the serial number should be available in your inventory. The Kemp ID you log in with must be associated with the Purchase Order or the person who received the licensing email.



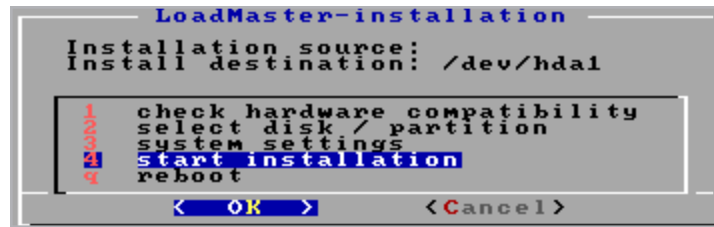
5. Select disk/partition and press **OK**.



6. Select the target disk for installation and press **OK**.



7. Select delete existing partition(s) and press **OK**.



8. Select start installation and press **OK**.
9. Press **OK**. The installation should complete successfully.

2.2 Boot the Installed LoadMaster

The server is now ready to be rebooted with the LoadMaster software installed on the local disk. Within the console, select the **Ctrl-Alt-Del** option from the **Macros** drop-down menu.

The server should now begin to boot from the local disk.

Occasionally, call trace code may appear while the LoadMaster is booting up. This can be ignored.

On initial deployment, DHCPv4 and DHCPv6 both run to attempt to obtain an IP address. If the LoadMaster obtains an IP address using DHCP, take note of it because this is how you will access the LoadMaster.

If the LoadMaster does not obtain an IP address using DHCP the static IP address of **192.168.1.101** is assigned and the LoadMaster must be manually configured using the console.

Please refer to the **Configuring the LoadMaster Using the Console** section for further information regarding manually configuring the LoadMaster.

```
#####
#
# Your LoadMaster has finished booting.
# UUID: 31159ab6-5da4-4b92-8ee2-b8922cc88dfe
# Serial Number: 446312
# IP address of LoadMaster is 10.154.11.180
#
# Point your browser at https://10.154.11.180 to configure your LoadMaster.
#
#####
```

2.3 License and Configure the LoadMaster

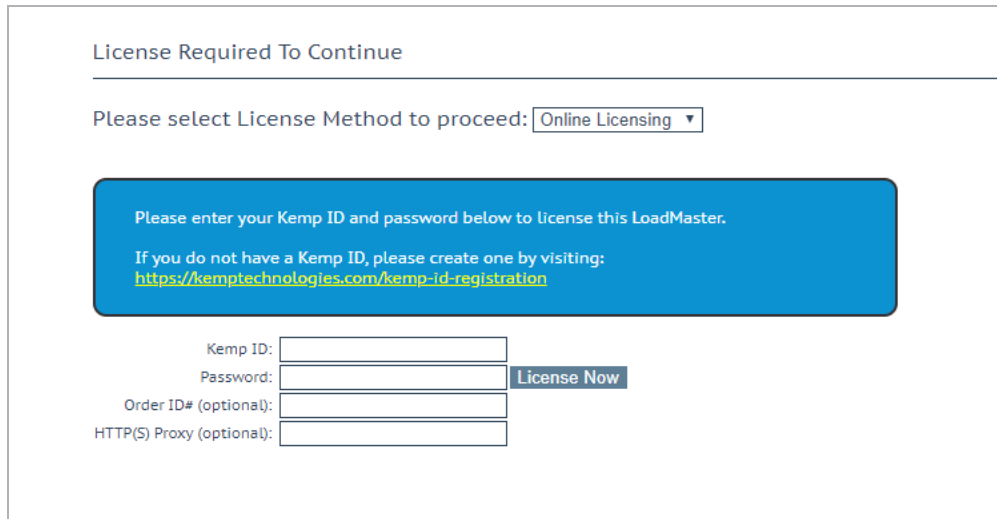
The LoadMaster must now be configured to operate within the network configuration.

1. In an internet browser, enter the IP address that was previously noted.

Ensure to enter **https://** before the IP address.

2. A warning may appear regarding website security certificates. Please click the continue/ignore option.
3. The LoadMaster End User License Agreement screen appears.

Please read the license agreement and, if you are willing to accept the conditions therein, click on the **Agree** button to proceed.

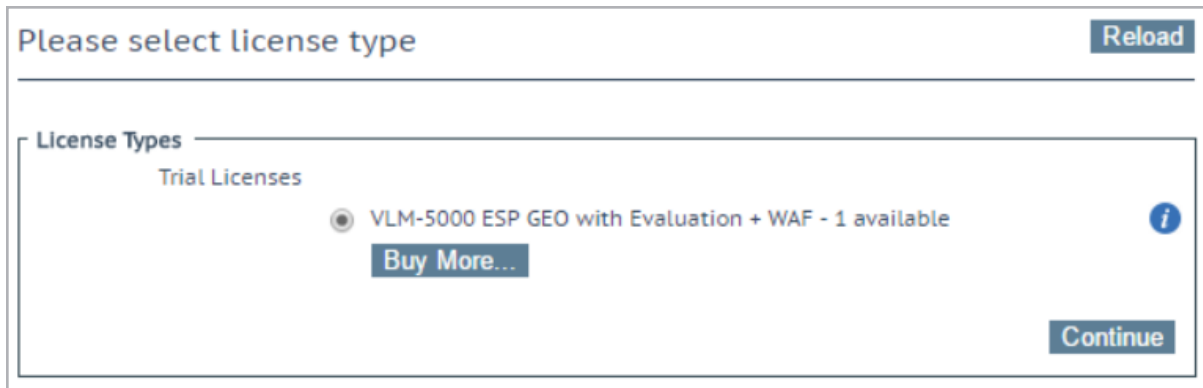


4. If using the **Online** licensing method, fill out the fields and click **License Now**.

If you are starting with a trial license, there is no need to enter an Order ID. If you are starting with a permanent license, enter the Kemp **Order ID#** if this was provided to you.

If using the **Offline Licensing** method, select **Offline Licensing**, obtain the license text, paste it into the **License** field and click **Apply License**.

For detailed instructions on how to register for a Kemp ID and license the LoadMaster, refer to the **Licensing, Feature Description** on the [Kemp Documentation Page](#).



5. If you entered an **Order ID**, a screen appears that provides a list of available licenses for that order ID, in addition to any licenses registered for the Kemp ID based on the LoadMaster platform type. Select the license type you want to apply to this LoadMaster.

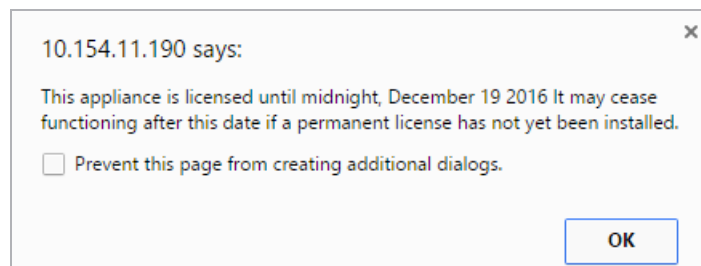
If the license type you want is not displayed, please contact your Kemp representative.

6. Click **Continue**.

7. The login screen appears, enter the **bal** user name and the password.

8. In the screen informing you that the password has changed, press the **Continue** button.

9. If your machine has shipped with a temporary license you should get a warning informing you that a temporary license has been installed on your machine and for how long the license is valid.



10. Click **OK**.

11. You should now connect to the **Home** screen of the LoadMaster.

12. Go to **System Configuration > Network Setup** in the main menu.

13. Click the **eth0** menu option within the **Interfaces** section.

Network Interface 0	
Interface Address (address[/prefix])	<input type="text"/> Set Address
Link Status	Speed: 10000Mb/s, Full Duplex Automatic Force Link
MTU:	<input type="text" value="1500"/> Set MTU
Additional addresses (address[/prefix])	<input type="text"/> Add Address
VLAN Configuration Interface Bonding	

14. In the **Network Interface 0** screen, enter the IP address of the eth0 interface, the network facing interface of the LoadMaster, in the **Interface Address** input field.

15. Click the **Set Address** button.

16. Click the **eth1** menu option within the **Interfaces** section.

17. In the **Network Interface 1** screen, enter the IP address of the eth1 interface, the farm-side interface of the LoadMaster, in the **Interface Address** input field.

18. Click on the **Set Address** button.

This interface is optional, depending on the network configuration.

19. Click on the **Local DNS Configuration > Hostname Configuration** menu option.

Set Hostname	
Hostname	<input type="text"/> Set Hostname

20. In the **Hostname configuration** screen, enter the hostname into the **Current Hostname** input field.

21. Click the **Set Hostname** button.

22. Click the **Local DNS Configuration > DNS Configuration** menu option.

DNS Servers	
DNS NameServer (IP Address)	Operation
10.154.75.25	<button>Delete</button>
Add Nameserver	
IP Address <input type="text"/>	<button>Add</button>
Add Search Domain	
Domain <input type="text"/>	<button>Add</button>

23. In the **DNS configuration** screen, enter the IP address(es) of the DNS Server(s) which is used to resolve names locally on the LoadMaster into the **DNS NameServer** input field.

24. Click the **Add** button.

25. Enter the domain name that is to be prepended to requests to the DNS nameserver into the **DNS NameServer** input field.

26. Click the **Add** button.

27. Click the **System Configuration > Network Setup > Default Gateway** menu option.

The IPv4 default gateway must be on the 10.154.0.0/16 network	
IPv4 Default Gateway Address <input type="text" value="10.154.0.1"/>	<button>Set IPv4 Default Gateway</button>

28. In the **DNS configuration** screen, enter the IP address of the default gateway into the **IPv4 Default Gateway Address** input field.

If you have an IPv6 Default Gateway, please enter the value in the **IPv6 Default Gateway Address** input field.

29. Click the **Set IPv4 Default Gateway** button.

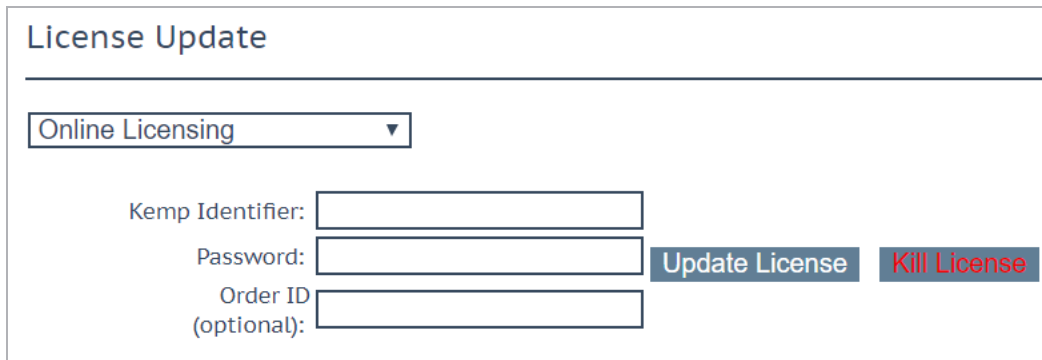
The LoadMaster is now fully installed and ready to be used. For further information on how to configure and implement the Virtual LoadMaster, please refer to the LoadMaster documentation which can be downloaded from the <http://kemptechnologies.com/documentation> page.

2.4 Update from Temporary to Permanent License

Depending on the terms and conditions of purchase, the LoadMaster will be entitled to either a temporary or permanent license. If the LoadMaster has a temporary license, a permanent license will be automatically issued by email upon receipt of payment.

To upgrade the license from temporary to permanent please complete the following steps:

1. Select the **System Configuration** menu option.
2. Select the **System Administration > Update License** menu option.
3. The **Update License** screen appears.



The screenshot shows the 'License Update' interface. At the top, there is a dropdown menu currently set to 'Online Licensing'. Below this, there are three input fields: 'Kemp Identifier:', 'Password:', and 'Order ID (optional):'. To the right of these fields are two buttons: 'Update License' (in blue) and 'Kill License' (in red).

4. If using the **Online Licensing** method, fill in the fields and click **Update License**.

Do not click **Kill License unless instructed to by Kemp Support.**

5. If using the **Offline Licensing** method, select **Offline Licensing**, copy the license text, paste it into the **License** field and click **Update License**.
6. Kemp recommends rebooting after updating the license.
7. The license should now be updated.

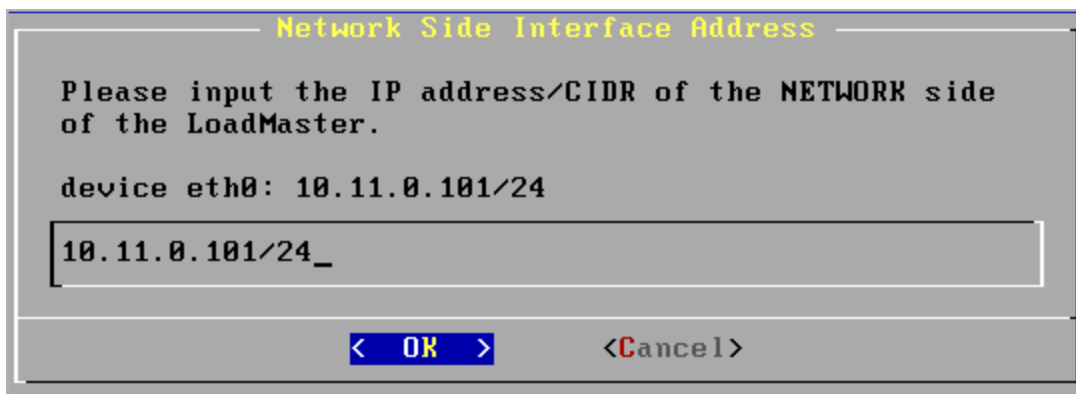
The LoadMaster is now fully installed, fully licensed and ready to be used. For further information on how to configure and implement the LoadMaster, please refer to the LoadMaster documentation which can be downloaded from the <http://kemptechnologies.com/documentation> page.

3 Configuring the LoadMaster Using the Console

If the LoadMaster does not automatically obtain an IP address using DHCP, or if you would prefer to configure the LoadMaster using the console, then the following configuration steps must be completed before starting the LoadMaster.

1. Login into the LoadMaster using the console with the following settings:

- **lb100 login: bal**
- **Password: 1fourall**



Network Side Interface Address

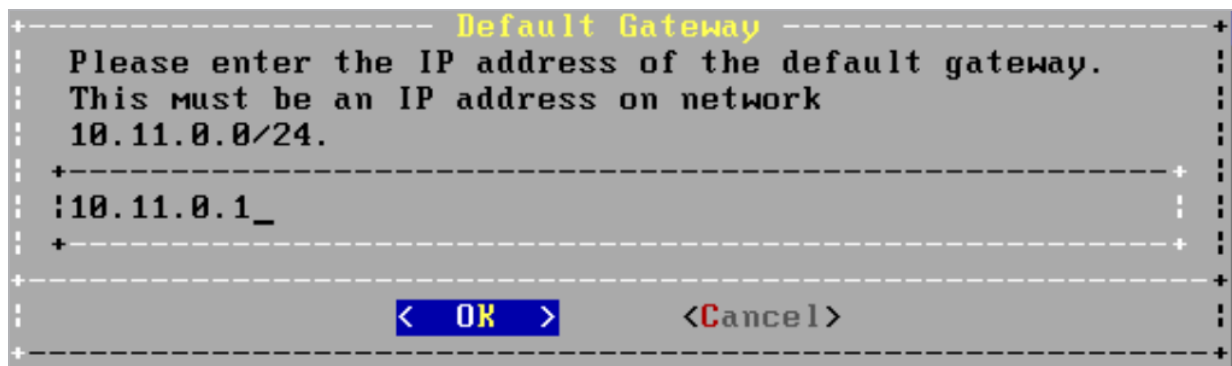
Please input the IP address/CIDR of the NETWORK side of the LoadMaster.

device eth0: 10.11.0.101/24

10.11.0.101/24_

< OK > <Cancel>

2. Enter the IP address of the eth0 interface, the network facing interface of the LoadMaster, in the input field within the **Network Side Interface Address** dialog box.
3. Press **OK**.



Default Gateway

Please enter the IP address of the default gateway. This must be an IP address on network 10.11.0.0/24.

10.11.0.1_

< OK > <Cancel>

3 Configuring the LoadMaster Using the Console

4. Enter the IP address of the default gateway in the input field of the **Default Gateway** dialog box.
5. Press **OK**.
6. Once these are set, a prompt will appear asking to connect to the web interface at the newly configured IP address. In an internet browser enter the IP address of the eth0 entered in Step 2.

Ensure to enter **https://** before the IP address.

7. A warning may appear regarding website security certificates. Please click the continue/ignore option.
8. The LoadMaster End User License Agreement screen appears.
9. Please read the license agreement and, if willing to accept the conditions therein, click on the **Agree** button to proceed.
10. If the machine has shipped with a temporary license, a warning will appear informing that a temporary license has been installed on the machine and for how long the license is valid.
11. Click **OK**.
12. The home screen of the LoadMaster should appear.

The LoadMaster is now fully installed and ready to be used. For further information on how to configure and implement the Virtual LoadMaster, please refer to the LoadMaster documentation which can be found here: <https://kemptechnologies.com/documentation>.

4 The iDRAC Module

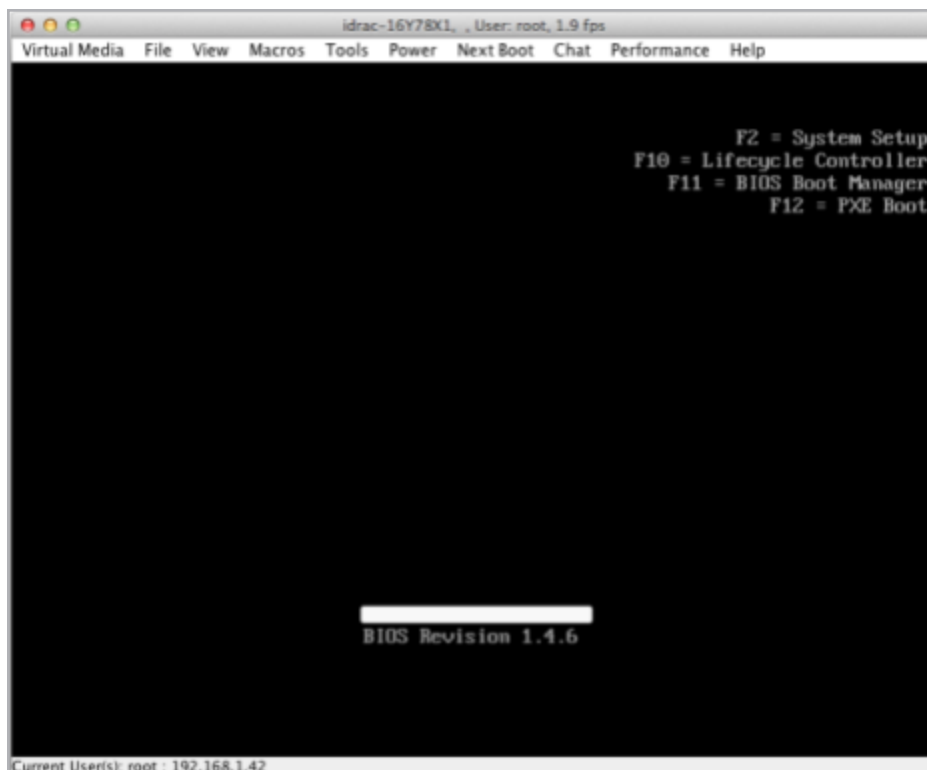
iDRAC Enterprise may not be installed on your Dell Server Platform. Please confirm with your Dell Support Team.

The iDRAC module gives network administrators a dedicated management channel for device maintenance. The iDRAC functionality can be accessed by using a Command Line Interface (CLI) or a supported web browser. The iDRAC has its own network connection, memory, processor and access to the system bus. Key features of the iDRAC include remote console capabilities, power management and virtual media access.

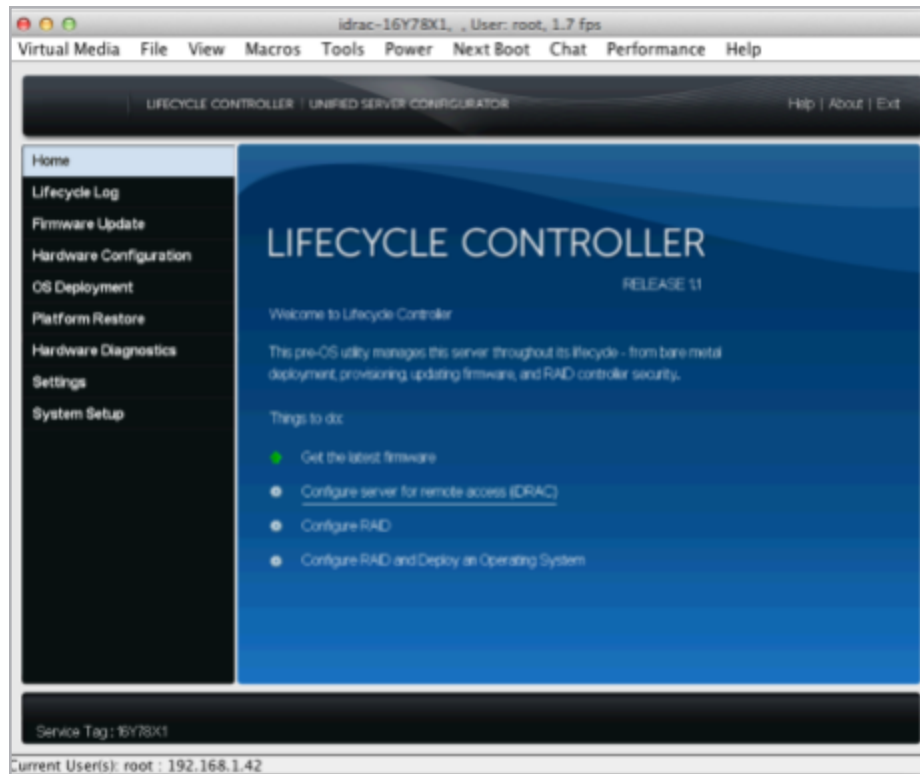
4.1 Configure the iDRAC Module

To configure the iDRAC module, follow the steps below.

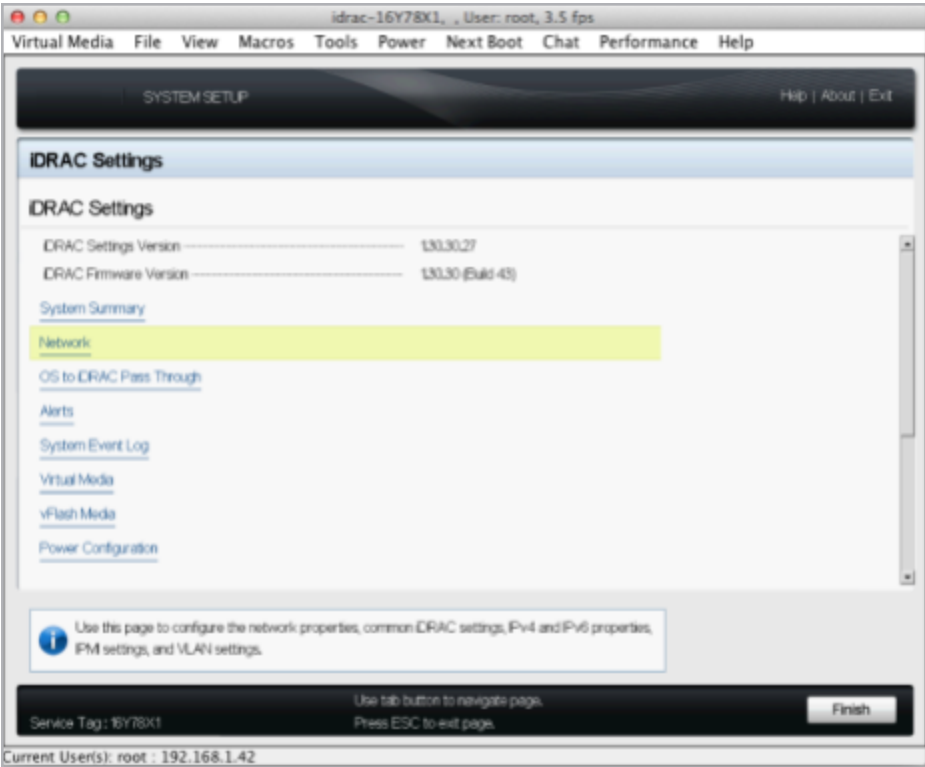
1. Connect and boot the iDRAC.



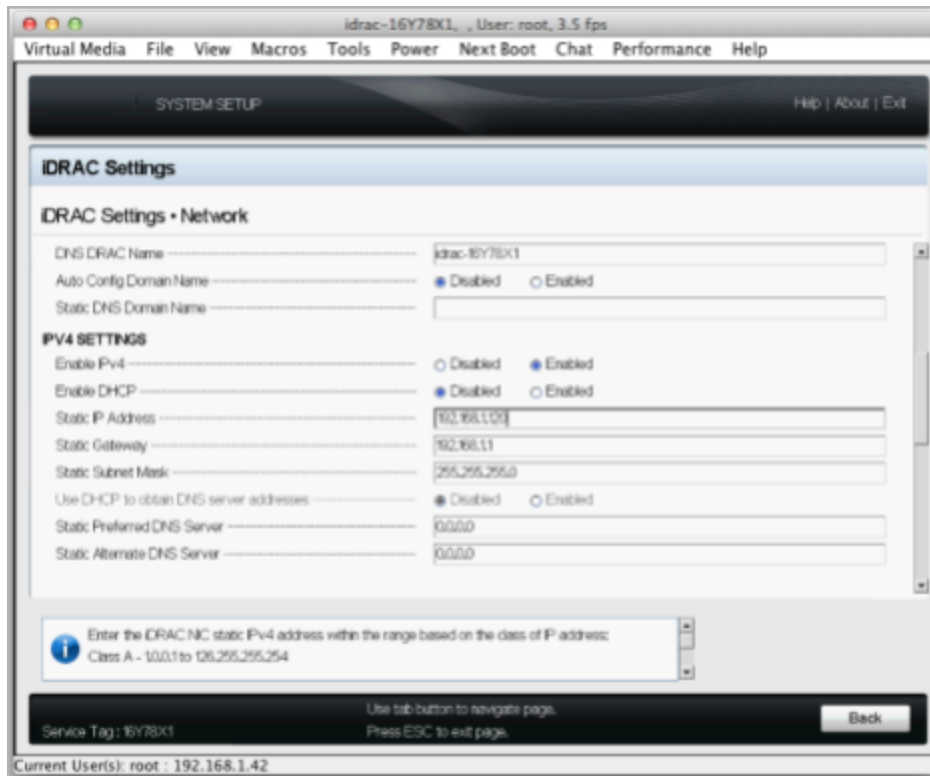
2. At boot prompt, press **F10** on the keyboard to enter the Lifecycle controller.



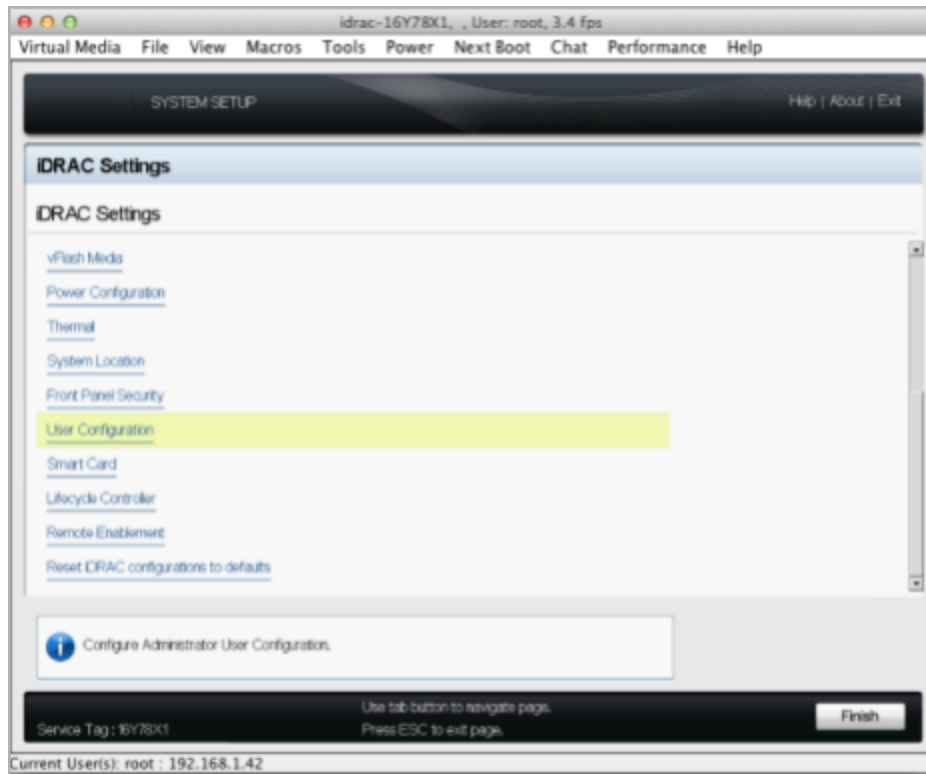
3. In the main menu, select **Home**.
4. Click **Configure server for remote access (iDRAC)**.



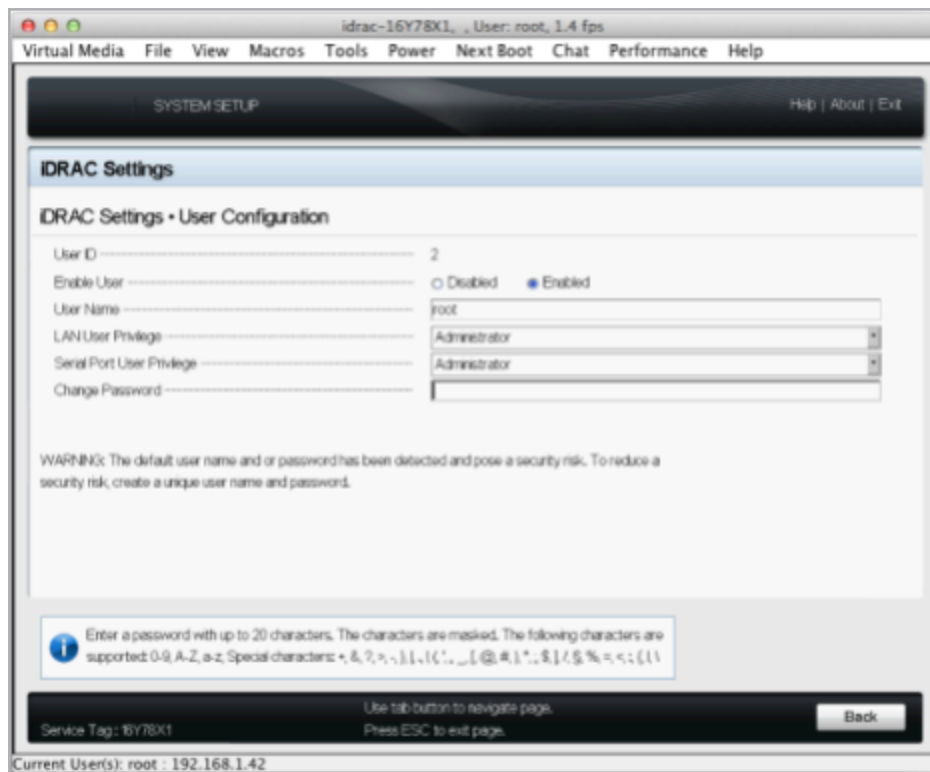
5. Click **Network**.



6. Select **Enabled** for the **Enable IPv4** option.
7. Set the **Static IP Address**.
8. Set the **Static Gateway**.
9. Set the **Static Subnet Mask**.
10. Click **Back**.



11. Click **User Configuration**.



12. Set the values as required.
13. Click the **Back** button.
14. Click **Exit**.
15. Now, log in to the iDRAC module from a web browser by entering the IP address previously configured.

Ensure to enter **https://** before the IP address.

4.2 Restore Functionality Using the iDRAC Module

The iDRAC module is an effective way of restoring functionality to units when the Solid State Drive (SSD) needs to be replaced. The server is able to boot from an ISO uploaded to the vFlash SD card and reinstall the firmware.

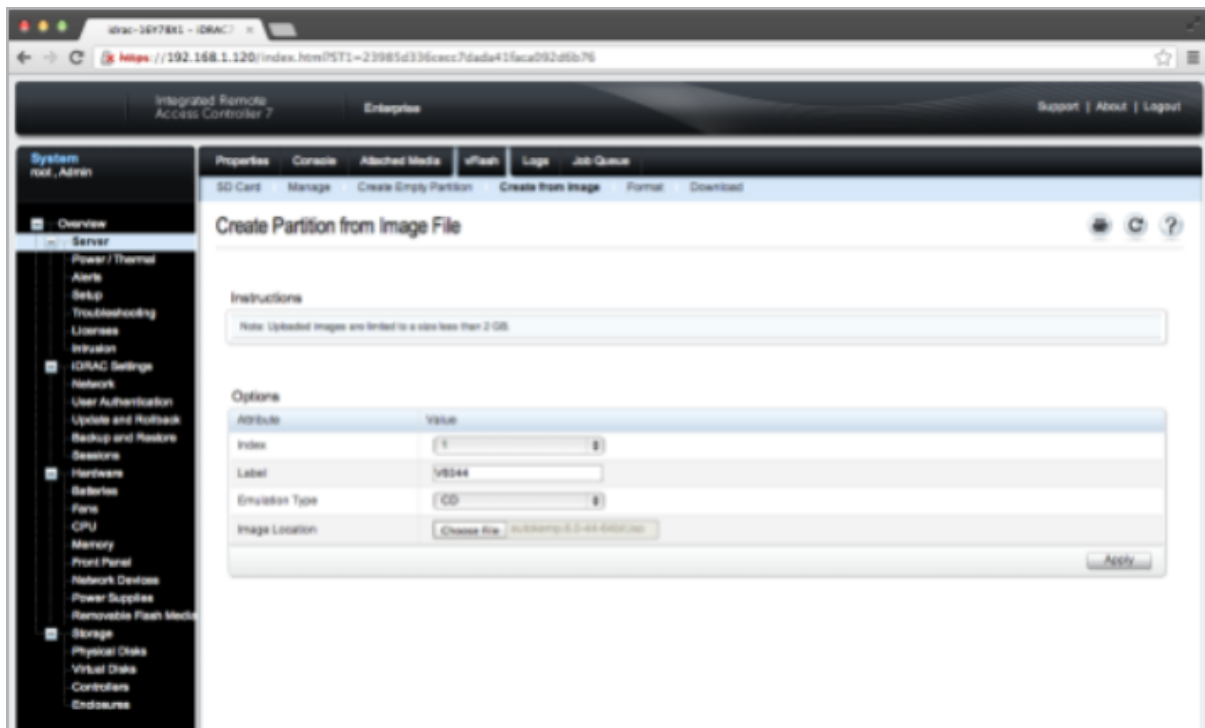
Follow the steps below to restore using the iDRAC:

1. First, create a vFlash image.

2. Then, log in to the iDRAC Web User Interface (WUI) by navigating to the IP address in a web browser.

Ensure to enter **https://** before the IP address.

3. Navigate to **vFlash** and select **Create from Image**.



4. Select **1** as the **Index** value.

5. Enter a **Label**.

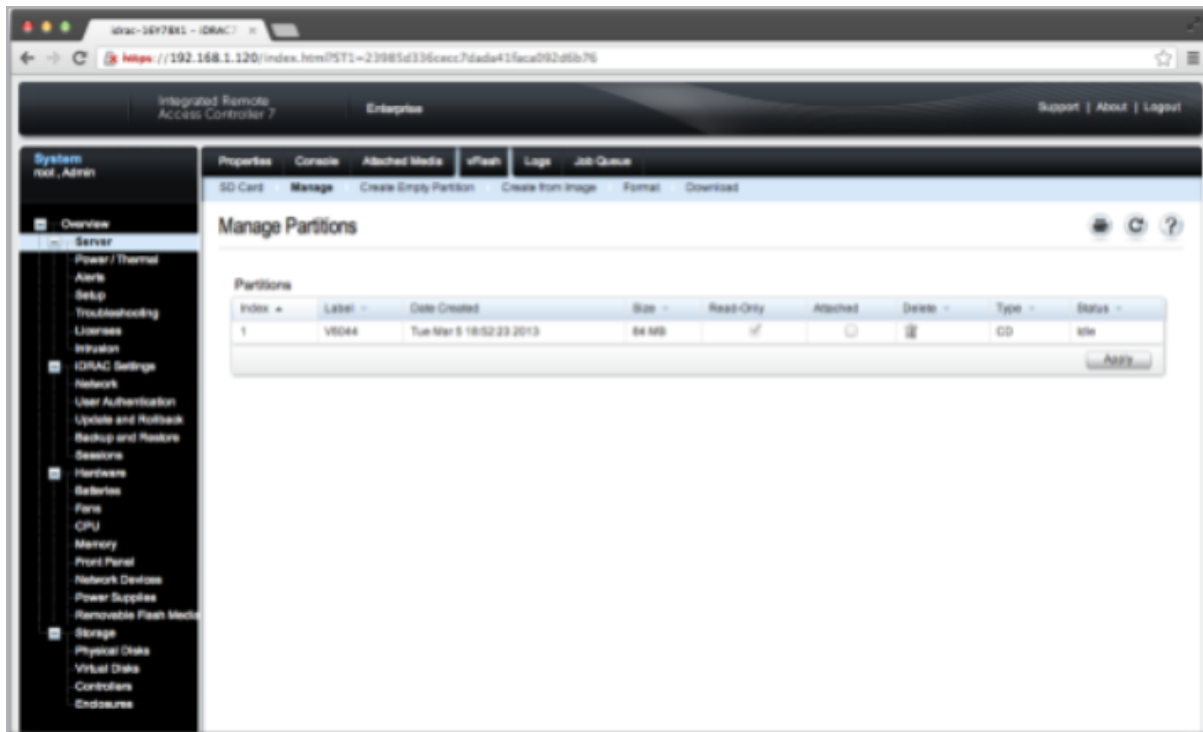
6. Select **CD** as the **Emulation Type**.

7. Click **Choose File** and navigate to the relevant **.iso** file.

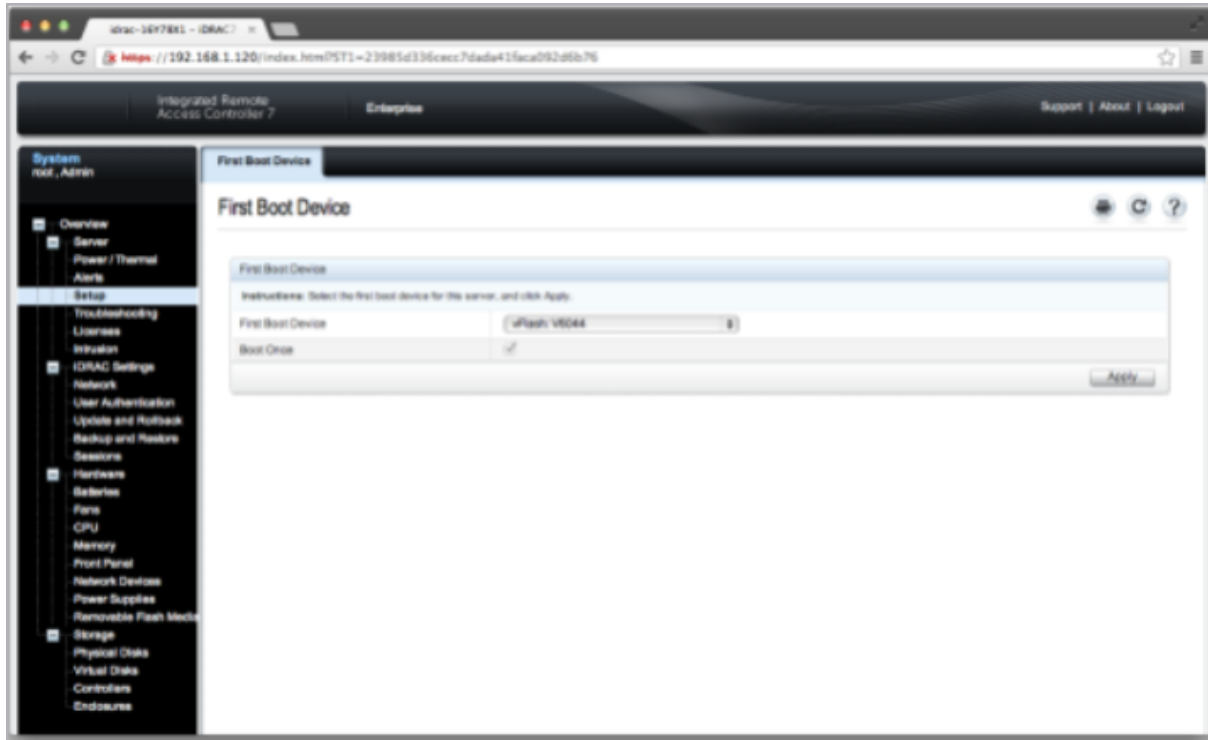
64-bit firmware must be used for Dell PERC controllers to be supported. 32-bit firmware gives an error saying the hard drive cannot be found.

8. Wait for the vFlash partition to be created successfully.

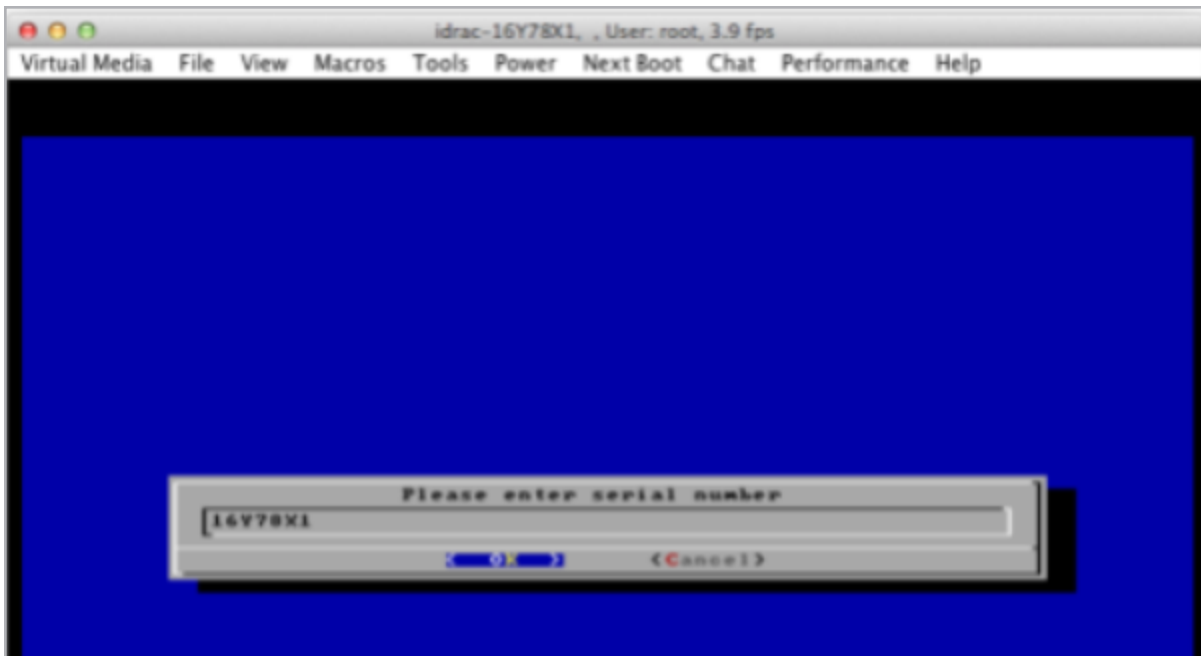
9. Navigate to **vFlash > Manage**.



10. Select the **Attached** checkbox.
11. Click **Apply**.
12. Navigate to **Overview > Server > Setup**.

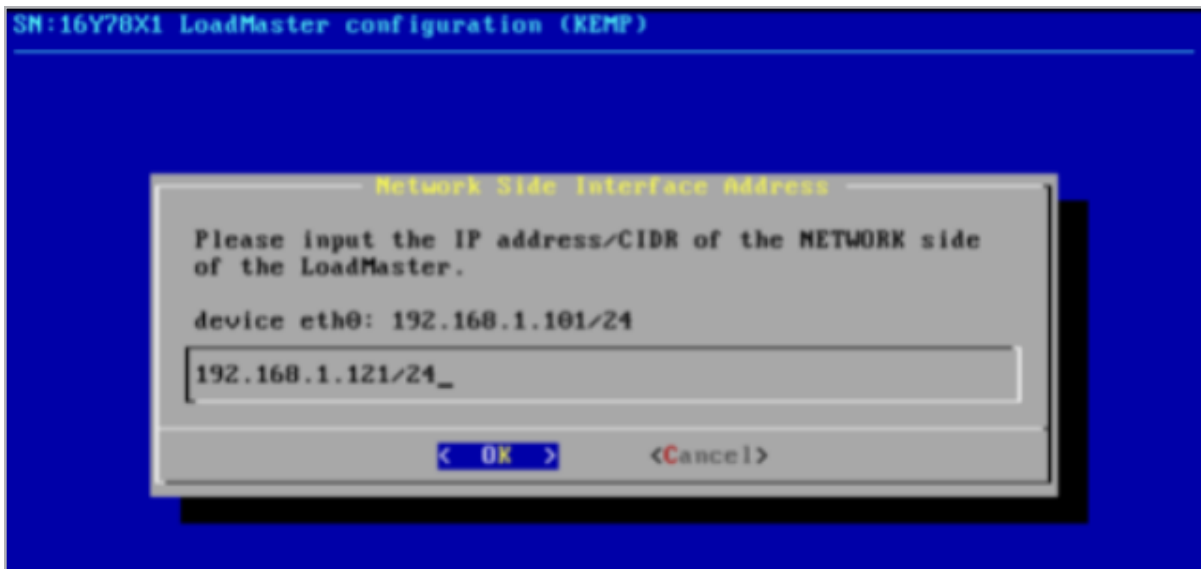


13. Select the relevant **First Boot Device**.
14. Click **Apply**.
15. Reboot the LoadMaster and observe the installation.



16. Enter the service tag as the serial number and press **OK**.

17. A message will be displayed informing that the installation was successful.



18. Enter the IP address and press **OK**.

19. When the quick-start setup is finished, the LoadMaster will reboot.

20. Move the network cable to the general NIC (use the left-most interface riser card above the iDRAC).

21. Connect to the LoadMaster WUI by entering the IP address of the LoadMaster in a web browser. Ensure to enter **https://** before the IP address.

22. Accept the license agreement.

23. License the LoadMaster. For further information, refer to the [LoadMaster Licensing Feature Description](#).

If you are unable to complete licensing, contact Kemp.

24. Set the password and log in.

After logging in successfully the LoadMaster **Home** screen should appear. Verify that the installation has completed successfully.

References

Unless otherwise specified, the following documents can be found at <http://kemptechnologies.com/documentation>.

WUI, Configuration Guide

Licensing, Feature Description

Kemp LoadMaster, Product Overview

Bare Metal Boot Options, Technical Note

Last Updated Date

This document was last updated on 28 July 2023.