



Cisco UCS C-Series

Installation Guide

UPDATED: 27 July 2023

© 2022 Progress Software Corporation and/or one of its subsidiaries or affiliates. All rights reserved.

These materials and all Progress® software products are copyrighted and all rights are reserved by Progress Software Corporation. The information in these materials is subject to change without notice, and Progress Software Corporation assumes no responsibility for any errors that may appear therein. The references in these materials to specific platforms supported are subject to change.

#1 Load Balancer in Price/Performance, 360 Central, 360 Vision, Chef, Chef (and design), Chef Habitat, Chef Infra, Code Can (and design), Compliance at Velocity, Corticon, Corticon.js, DataDirect (and design), DataDirect Cloud, DataDirect Connect, DataDirect Connect64, DataDirect XML Converters, DataDirect XQuery, DataRPM, Defrag This, Deliver More Than Expected, DevReach (and design), Driving Network Visibility, Flowmon, Inspec, Ipswitch, iMacros, K (stylized), Kemp, Kemp (and design), Kendo UI, Kinvey, LoadMaster, MessageWay, MOVEit, NativeChat, OpenEdge, Powered by Chef, Powered by Progress, Progress, Progress Software Developers Network, SequeLink, Sitefinity (and Design), Sitefinity, Sitefinity (and design), Sitefinity Insight, SpeedScript, Stylized Design (Arrow/3D Box logo), Stylized Design (C Chef logo), Stylized Design of Samurai, TeamPulse, Telerik, Telerik (and design), Test Studio, WebSpeed, WhatsConfigured, WhatsConnected, WhatsUp, and WS_FTP are registered trademarks of Progress Software Corporation or one of its affiliates or subsidiaries in the U.S. and/or other countries.

Analytics360, AppServer, BusinessEdge, Chef Automate, Chef Compliance, Chef Desktop, Chef Workstation, Corticon Rules, Data Access, DataDirect Autonomous REST Connector, DataDirect Spy, DevCraft, Fiddler, Fiddler Classic, Fiddler Everywhere, Fiddler Jam, FiddlerCap, FiddlerCore, FiddlerScript, Hybrid Data Pipeline, iMail, InstaRelinker, JustAssembly, JustDecompile, JustMock, KendoReact, OpenAccess, PASOE, Pro2, ProDataSet, Progress Results, Progress Software, ProVision, PSE Pro, Push Jobs, SafeSpaceVR, Sitefinity Cloud, Sitefinity CMS, Sitefinity Digital Experience Cloud, Sitefinity Feather, Sitefinity Thunder, SmartBrowser, SmartComponent, SmartDataBrowser, SmartDataObjects, SmartDataView, SmartDialog, SmartFolder, SmartFrame, SmartObjects, SmartPanel, SmartQuery, SmartViewer, SmartWindow, Supermarket, SupportLink, Unite UX, and WebClient are trademarks or service marks of Progress Software Corporation and/or its subsidiaries or affiliates in the U.S. and other countries. Java is a registered trademark of Oracle and/or its affiliates. Any other marks contained herein may be trademarks of their respective owners.

Please refer to the NOTICE.txt or Release Notes – Third-Party Acknowledgements file applicable to a particular Progress product/hosted service offering release for any related required third-party acknowledgements.

Table of Contents

1 Introduction	4
1.1 Pre-requisites	4
2 Installing LoadMaster on the Cisco UCS C-Series Server	5
2.1 Configure the Boot Options and Open the KVM Console	5
2.2 Create a Virtual CD-ROM with Installation Media	6
2.3 Boot the Server	7
2.4 Install the LoadMaster	8
2.5 Boot the Installed LoadMaster	10
2.6 License and Configure the LoadMaster	11
3 Configuring the LoadMaster Using the Console	16
References	18
Licensing, Feature Description	18
Bare Metal Boot Options, Technical Note	18
Last Updated Date	19

1 Introduction

The Kemp LoadMaster load balancing solution is specifically optimized for the UCS C-Series Rack Servers, enabling customers to deploy full-feature, high-performance load balancers. This can reduce network design complexity as well as increased performance. Cisco UCS C-Series Rack Servers deliver unified computing in an industry-standard form factor to reduce total cost of ownership and increase agility. The Kemp solution is designed to handle load balancing for application-to-application connections for external/internet based connections to web services.

This document describes the steps required to install the Kemp LoadMaster software on a Cisco UCS C-Series Rack Server.

PXE and USB booting options are also supported by the LoadMaster installation ISO file.

1.1 Pre-requisites

The following pre-requisites are required:

- A Cisco UCS C-Series Rack Server.
- An ISO image with the LoadMaster software.

The ISO image can be downloaded from www.kemptechnologies.com/ucs.

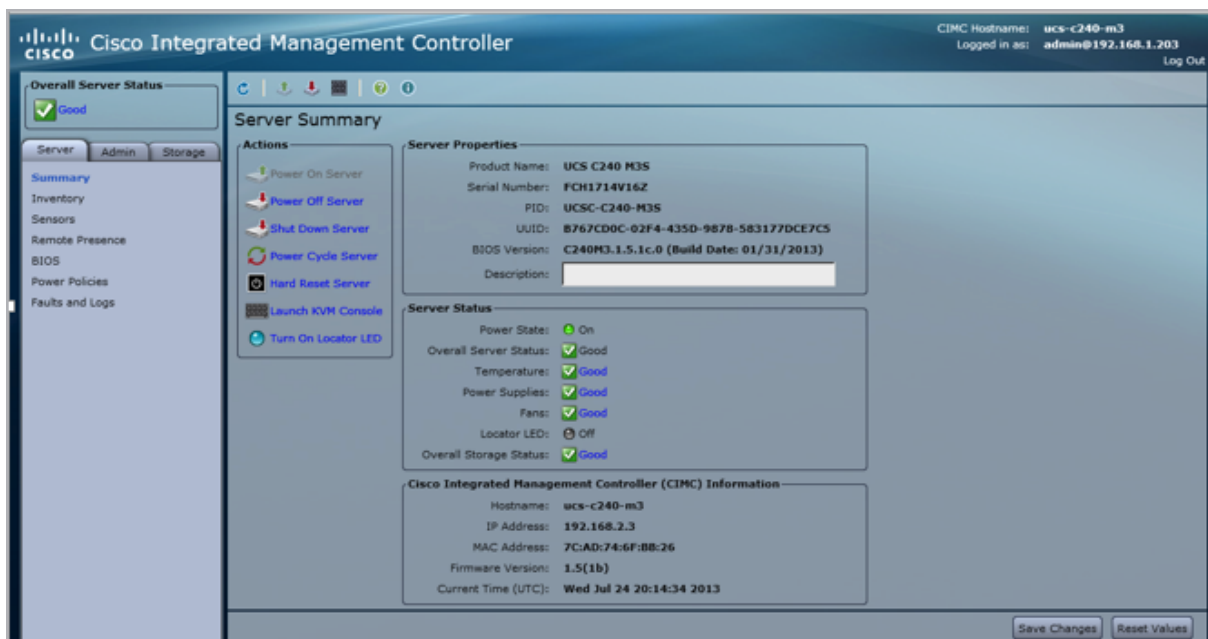
- For a standalone LoadMaster one IP-address on an untagged LAN is required. Three IP-addresses are required for a HA pair.
- The boot order on the C-Series Blade Server should be configured as follows:
 1. HDD
 2. CDROM

2 Installing LoadMaster on the Cisco UCS C-Series Server

The following steps must be completed to install the LoadMaster software on the Cisco C-Series Server. These steps must be completed on the jump host, where the LoadMaster installation ISO image is located.

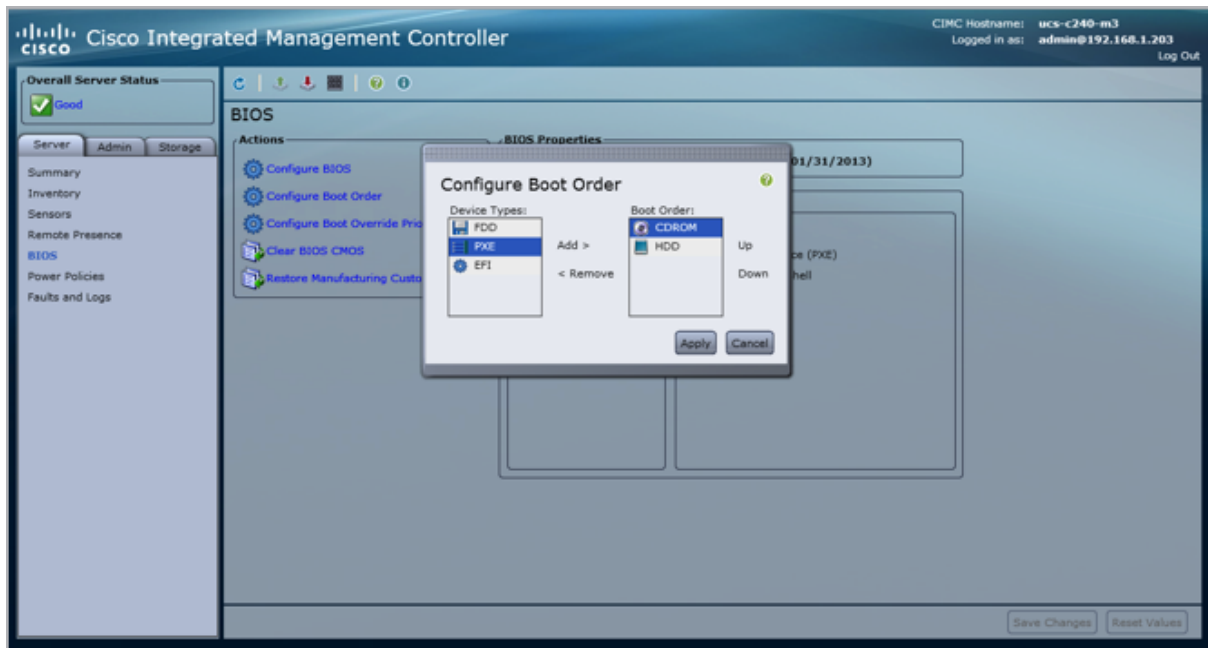
2.1 Configure the Boot Options and Open the KVM Console

First, open the KVM console for the C-Series server by following the steps below:



1. In a web browser, log in to the Cisco Integrated Management Controller (CIMC).
2. Select the **Server** tab on the left.
3. Select **BIOS**.
4. In the **Actions** area, click **Configure Boot Order**.

2 Installing LoadMaster on the Cisco UCS C-Series Server

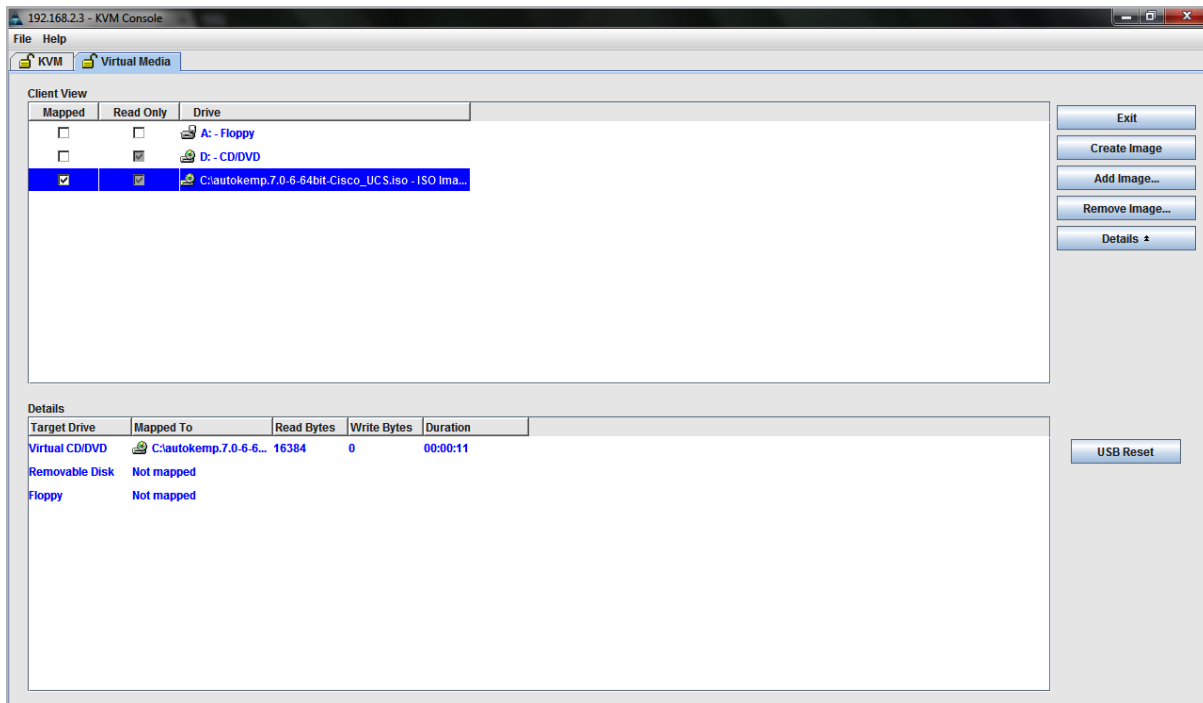


5. Set the **Boot Order** to **HDD**, then **CDROM**.
6. Click **Apply**.
7. In the **Server** tab, select **Summary**.
8. In the **Actions** area, click **Launch KVM Console**. The KVM will open in a new window.

2.2 Create a Virtual CD-ROM with Installation Media

1. Select the **Virtual Media** tab.

2 Installing LoadMaster on the Cisco UCS C-Series Server



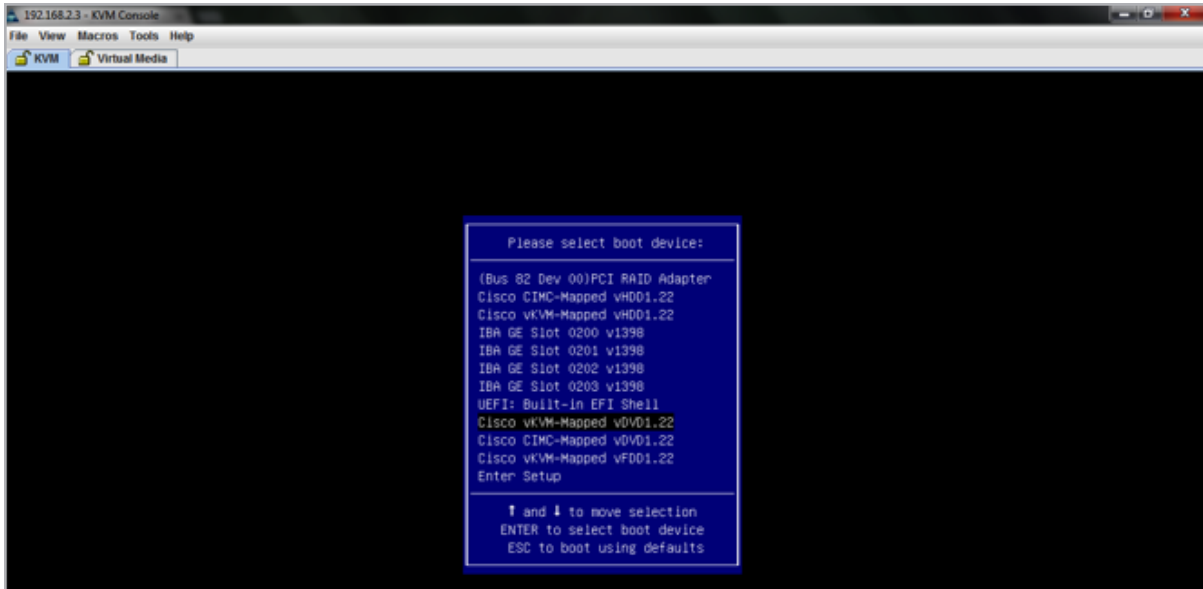
2. Click the **Add Image...** button.
3. Navigate to and select the Operating System (OS) installation disk image (ISO).
4. Click **Open** to mount the disk image.
5. Select the **Mapped** checkbox for the mounted disk image.

2.3 Boot the Server

The server is now ready to be booted to complete the installation procedure.

1. Click the **Boot Server** option on the KVM console. The server is booted from the previously mapped virtual CD.

2 Installing LoadMaster on the Cisco UCS C-Series Server



2. Press **F6** on your keyboard when prompted and select the virtual CD/DVD drive as the boot device in the KVM console.

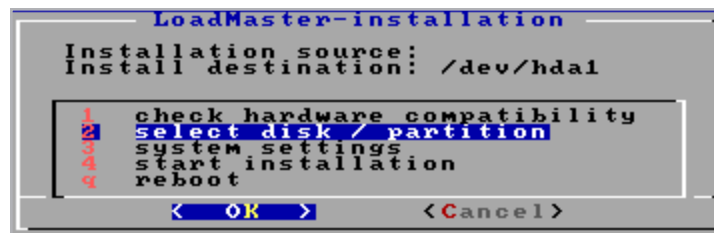
The server should boot from the virtual CD.

2.4 Install the LoadMaster

Once the server boots from the virtual CD, as described in **the Boot the Server** section, the LoadMaster installation process automatically begins.

For further information on the different boot options that are available, refer to the [Bare Metal Boot Options, Technical Note](#).

The serial number should be automatically pulled from the LoadMaster. If it is not, please enter it when prompted.



1. Select select disk/partition and press **OK**.

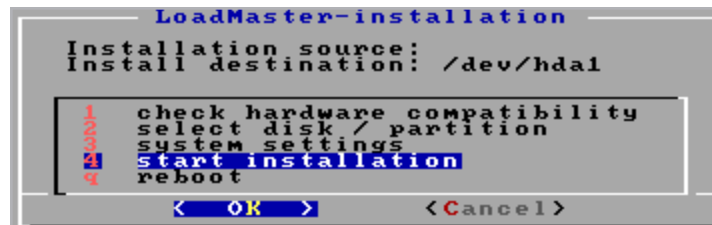
2 Installing LoadMaster on the Cisco UCS C-Series Server



2. Select the target disk for installation and press **OK**.



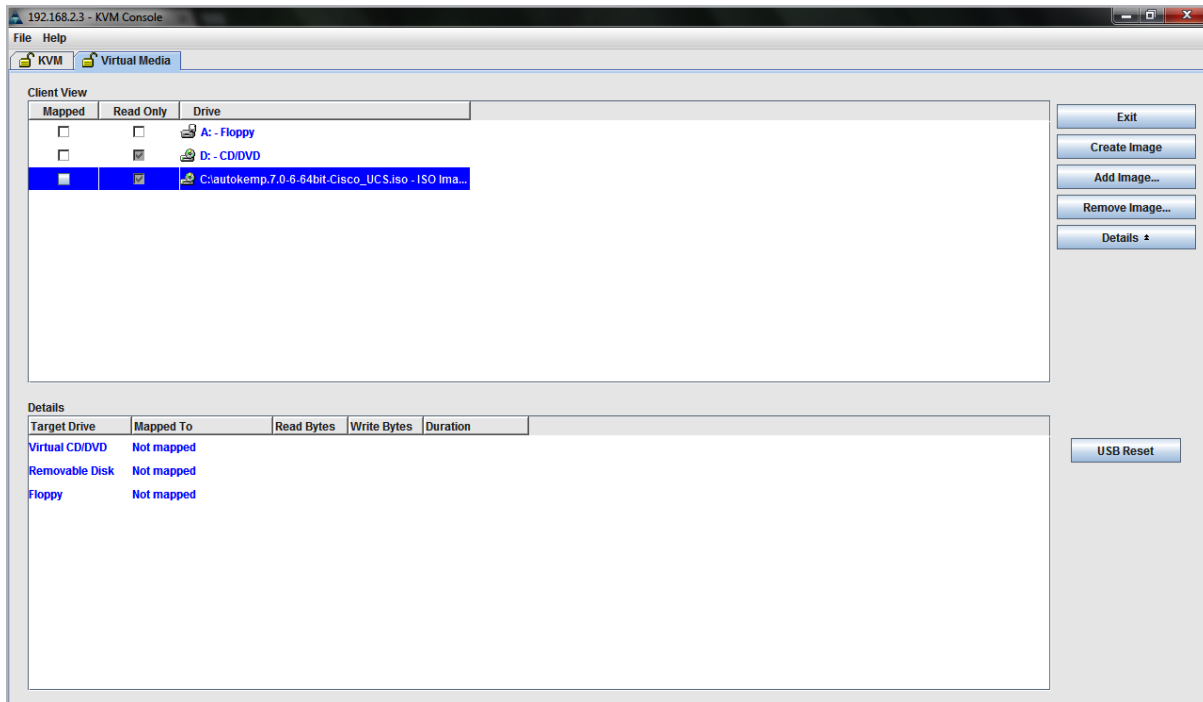
3. Select delete existing partition(s) and press **OK**.



4. Select start installation and press **OK**.

5. Press **OK**. The installation should complete successfully.

2.5 Boot the Installed LoadMaster



Before rebooting the server, unmount the installation media by deselecting the **Mapped** checkbox in the **Virtual Media** tab.

The server is now ready to be rebooted with the LoadMaster software installed on the local disk. Within the KVM console, select the **Ctrl-Alt-Del** option from the **Macros** drop-down menu.

The server should now begin to boot from the local disk.

```
#####
#
# Your LoadMaster has finished booting.
# UUID: 31159ab6-5da4-4b92-8ee2-b8922cc08dfe
# Serial Number: 446312
# IP address of LoadMaster is 10.154.11.180
#
# Point your browser at https://10.154.11.180 to configure your LoadMaster.
#
#####
```

The LoadMaster should obtain an IP address by DHCP, please note this value.

If the LoadMaster does not obtain an IP address by DHCP then the LoadMaster must be manually configured using the KVM console once the license key has been obtained. Please refer to the

Configuring the LoadMaster Using the Console section for further information regarding manually configuring the LoadMaster.

After a successful boot, a login prompt will appear. Log in using the LoadMaster user credentials. The default login details are as follows:

- lb100 login: root
- password: 1fourall

2.6 License and Configure the LoadMaster

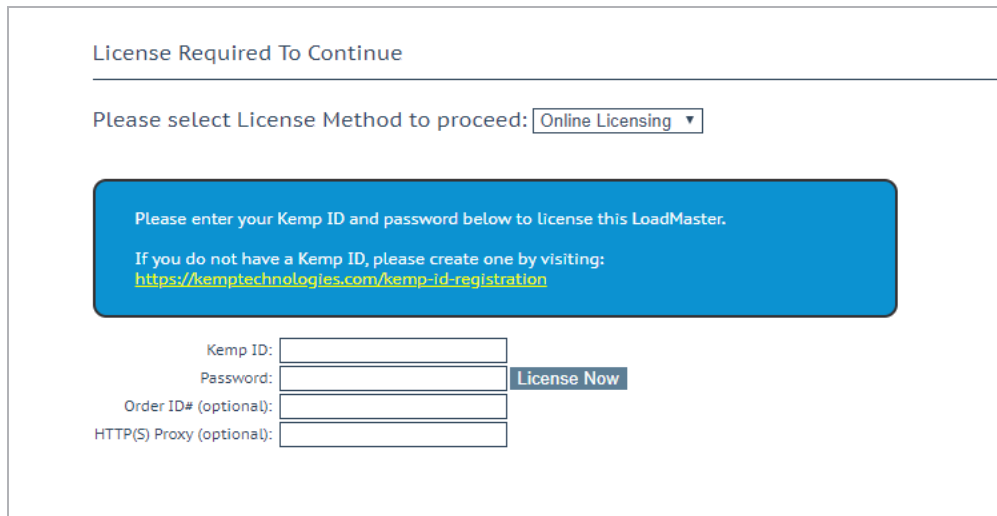
The LoadMaster must now be configured to operate within the network configuration.

1. In an internet browser, enter the IP address that was previously noted.

Ensure to enter **https://** before the IP address.

2. A warning may appear regarding website security certificates. Please click the continue/ignore option.
3. The LoadMaster End User License Agreement screen appears.

Please read the license agreement and, if you are willing to accept the conditions therein, click on the **Agree** button to proceed.



License Required To Continue

Please select License Method to proceed: Online Licensing ▼

Please enter your Kemp ID and password below to license this LoadMaster.

If you do not have a Kemp ID, please create one by visiting:
<https://kemptechnologies.com/kemp-id-registration>

Kemp ID:

Password: License Now

Order ID# (optional):

HTTP(S) Proxy (optional):

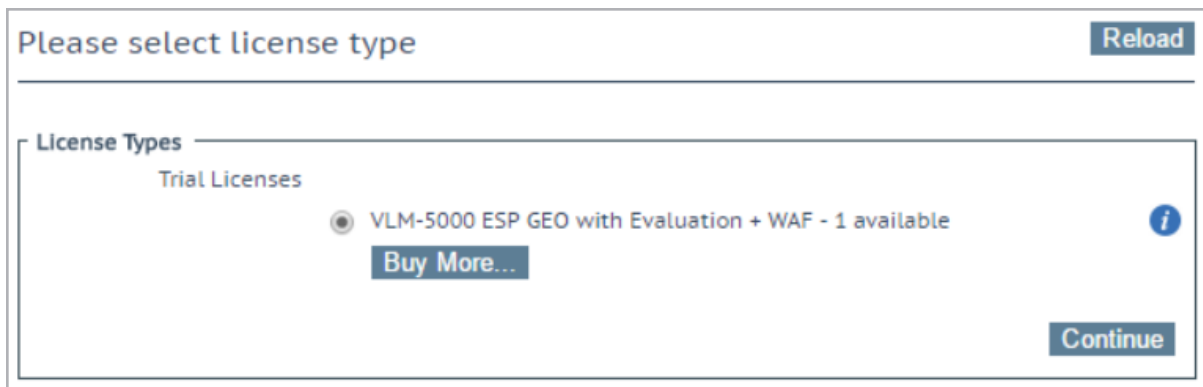
4. If using the **Online** licensing method, fill out the fields and click **License Now**.

2 Installing LoadMaster on the Cisco UCS C-Series Server

If you are starting with a trial license, there is no need to enter an Order ID. If you are starting with a permanent license, enter the Kemp **Order ID#** if this was provided to you.

If using the **Offline Licensing** method, select **Offline Licensing**, obtain the license text, paste it into the **License** field and click **Apply License**.

For detailed instructions on how to register for a Kemp ID and license the LoadMaster, refer to the **Licensing, Feature Description** on the [Kemp Documentation Page](#).



5. If you entered an **Order ID**, a screen appears that provides a list of available licenses for that order ID, in addition to any licenses registered for the Kemp ID based on the LoadMaster platform type. Select the license type you want to apply to this LoadMaster.

If the license type you want is not displayed, please contact your Kemp representative.

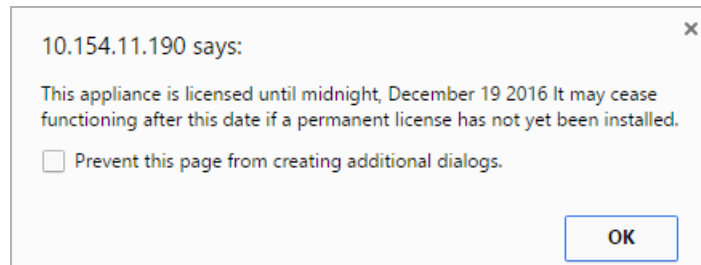
6. Click **Continue**.

7. The login screen appears, enter the **bal** user name and the password.

8. In the screen informing you that the password has changed, press the **Continue** button.

9. If your machine has shipped with a temporary license you should get a warning informing you that a temporary license has been installed on your machine and for how long the license is valid.

2 Installing LoadMaster on the Cisco UCS C-Series Server



10. Click **OK**.
11. You should now connect to the **Home** screen of the LoadMaster.
12. Go to **System Configuration > Network Setup** in the main menu.
13. Click the **eth0** menu option within the **Interfaces** section.

Network Interface 0	
Interface Address (address[/prefix])	<input type="text"/> Set Address
Link Status	Speed: 10000Mb/s, Full Duplex Automatic Force Link
MTU:	<input type="text" value="1500"/> Set MTU
Additional addresses (address[/prefix])	<input type="text"/> Add Address
VLAN Configuration Interface Bonding	

14. In the **Network Interface 0** screen, enter the IP address of the eth0 interface, the network facing interface of the LoadMaster, in the **Interface Address** input field.
 15. Click the **Set Address** button.
 16. Click the **eth1** menu option within the **Interfaces** section.
 17. In the **Network Interface 1** screen, enter the IP address of the eth1 interface, the farm-side interface of the LoadMaster, in the **Interface Address** input field.
 18. Click on the **Set Address** button.
- This interface is optional, depending on the network configuration.
19. Click on the **Local DNS Configuration > Hostname Configuration** menu option.

Set Hostname

Hostname

20. In the **Hostname configuration** screen, enter the hostname into the **Current Hostname** input field.

21. Click the **Set Hostname** button.

22. Click the **Local DNS Configuration > DNS Configuration** menu option.

DNS Servers

DNS NameServer (IP Address)	Operation
10.154.75.25	<input type="button" value="Delete"/>

Add Nameserver

IP Address

Add Search Domain

Domain

23. In the **DNS configuration** screen, enter the IP address(es) of the DNS Server(s) which is used to resolve names locally on the LoadMaster into the **DNS NameServer** input field.

24. Click the **Add** button.

25. Enter the domain name that is to be prepended to requests to the DNS nameserver into the **DNS NameServer** input field.

26. Click the **Add** button.

27. Click the **System Configuration > Network Setup > Default Gateway** menu option.

The IPv4 default gateway must be on the 10.154.0.0/16 network

IPv4 Default Gateway Address

2 Installing LoadMaster on the Cisco UCS C-Series Server

28. In the **DNS configuration** screen, enter the IP address of the default gateway into the **IPv4 Default Gateway Address** input field.

If you have an IPv6 Default Gateway, please enter the value in the **IPv6 Default Gateway Address** input field.

29. Click the **Set IPv4 Default Gateway** button.

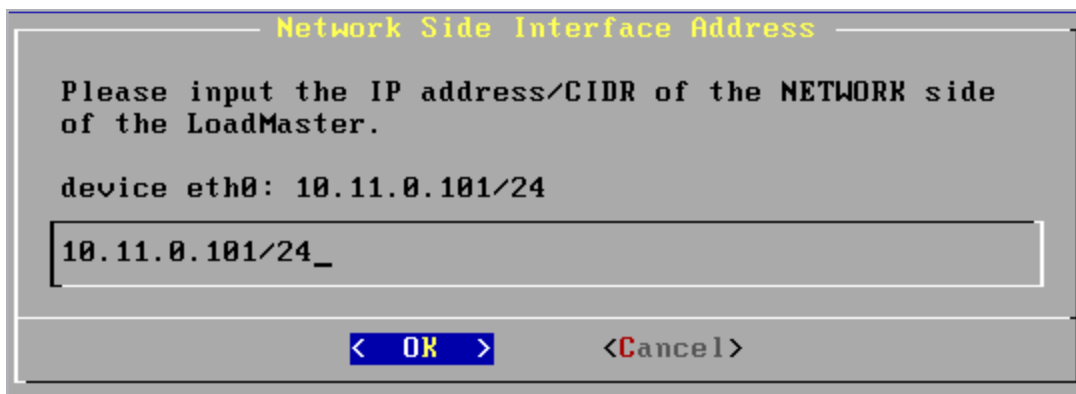
The LoadMaster is now fully installed and ready to be used. For further information on how to configure and implement the Virtual LoadMaster, please refer to the LoadMaster documentation which can be downloaded from the <http://kemptechnologies.com/documentation> page.

3 Configuring the LoadMaster Using the Console

If the LoadMaster does not automatically obtain an IP address using DHCP, or if the user prefers to configure the LoadMaster using the console, then the following configuration steps must be completed before starting the LoadMaster.

1. Login into the LoadMaster using the console with the following settings:

- lb100 login: bal
- Password: 1fourall



Network Side Interface Address

Please input the IP address/CIDR of the NETWORK side of the LoadMaster.

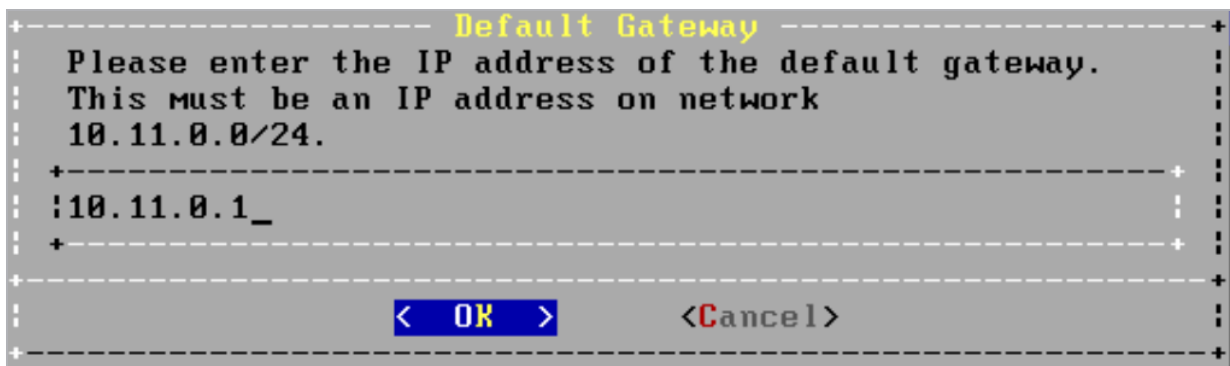
device eth0: 10.11.0.101/24

10.11.0.101/24_

< OK > <Cancel>

2. Enter the IP address of the eth0 interface, the network facing interface of the LoadMaster, in the input field within the **Network Side Interface Address** dialog box.

3. Press **OK**.



Default Gateway

Please enter the IP address of the default gateway. This must be an IP address on network 10.11.0.0/24.

10.11.0.1_

< OK > <Cancel>

3 Configuring the LoadMaster Using the Console

4. Enter the IP address of the default gateway in the input field of the **Default Gateway** dialog box.
5. Press **OK**.
6. Once these are set, a prompt will appear asking to connect to the web interface at the newly configured IP address. In an internet browser enter the IP address of the eth0 entered in Step 2.

Ensure to enter **https://** before the IP address.

7. A warning may appear regarding website security certificates. Please click the continue/ignore option.
8. The LoadMaster End User License Agreement screen appears.
9. Please read the license agreement and, if willing to accept the conditions therein, click on the **Agree** button to proceed.
10. If the machine has shipped with a temporary license, a warning will appear informing that a temporary license has been installed on the machine and for how long the license is valid.
11. Click **OK**.
12. The home screen of the LoadMaster should appear.

The LoadMaster is now fully installed and ready to be used. For further information on how to configure and implement the Virtual LoadMaster, please refer to the LoadMaster documentation which can be found here: <https://kempttechnologies.com/documentation>.

References

Unless otherwise specified, the below documents can be found at
<http://kemptechnologies.com/documentation>

Licensing, Feature Description

Bare Metal Boot Options, Technical Note

Last Updated Date

This document was last updated on 27 July 2023.