

PROGRESS[®] CORTICON[®]

Using update to install a Corticon Studio

Notices

Copyright agreement

© 2013 Progress Software Corporation and/or its subsidiaries or affiliates. All rights reserved.

These materials and all Progress® software products are copyrighted and all rights are reserved by Progress Software Corporation. The information in these materials is subject to change without notice, and Progress Software Corporation assumes no responsibility for any errors that may appear therein. The references in these materials to specific platforms supported are subject to change.

Apama, Business Empowerment, Business Making Progress, Corticon, Corticon (and design), DataDirect (and design), DataDirect Connect, DataDirect Connect64, DataDirect XML Converters, DataDirect XQuery, Empowerment Center, Fathom, Making Software Work Together, OpenEdge, Powered by Progress, PowerTier, Progress, Progress Control Tower, Progress Dynamics, Progress Business Empowerment, Progress Empowerment Center, Progress Empowerment Program, Progress OpenEdge, Progress Profiles, Progress Results, Progress RPM, Progress Software Business Making Progress, Progress Software Developers Network, ProVision, PS Select, RulesCloud, RulesWorld, SequeLink, SpeedScript, Stylus Studio, Technical Empowerment, WebSpeed, Xcalia (and design), and Your Software, Our Technology—Experience the Connection are registered trademarks of Progress Software Corporation or one of its affiliates or subsidiaries in the U.S. and/or other countries. AccelEvent, Apama Dashboard Studio, Apama Event Manager, Apama Event Modeler, Apama Event Store, Apama Risk Firewall, AppsAlive, AppServer, BusinessEdge, Cache-Forward, DataDirect Spy, DataDirect SupportLink, Future Proof, High Performance Integration, OpenAccess, ProDataSet, Progress Arcade, Progress ESP Event Manager, Progress ESP Event Modeler, Progress Event Engine, Progress RFID, Progress Responsive Process Management, Progress Software, PSE Pro, SectorAlliance, SeeThinkAct, SmartBrowser, SmartComponent, SmartDataBrowser, SmartDataObjects, SmartDataView, SmartDialog, SmartFolder, SmartFrame, SmartObjects, SmartPanel, SmartQuery, SmartViewer, SmartWindow, WebClient, and Who Makes Progress are trademarks or service marks of Progress Software Corporation and/or its subsidiaries or affiliates in the U.S. and other countries. Java is a registered trademark of Oracle and/or its affiliates. Any other marks contained herein may be trademarks of their respective owners. Java is a registered trademark of Oracle and/or its affiliates. Any other marks contained herein may be trademarks of their respective owners.

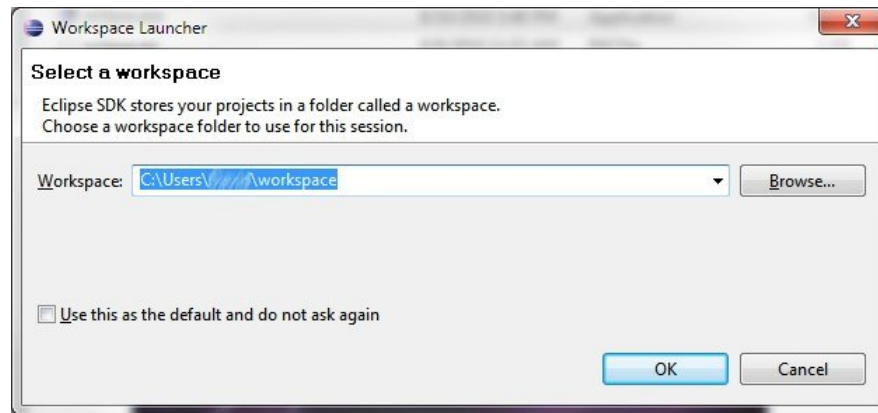
See Table of Contents for location of Third party acknowledgements within this documentation.

Installation instructions

The following procedure describes setting up Java and Eclipse on a target machine where Corticon Studio is added in through its update site packaging.

Note: Version identifiers and dates have been blurred in the following images so that these generic steps can apply to other releases without distracting details.

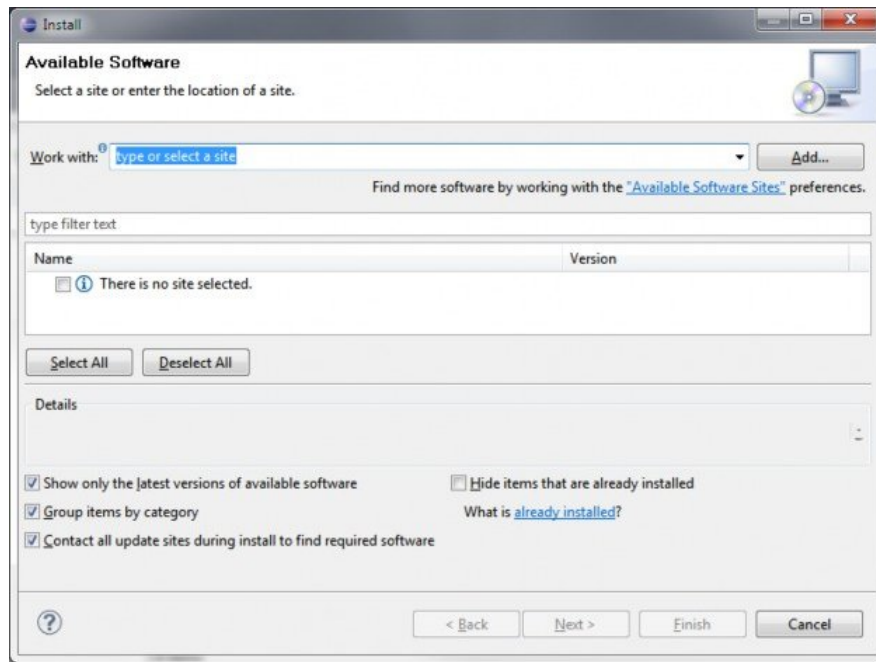
1. You must have an installed Java Development Kit (JDK), 1.6 or later -- not just the Java Runtime Environment (JRE). You can download a supported JDK from the Java website, <http://www.oracle.com/technetwork/java>, and then run its installer.
2. You must have an installed Eclipse in a supported version. If other installed products have not set up Eclipse, you can download a supported version from <http://www.eclipse.org>, and then unpack the download into your preferred Eclipse directory (for example, `c:\eclipse`).
3. Obtain a copy of `Corticon_UpdateSite.zip`. This Update Site Archive contains the Corticon Studio features and plug-ins that you will install into Eclipse.
4. Start Eclipse by double-clicking on `eclipse.exe` in the `c:\eclipse` directory. The system will prompt for a workspace location:



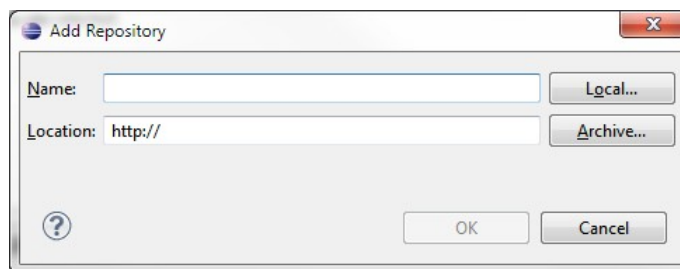
5. Accept the default location or choose a preferred location. Click **OK**. The Eclipse window opens in the **Welcome** view:



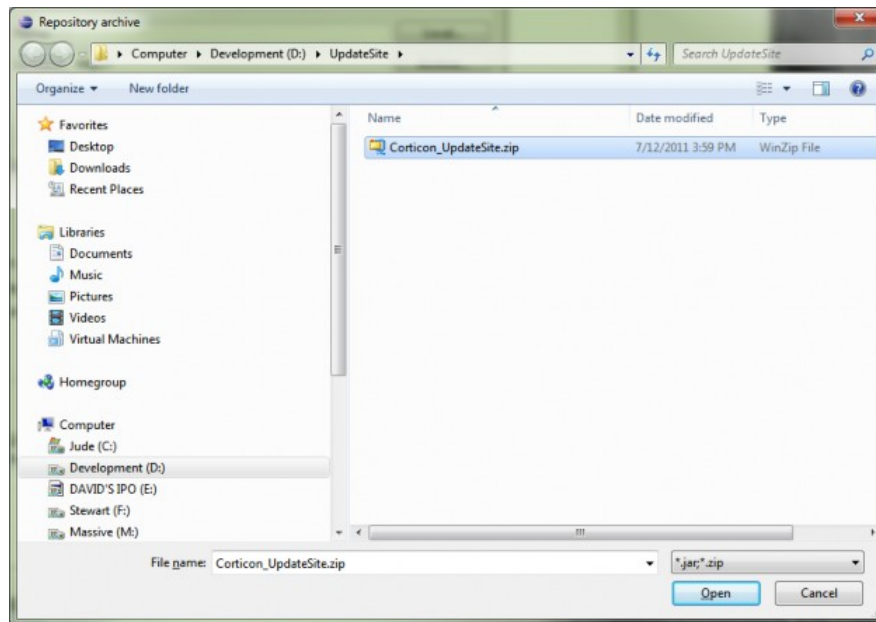
6. Close the **Welcome** view, then select menu item **Help > Install New Software** to open its dialog:



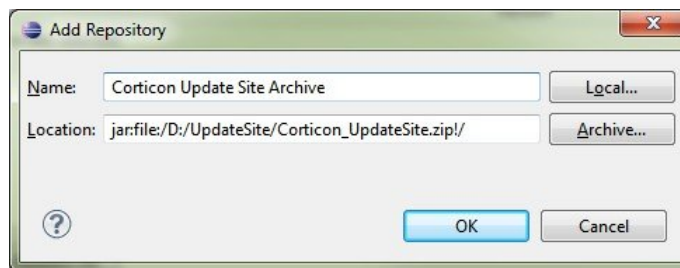
7. Click **Add** to open the **Add Site** dialog box:



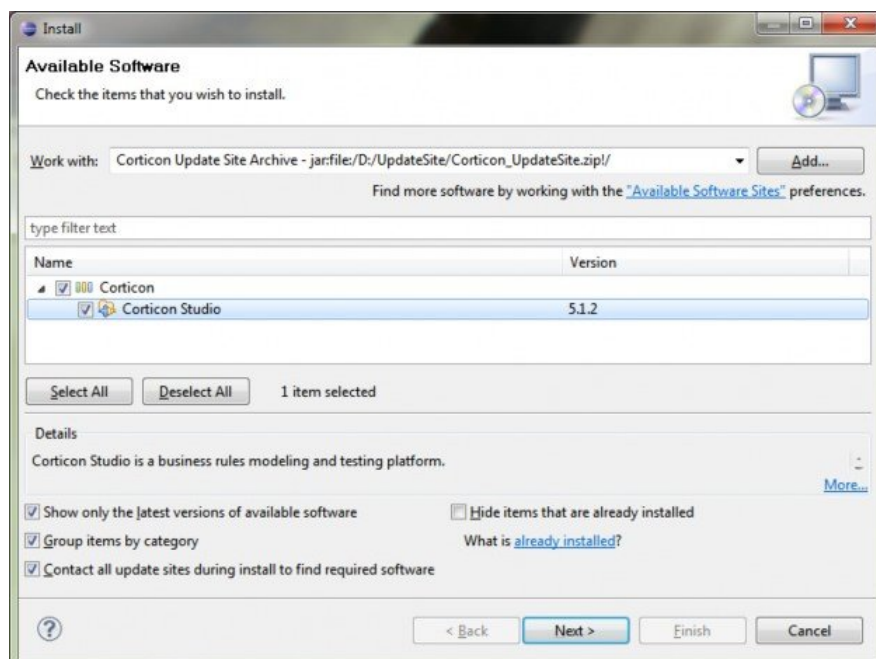
8. Click **Archive** to navigate to the directory that contains your download of Corticon_UpdateSite.zip:



9. Click **Open**, and then assign your new site your preferred name:

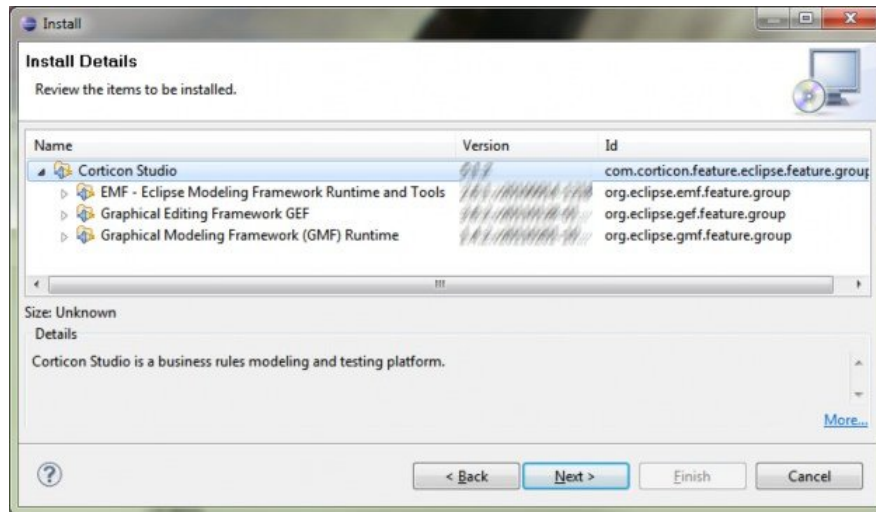


10. Click **OK** to add the site. The dialog then lists Corticon: \

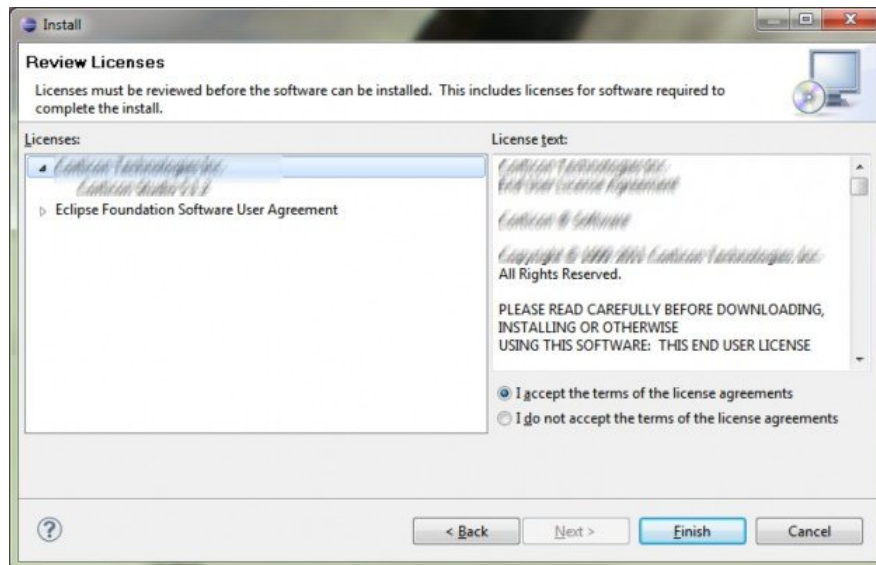


Select **Corticon > Corticon Studio**.

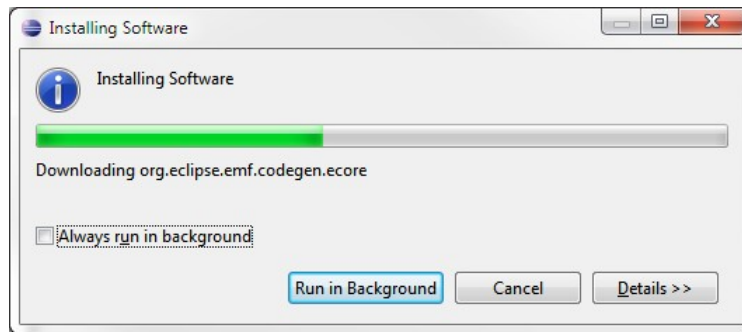
11. Click **Next**. A dependency analysis is performed, and then a list of the features to be installed, including GMF, GEF and EMF:



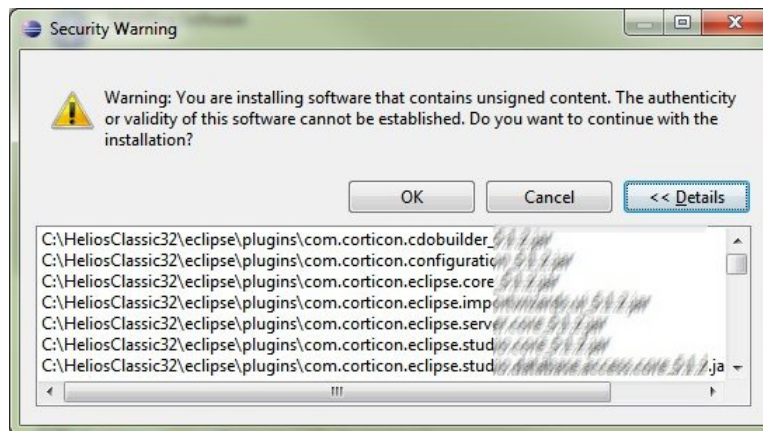
12. Click **Next** to review each of the licenses:



13. Select "I accept the terms of the license agreements", and then click **Finish**. The installer proceeds:

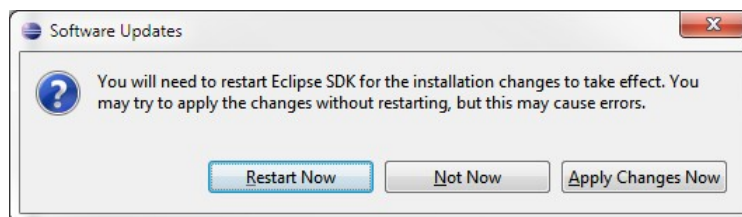


14. You might see Security Warnings:

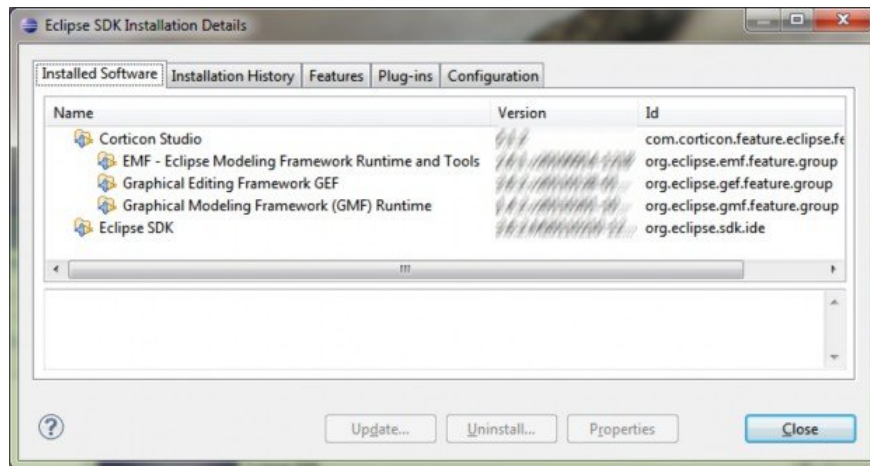


Click **OK** on each warning. The required plug-ins are installed.

15. When installation has completed, click **Restart Now** to do a clean Eclipse restart with the added assets:

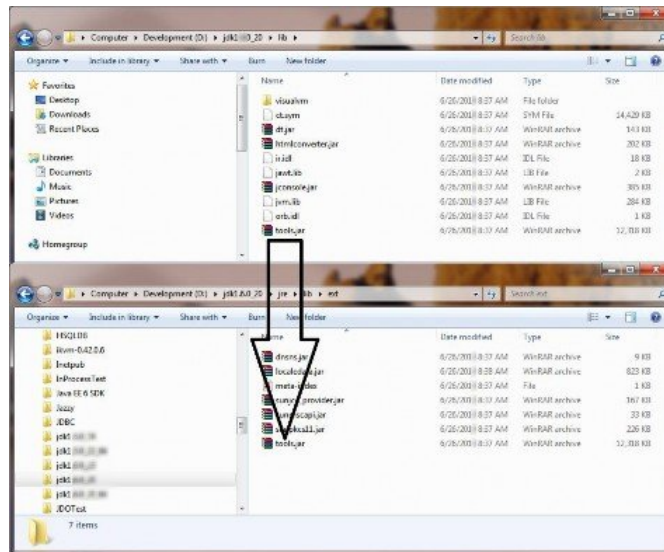


16. Once Eclipse restarts, verify the installation by selecting menu item **Help > About Eclipse SDK**, then click **Installation Details**:

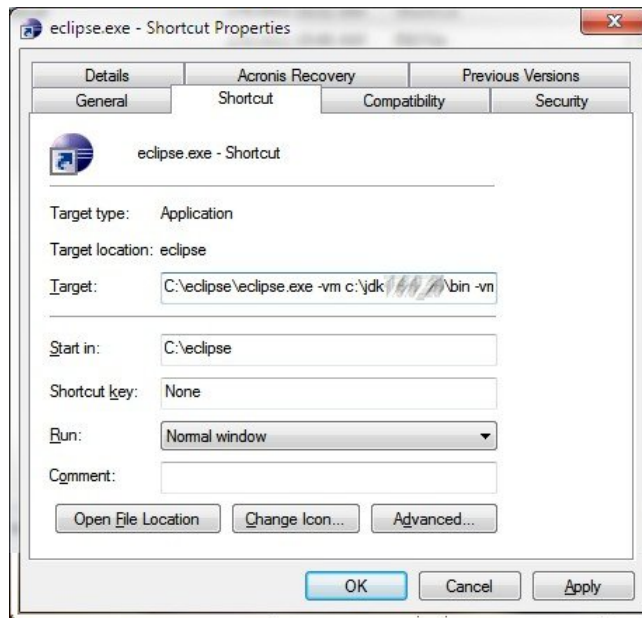


Corticon Studio indicates that it has been successfully installed.

17. In order to compile rule assets and execute tests, you must copy tools.jar from your JDK /lib directory into the /jre/lib/ext as shown:



18. Create a shortcut to place on your desktop for faster launching of Eclipse. Update the **Target** and **Start In** fields as shown:



19. The **Target** field command line parameters should specify the appropriate JDK (typically in the form `-vm c:\jdkn.n.n_nn\bin`). It is a good idea to increase the memory heap settings for optimal performance (try: `-vmargs -Xms256m -Xmx1024m`). Example:
`C:\eclipse\eclipse.exe -vm c:\jdkn.n.n_nn\bin -vmargs -Xms256m -Xmx1024m`
20. Click the shortcut to restart Corticon Studio. When you switch to the **Corticon Designer** perspective, you are ready to get started on Corticon rule modeling.
21. Use the rule modeling tutorials to get you underway smoothly.